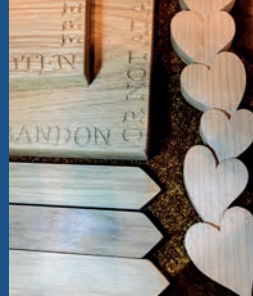
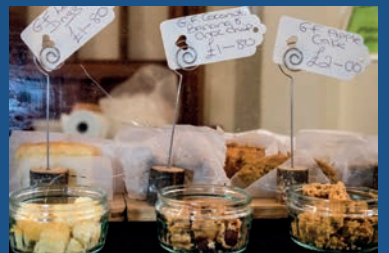


WALLINGFORD LOCAL PRODUCERS MARKET





## C. A. HOLTOM Building Contractor

Established 1988

FOR ALL TYPES OF

Building – Extensions – Plastering – Refurbishment

Alterations – Brickwork – Patios – Drainage

Tel: 01491 651141 / 07990912966

Email: choltom1@sky.com



**Illumin-Nation Ltd**  
5 St Peters Place, St Peters Street  
Wallingford, Oxon OX10 0BG

allan.priddle@btconnect.com  
www.illuminationltd.co.uk 01491 833505

**Fireplace Magic**

### Stoves & Fireplace Sales

- Solid fuel, gas or electric fires
- Installation
- Chimney sweeping
- Woodburner servicing
- Chimney lining
- HETAS registered



Visit our showroom at  
45 Prospect Street  
Caversham RG4 8JB  
Tel: 0118 9463060

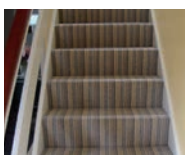
www.fireplacemagic.co.uk

## Masterfloors

Contract and Domestic Flooring Specialists



20 St. Martin's Street  
Wallingford  
Oxon. OX10 0AL  
Tel: 01491 833701  
Free estimates



www.masterfloorswallingford.co.uk



**HOMEBASE**  
PROPERTY

★ WHATEVER YOUR PROPERTY NEEDS ★

**SALES**  
**LETTINGS & MANAGEMENT**

01491 824470 | info@hb-pm.co.uk  
1 Market Place, Wallingford, OX10 0EG

## Bathroom Showroom

**Call Now**

**01491 377 272**

**35 Wallingford Rd, Goring**

Wallingfordtilesandbathrooms.co.uk

**Wallingford**  
— BATHROOMS



**Aspa**  
SCANDINAVIAN INTERIORS

Interior design service | Fabrics | Wallpaper  
10 St Mary's St Wallingford  
www.aspainteriors.co.uk aspa\_interiors



To advertise in Window on Wallingford please contact us on: [info@windowonwallingford.co.uk](mailto:info@windowonwallingford.co.uk)

#### Adverts:

Must be sent in JPEG or PDF formats in their highest quality.

#### Articles:

Supplied in MS word. Please provide any photos or images including logos separately (jpeg files) that you would like in your article.

#### Deadline date to submit: 8th March

**Editor:** Naomi Reddyhoff

[info@windowonwallingford.co.uk](mailto:info@windowonwallingford.co.uk)

**Marketing, Accounts & Administration:** Jessica Dovey

[jess@windowonwallingford.co.uk](mailto:jess@windowonwallingford.co.uk)

**Distribution:** Naomi Reddyhoff

[info@windowonwallingford.co.uk](mailto:info@windowonwallingford.co.uk)

Whilst every effort is made to ensure the accuracy of information printed in the magazine, the Editor and Publisher do not accept any responsibility for the consequences of any errors that may occur. Material published in the Window on Wallingford Magazine is copyright, but normally the Editor will be pleased to grant permission for it to be reproduced, if asked on each occasion. The opinions published in this magazine are not necessarily those of the Editor, Publisher or WoW.

Adverts will continue to run unless cancelled.

## Hello Everyone.

We are cruising on up to Summer now, in April, possibly showers but also Easter to look forward to.

So, I'm going to play the sympathy card now, and really hope some-one steps forward to help.

Back in November I had a heart attack, obviously a major shock at the time and still now. It was quite a bad one. I was in hospital for over a week. I had 1 stent put in and then a few weeks later had another 2 put in. I am at the time of writing this waiting for one more little op. I'll never be quite the same as I was, but I hope to be nearly as.

Now you know I love our WoW Magazine, but with everything that has happened to me I have been struggling a bit with the distribution of it. I need some help. If you like your community magazine and enjoy receiving it each month and reading it and would like to continue to receive it. If you have a few hours to spare each month, a car and a bit of muscle, and would like to earn a little bit of money, not a lot, but at least minimum wage, then take on the WoW Distribution Role. I have been asking for someone to do this for the past few months, I need someone, so am more than happy to pay someone to help me until I get back on me feet again. It's not difficult, you just have to turn up once a month for a couple of days. Please contact me [info@windowonwallingford.co.uk](mailto:info@windowonwallingford.co.uk)

That's all I'm going to say this month, enjoy all the things going on in our wonderful community, which you will find in the wonderful magazine.

Have fun, live life, stay safe!

Naomi xx

**A PLACE TO**

**SURPRISE YOURSELF**

**Unlock your child's potential**

Stagecoach Wallingford  
Singing, dancing and acting classes for 4 - 18 year-olds

[stagecoach.co.uk/wallingford](http://stagecoach.co.uk/wallingford)  
01235 390 810  
Wallingford School, OX10 8HH

Childcare Choices  
WE NOW OFFER  
TAX-FREE  
CHILDCARE!

STAGE COACH

TRAFALGAR ENTERTAINMENT COMPANY

Stagecoach Performing Arts is the trading name of Stagecoach Theatre Arts Limited. Stagecoach Theatre Arts schools are operated under franchise and are independently owned by their Principals. Stagecoach and Creative Courage For Life are registered trademarks of Stagecoach Theatre Arts Limited.

Creative Courage For Life

South Oxfordshire District Council

**LOCAL ELECTIONS 2023**

It's time to choose who represents you

**On Thursday 4 May 2023, everyone aged 18 or over who is eligible will have the chance to vote in the district council election.**

By voting in this election, you will help to choose local councillors to make decisions on important issues, such as where we should focus our efforts locally to help tackle climate change, where and how new housing gets built, how we work to ensure there's enough affordable housing and much more.

Residents in some areas will also be able to vote in parish council elections.

For all you need to know about the local elections, visit our website [southoxon.gov.uk/elections](http://southoxon.gov.uk/elections)

**New for 2023 – to vote at a polling station in this election you must bring photo ID!**

At this election, you will need to bring photo ID with you to be able to vote at a polling station. A wide range of photo ID will be accepted, including passports, driving licences, a disabled parking blue badge and proof of age PASS ID cards.

If you don't have an accepted form of photo ID, you can APPLY NOW for a free voter ID document known as a Voter Authority Certificate.

The deadline to apply for this election is 5pm on Tuesday 25 April.

Visit [electoralcommission.org.uk/voterID](http://electoralcommission.org.uk/voterID) or call 0800 328 0280.





 **Skip Hire  
Caged Tipper  
Waste Management**

☎ 01235 760555

✉ [info@asvogel.co.uk](mailto:info@asvogel.co.uk)  [www.asvogel.co.uk](http://www.asvogel.co.uk)

[ Mention Window on Wallingford when you call ]

 **Electrical  
Plumbing  
Fire and Security**

**Call: 01491 835875**

THE POSITIVE OUTCOMES GROUP Email - [reception@groupga.co.uk](mailto:reception@groupga.co.uk)  
Unit H Moses Winter Way, Wallingford, OX10 9FE

 **WATER'S EDGE**  
PLUMBING & HEATING

**Plumbing and Heating Services**

Based in Benson, fully qualified and insured.  
Contact our friendly office team for a quick response to your requirements or to arrange your **FREE QUOTE**

**07946 165 277**

[www.watersedgeuk.co.uk](http://www.watersedgeuk.co.uk) • [contactus@watersedgeuk.co.uk](mailto:contactus@watersedgeuk.co.uk)

- General Plumbing
- Leak Repair
- Central Heating
- Boiler Repairs
- Boiler Instructions
- Shower Installations
- Powerflushing
- Gas Safety Services
- Underfloor Heating
- Estate Agent Services

 [www.watersedgeuk.co.uk](http://www.watersedgeuk.co.uk) 

# We're your computer support store in Wallingford.

## PC TECHNICIANS

**WINDOWS | APPLE | ANDROID**

Unit B, The Croft, Whiteley Road,  
Wallingford, OX10 9RG

Open Mon-Fri 8:30am-5:30pm

**Free  
Parking**

## REPAIRS & INSTALLATION

PC Technicians offer fixed price services in-store, on-site, and over the Internet via remote access. We cover everything from virus removal to data transfer.

## CLICK & COLLECT

100's of products handpicked by us available for sameday click & collect. Everything from cables, mice, keyboards and laptop bags to hard drives, ink and toner.

**Tel: 01491 825449**  
[www.thepctechnicians.co.uk](http://www.thepctechnicians.co.uk)

## Mayor's Message

This will be my last piece for Window on Wallingford for some while, at least it will be as me, writing as the Mayor of Wallingford. By the next issue a new holder of this Office will have been selected by my council colleagues and will join a long list of Mayor's going back all the way to the year 1250. It has been a huge honour to serve this town that I love for the last couple of years but now it is time for a changing of the Mayoral guard so to speak.

At our next meeting a new Mayor will be selected who will be asked, by their colleagues, to serve from May onwards, as Chairman and Mayor for the year ahead. Why not come along and see who it might be.

However, this year will not be as straight forward as the last three. Every four years, in early May, communities up and down the country are asked to elect a number of their citizens to take a place on the local Town or Parish council and those Councillors are then asked to select a new Mayor. So if the Mayoral candidate doesn't make it, Councillors have to choose again. Being on the town council can be exciting stuff.

**So, election time for Town/Parish councils and district council is on Thursday 4 May 2023. We of course hope to see some of the old faces return, especially whichever Councillor is selected to be the next Mayor.**

Help us to shape the town we all live in by voting.

**Cllr Marcus Harris, Mayor of Wallingford**



## Easter Trail & Coronation Events



**This year there'll be an Easter egg hunt in Castle Gardens on Thursday 6th April from 10am – 1pm, weather permitting. Suggested donation is £1 a child, which includes a prize, with all funds going towards restoring the Town Hall.**

**The King's Coronation weekend is fast approaching, and the parks team are planting white, red and blue flowers around the town to celebrate this summer. Join us on Saturday 6th May to watch the coronation with the community in the Castle Gardens, with stalls and children's crafts to enjoy. On Sunday 7th, there'll be an afternoon of live music in the Castle Gardens, and keep an eye out for volunteering opportunities and events planned on Monday 8th as part of the Big Help Out.**



## MANY HAPPY RETURNS!

Portcullis Tennis Club members gathered today at Hithercroft sports park in Wallingford, to celebrate the 90th birthday of the Club's longest-serving member. Dorchester resident Roy Holliday, has been playing tennis since his teens, rising to county level.

He joined Portcullis around 1990, was the captain of the men's team for many years and still plays twice a week at club sessions on Wednesdays and Saturdays.

Members joined in wishing him many more great returns (and tramline winners!), toasting him with Bucks Fizz and cake. Roy's birthday was Friday 24 February, and he is hosted a family party at the weekend.





## Winterbrook Garden Services Ltd

Garden Design, Construction & Maintenance  
Fencing  
Patios  
Full Pruning Service

Tel: 01491 838189  
Mobile: 0775 36 36 333  
winterbrookgs@gmail.com



## Winterbrook Garden Nurseries

High Road, Brightwell-cum-Sotwell, OX10 0PS

Independent plant nursery  
specialising in herbaceous  
perennials & garden curios

www.winterbrookgardennurseries.com  
f @winterbrookgardennurseries

## G.R. Galliford

Graham  
07762 650 809  
01491 824583



Mini Digger  
with Operator  
Block Paving  
Driveways  
Patios  
Fencing  
Drop Kerbs  
Groundwork

g.galliford@btinternet.com

## Benson Angling Centre

Your Friendly Local Angling Centre

Unit 3, Benson Waterfront,  
Benson Wallingford OX10 6SJ

Tel: 01491 838288  
Email: dibby1949@yahoo.co.uk



Stockists of Drennan E.S.P. Dynamite Baits, Sticky Baits,  
Baitech, Dead Baits and Live Baits Available. We buy and  
sell all used angling items

SHOE  
REPAIRS

ENGRAVING

KEY  
CUTTING



## FEET FIRST

21 St. Mary's Street, Wallingford  
Contact Gary on: 01491 825224



WATCHSTRAPS  
BATTERIES

STITCHING  
REPAIRS

TRAVEL GOODS  
LUGGAGE

## A.G.CURTAIN DESIGN LTD

www.agcurtaindesign.com



Made Exclusively For Your Home  
Bespoke Curtains & Soft Furnishings

- 15 years serving clients in South Oxfordshire
- 1,000's of design lead fabrics to choose from
- Expert making and fitting service
- Curtains & Soft Furnishings
- Poles - tracks - finials & tie backs
- Cushions - lamp shades & headboards
- Made to order promptly & efficiently
- Free measure & quotation service

BEAUTIFUL  
CURTAINS, BLINDS  
&  
SOFT FURNISHINGS  
01491 834238



Blinds & Shutters  
Modern & Contemporary

- Wooden & Venetian
- Roller & Vertical
- Perfect fit & Faux Wood
- Made to fit your windows
- Inside & Outside recess fit
- Manual & Remote controls
- For all rooms in your home or business

VISIT OUR RETAIL STORE AT 3 ST, PETERS PLACE, WALLINGFORD, OXON. OX10 0BG



## Wallingford Tyres & Exhausts



**FRIENDLY, PROFESSIONAL SERVICE  
AT COMPETITIVE RATES**

PHONE: (01491) 824145 FOR A QUOTE  
or call in at: AYRES YARD, STATION ROAD,  
WALLINGFORD, OXON.  
OR BY APPOINTMENT OUTSIDE WORKING HOURS  
**Mon.-Fri. 8.30 a.m.-5.30 p.m. Sat. 8.30 a.m.-1.00 p.m.**  
(Just past the Esso Garage on the way to Didcot)



Funerals / Weddings / call or click and collect / national orders

1 Ayres Yard, Station Road, Wallingford, Oxon OX10 0JZ  
T: 01491 838005 E: wallingfordflowers@gmail.com

## HOWARD CHADWICK FUNERAL SERVICE

A caring family owned and managed Funeral Service

- Dedicated Private Chapel of Rest •
- Golden Charter Pre-Paid Funeral Plans •
- Specialists in Memorial Stones and Designs •

33 Benson Lane, Crowmarsh Gifford,  
Wallingford OX10 8ED  
Tel: 01491 825222



www.chadwicksfuneralservice.co.uk

Golden Charter  
Funeral Plans

# WHAT'S ON

## Brightwell Art Club

**Brightwell Art Club meet on Saturday mornings (10 to 12, term time) at the Village Hall.**

They are a friendly group of people who welcome beginners as well as more experienced painters, and usually have a tutor with them helping on a differing theme each week. You could pop in and meet the group on a Saturday morning, coffee is about 11am. For further information, email: [izdarby@icloud.com](mailto:izdarby@icloud.com)

The forthcoming programme is:

**25th March - Portrait from a live model (tutor: Pete Annells)**

**1st April - Mixed media (tutor: Janet Lueck)**

**then, 22nd April - next term starts**

Isabella Darby

## Henley and District Stamp Club

Snowdrops have been out, and we are changing the clocks to enjoy more daylight. At the Henley stamp club is a friendly group and we would be delighted to see new visitors or members. If you are interested in fact concerning stamps or postal history, why not come along and find out how you can promote your interest.

To learn more about stamps and postal history why not visit us at Bix one Wednesday evening? You can then meet people who find postal history and the story of stamps fascinating too.

**Wednesday 12th. April** – The evening when members will display 'Cinderellas and Revenues'.

**Wednesday 26th. April** – We have a guest speaker, Chris Folland to give a talk about the 'Pigeon Post of New Zealand'.

Meetings are held on the 2nd and 4th Wednesday of the month in Bix Village Hall at 7.30 p.m.

Visitors and new members are very welcome.

Further details can be obtained by phoning Brian on 01491 681739 or on our website: -

[www.henleyphilatelic.org.uk](http://www.henleyphilatelic.org.uk)

## Riverside Repair Café

**Saturday 15th April, 10am-1pm**

If you have something broken or needing repair, and would like help learning how to repair it\*, you are welcome to bring it to the third Riverside Repair Café, Saturday 15th April, 10am-1pm, in the garden of Eastgate House, 1 High Street, Wallingford. Access is via the Green Door opposite the Boat House pub, just next to Wallingford Bridge. Volunteer repairers will be there rain or shine to help you with your repairs: Woodwork, Sewing, Sharpening, Bicycles, Small Electricals, China, etc. Light refreshments available. The garden allows plenty of space for social distancing and gazebos let us get on with the repairs rain or shine.

<https://www.facebook.com/groups/RiversideRepairCafe>

\* Have something fixed that would otherwise go to landfill and learn a new skill at the same time.

Please note all repairers/teachers are volunteers, so all repairs are free, but with no guarantees of success

## Wallingford Allotments and Gardens Society (WAGS)

Our Summer Bedding Plant sale will take place on **Saturday May 13th 9.30am-11.30am at Centre 70**. On sale we will also have vegetable plants and perennials donated by local supporters – come along and stock up! We welcome your plant donations on the **13th May** with all proceeds helping to fund the running costs of the store and the annual show.

**The WAGS Garden Store is open every Saturday 11am-12 noon in Centre 70** and car parking is available. The store sells seed potatoes and onion sets, peat-free composts, fertilisers and nutrients, weed and bug control and MORE! We are closed for August and also November-January.

**Note, we will be closed for the King's Coronation on Saturday 6th May.**

WAGS is run by volunteers and is for the benefit of all local gardeners - both home gardeners and allotment holders with membership frozen at £4 for the year. We also have the Dobies Seed and Plant catalogue available with a members discount code on seed orders. Our news and updates are posted on Facebook [www.facebook.com/WallingfordAGS/](https://www.facebook.com/WallingfordAGS/) or get in touch by calling our Chairman Sandra on Tel **01491 836527**.

If you love horticulture, come along to the store on a **Saturday 11am-12noon** and join us. Happy Growing!

Jayne Page on behalf of the WAGS Committee

## Wallingford & District Art Club

Wallingford & District Art club are delighted to welcome Susan Gray for this month's live demonstration on **Tuesday April 18th, 7.30pm** at Centre 70. Susan is a professional artist and tutor and will be showing us her approach to painting '**Seascapes in acrylics**'. She has always been fascinated by the sea and the surrounding area and often works in situ or from sketches made on location to work up to larger paintings back in the studio. Although her background is in oils, her preferred medium is now acrylics which she finds more suited to capturing her exciting and dynamic seascapes. The demo is free for club members and £3 for visitors. If you would like any further information about this friendly art club or are interested in becoming a member please email [admin@wallingfordartclub.org.uk](mailto:admin@wallingfordartclub.org.uk) or check out our website at

[www.wallingfordartclub.org.uk](http://www.wallingfordartclub.org.uk)

# WHAT'S ON

## Wallingford Country Market

WALLINGFORD COUNTRY MARKET – have YOU visited us yet? Open each **Friday morning in St. Mary-le-More Church, (situated just behind the Town Hall), between 9.30 a.m. - 12 noon.** Fresh delicious Home-baked Cakes and Savouries, Local Honey and Seasonal Preserves, Plants, Flowering Bulbs and Hand-crafted items available each week.

**Our Easter Market will take place on Maundy Thursday, 6th April**, which replaces our usual Friday market, when Easter bakes and treats will be available. Orders taken for most items we sell. New producers always welcome – if interested, please visit us one Friday morning and speak with our Market Manager, Alison Broadbridge, or phone her on **01491-681596**

## Wallingford Methodist Church's jumble sale.

Grab a bargain at Wallingford Methodist Church's jumble sale.

**Doors open at 2 pm on Saturday April 22nd** for clothes, accessories, toys, games, household items and plenty of bric a brac. Refreshments will also be available at the church centre in St Leonard's Square.

## Wallingford Photographic Club

**Wallingford Photographic Club continues into spring with a programme of events and talks on Thursdays at 7:30pm.**

From April we meet in person, with the 6th taking us on a journey around Namibia (with Eddy and Pam Lane). We then get more interactive on 13th with our annual combined portfolio competition, where members arrange four photos on a theme, and architecture competition. We will have a members' evening on 20th (guests welcome though). The month closes with Mark and Judy Buckley-Sharp's Journey in Printing. The season closes in May with our End of Season Competition on 4th and AGM on 11th. Then we're excited about meeting regularly in person again at Crowmarsh Pavilion from September and look forward to announcing our plans and programme for Autumn. We are also pleased to announce that we will be holding an exhibition in Wallingford in early September over Bunkfest weekend! Watch this space...

# WHATS ON CINEMA

Saturday, 1st April, 7:30pm	Pearl (15)
Sunday, 2nd April, 7:30pm	Allelujah (12A)
Monday, 3rd April, 7:30pm	Allelujah (12A)
Tuesday, 4th April, 7:30pm	Allelujah (12A)
Wednesday, 5th April, 2:30pm	Allelujah (12A)
Wednesday, 5th April, 7:30pm	Everything, Everywhere at once (15)
Thursday, 6th April, 7:30pm	Everything, Everywhere at once (15)
Friday, 7th April, 7:30pm	My Sailor, My Love
Saturday, 8th April, 2:30pm	Elvis (12A)
Saturday, 8th April, 7:30pm	Elvis (12A)
Sunday, 9th April, 7:30pm	My Sailor, My Love
Monday, 10th April, 7:30pm	Cassatt: Painting the Modern Woman (U)
Tuesday, 11th April, 7:30pm	Cassatt: Painting the Modern Woman (U)
Wednesday, 12th April, 2:30pm	Dreambuilders (U)
Friday, 14th April, 7:30pm	80 for Brady (PG)
Saturday, 15th April, 2:30pm	80 for Brady (PG)
Saturday, 15th April, 7:30pm	80 for Brady (PG)
Sunday, 16th April, 7:30pm	80 for Brady (PG)
Monday, 17th April, 7:30pm	God's Creatures (15)
Tuesday, 18th April, 7:30pm	Vermeer, the Greatest Exhibition
Wednesday, 19th April, 2:30pm	Vermeer, the Greatest Exhibition
Wednesday, 19th April, 7:30pm	God's Creatures (15)
Friday, 21st April, 7:30pm	Dungeons and Dragons: Honor Amongst Thieves
Sunday, 23rd April, 7:30pm	Dungeons and Dragons: Honor Amongst Thieves
Monday, 24th April, 7:30pm	Dungeons and Dragons: Honor Amongst Thieves
Tuesday, 25th April, 7:30pm	Dungeons and Dragons: Honor Amongst Thieves
Wednesday, 26th April, 7:30pm	Dungeons and Dragons: Honor Amongst Thieves



## LIVE ON STAGE

**Saturday, 22nd April, 7:45pm**  
**Abba Sensation Tribute Band**

**Saturday, 29th April, 7:45pm**  
**A Room of One's Own**

**Tuesday, 24th May to Saturday, 27th May,**  
**7:45pm**  
**Sheila's Island**  
**performed by the Sinodun Players**

A comedy in thick fog. Four women from different parts of the country are brought together for probably one of the worst team building exercises ever. They are stranded on a small island in the Lake District after one incident and the elected team captain struggles to keep her team morale up as the group face a variety of issues such as hunger, cold weather, and a possible killer, as well as their own interpersonal issues.

**Tickets : £10, £9 (Tuesday night)**



## Citizens Advice recommends Internet-based financial calculators

As you read these paragraphs, multitudes of people in this country are taking stock of their financial positions and finding plenty of reasons for feeling glum. The near future looks bleak with higher and higher food bills, galloping gas and electricity charges, zooming mortgages. But worse comes if we give way to our mood and allow reasonable concerns to be clouded in uncontrollable fears, so it is important to be calm and objective about our situations. In this respect the "calculator" tool is a big help: it tells us very simply what our financial position is, giving an objective diagnosis, without judging us.

**citizens  
advice**

Citizens Advice recommends two calculators in particular. The first is a benefits calculator on the trusted Turn2us website. You might not have thought your finances were so bad that you needed to claim, but you could be eligible to receive benefits and you only need to answer a few simple questions. Go to <https://benefits-calculator.turn2us.org.uk> and find out. The second is an energy calculator on the Citizens Advice website which will tell you the cost of using various electrical appliances. For this calculator you need to have some data ready – for instance, how much energy you are consuming and the unit price you pay. Visit <https://www.citizensadvice.org.uk> and search "consumer energy".

Another calculator that you might be interested in is one that gives you your own personal inflation rate – i.e. the effect of inflation on your own spending. This gives you an objective percentage figure which you can use to establish whether your bank balance is going to hover above or below zero. The calculator is on the Office for National Statistics website at <https://www.ons.gov.uk>

**Whatever your problem is, volunteers at Citizens Advice are available to help. Call Adviceline on 0808 278 7907. There is much more information on <https://www.citizensadvice.org.uk>**

## Thameside (Wallingford) u3a

We have come to the end of our annual party season---Celebration lunch in January, New Members Tea in February and Volunteers cheese and wine evening last month. All were thoroughly enjoyable in their different ways and hopefully will have given pleasure and information to those involved.



Our first outing of the year was to the Wallace Collection and then Chelsea Hospital where we had a most interesting tour. We look forward to going to Highgrove (aka Downton Abbey) this month, and in May hope to go to Broadway and Gloucester Railway. The planned holiday to Istanbul was found to be prohibitively expensive, so after a new vote we have decided on Salzburg as our new destination, sometime in September.

Keeping both learning and amusement in mind our talk in March featured the "Wicked Wit of Winston Churchill" mixing history and humour. This month the talk will be more local, "The World of Wittenham Clumps" and in May, Green Matthews will entertain us again with their many musical talents.

This month there will be NO coffee morning as the first Friday is also Good Friday; the next one will be on **Friday 5 May from 10.30am to noon at the Methodist Church**. Speaker meetings are on the 3rd Wednesday at St. Mary-Le-More Church at 2pm.

There is more information and joining links on our website at: [www.wallingfordu3a.org](http://www.wallingfordu3a.org)

Happy Easter to all.

Neil Kelly, u3a committee

## Wallingford Accessible Boat Club releases its Spring Newsletter

**If you like boats and boating or helping others to do so, this is for You.** Wallingford Accessible Boat Club (WABC) has released its Spring Newsletter. It contains a number of interesting features as well as news items about the Club.

WABC aims to enable disabled and less mobile people from our area and adjoining districts to get out and about on our lovely River Thames on our Wheelyboat, WOW-one, a purpose built flat-bottomed craft with a drop-down bow that caters for both ambulant and wheelchair users alike.

It is important we 'spread the word' to enable as many disabled and less mobile people in our community access to the wonders of boating on our lovely River Thames.

John Jenkins MBE  
Trustee  
Wallingford Accessible Boat Club  
Mob: **07976 297835**  
Email: [john.jenkins@wabc.org.uk](mailto:john.jenkins@wabc.org.uk)  
[www.wabc.org.uk](http://www.wabc.org.uk)

# Have you a Lasting Power of Attorney?

It's not just for those getting older, anyone can have a stroke, accident, dementia... and lose mental capacity



## HELP-PEN-HAND

### Who will speak for you?

Learn about LPAs for just £35.

Contact me and I will help you. Val Wolsey

01491 836820 | HelpPenHand@gmail.com



**St Mary's & St Leonard's  
Wallingford**  
*open to God, open to all*

YouTube



**8am St Leonard** – Holy Communion

**10am St Mary-le-More** – Parish Communion (live-streamed)  
with Children's Church or Family Service

**6.30pm St Leonard** – Evensong

**www.marylemore.co.uk**

Email: rector@marylemore.co.uk Tel: 07869 167174

# Shaun Guard TV & WIFI SERVICES

- **Aerials** - supplied, repaired & poor reception solved
- **Satellite** - Sky Q dish upgrades, discreet dish installation also foreign TV
- **Internet** - blackspots cured, data cables to your TVs / computer
- **TVs** - hung on your wall or set up & tuned

 **OXFORD AERIALS**

**Call Wallingford**  
**01491 833282**  
**www.oxfordaerials.co.uk**



**ST MARY'S  
DENTAL PRACTICE**

**Dr. A. Ratti BDS (Hons) Kings College London**

New patients welcome

Affordable quality private dental service from a caring team

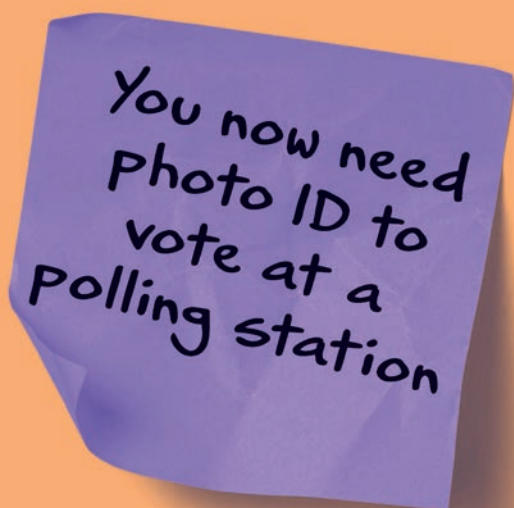
Maintenance plan available

Call for more information

**01491 825252**

**www.stmarysdental.co.uk**

The  
**Electoral  
Commission**



No ID? You can apply for free voter ID

Find out more at

**electoralcommission.org.uk/voterID**

or call 0800 328 0280



 **Oxfordshire  
ageUK**

**0345 450 1276**

We enable older people in Oxfordshire to live life to the full.  
Whether you're on a quest to live well into old age or  
if you're going through tough times, we're here to help you.

## Our Services

Information and advice  
Dementia support  
Carer support  
Physical activity classes  
Telephone befriending  
Digital support  
Home support  
Homeshare  
Bereavement support groups  
Foot care  
Scams prevention advice  
Hospital discharge support  
Social activities and clubs  
LGBTQ+ groups  
Book groups

**contactus@ageukoxfordshire.org.uk**  
**www.ageuk.org.uk/oxfordshire**



Age UK Oxfordshire is an independent local charity. Registered charity (No. 1091529) and company limited by guarantee (No. 4328143), registered in England and Wales. Registered office: 9 Napier Court, Barton Lane, Abingdon, OX14 3YT.



## A message from Wallingford Food Bank

Wallingford food bank benefits from a number of volunteers from your village as well as support from a number of residents and organisations. Thank you all very much. Wallingford food bank regularly helps those in need in your village.

We wanted to let you know about a way you can support the food bank even more.

We are now using Bank the Food, an app that will 'ping' you a notification as you arrive at a donation point, to give you an up-to-date list of urgent needs – so you can be sure you are donating exactly what is needed. If you have a smart phone, you can download the free app from the 'App store' if you have an iPhone or from 'Google Play' if you have an Android phone. Then register on it and 'follow' our food bank (you can easily find us if you enter OX10 in postcode search). You will then find a choice of donation points to follow. Currently they are in the Co-ops in Benson and Woodcote and Waitrose in Wallingford.

It is already a great help to us that people are using the app. This means we can help more people, local to you, that are in need. If you need food, please visit our website to see how we can help. [www.wallingfordfoodbank.org.uk](http://www.wallingfordfoodbank.org.uk)

Thank you.

Alice Penney  
Manager, Wallingford Food Bank



## Easter Treats at The Wallingford Bookshop...

April may be known for springtime showers, but new books are pouring into the bookshop this month.

### FICTION

For crime lovers, **Killing Jericho** has been described as 'Agatha Christie meets Se7en' and is a blistering adult fiction debut by William Hussey, who brought us *The Outrage*. Historical / literary fiction devotees will love **The Chosen by Elizabeth Lowry**, a 'Times Best Historical Fiction Book of the Year', which comes into paperback this month. **Unsettled Ground by Claire Fuller** was a best seller for us last year, and her new dystopian novel, **The Memory of Animals** is perfect for fans of Ishiguro's *Never Let Me Go*. Finally, the wonderful **Curtis Sittenfeld's Romantic Comedy**, and **Holly Smale's** adult fiction debut, **The Cassandra Complex**, are both perfect for those who are looking for laughter, wit and wisdom.

### NON FICTION

Non-fiction fans are also in for a treat this month! **Frieda Hughes's George: A Magpie Memoir** is a tale of love, obsession and feathers, for those who enjoyed last year's **Fledgling by Hannah Bourne Taylor**. **In Time Come**, the respected poet and influential cultural activist, **Linton Kwesi-Johnson**, selects some of his most powerful non-fiction essays, articles and obituaries, which draw on his own Jamaican roots, and on Caribbean history and its influence on black British culture. Finally, after the huge success of *Prisoners of Geography* and *The Power of Geography*, **Tim Marshall** is back with **The Future of Geography**, a must read for anyone interested in the Space Race.

### DATES FOR YOUR DIARY:

**20th April – Barrington Stoke Event for Teachers, Librarians and SEND co-ordinators**

**24th April – Book Club with Anne Youngson – A Complicated Matter**

**17th June – Jodi Taylor Signing – The Good, The Bad and The History**

**26th June – Book Club with Olivia Kiernan – The End of Us**

**Wallingford Bookshop, 10c St Martin's St, Wallingford OX10 0AL**





# Sunshine Painting & Decorating

**LANCE THOMPSON**  
FRIENDLY RELIABLE SERVICE

*For All Your Decorating Needs • Call For A Free Estimate*  
**07780 221950**

lance.sunshine@btopenworld.com • www.sunshinedecorating.co.uk  
@sunshinedecorator @sunshine\_pd

FULLY INSURED | CHOLSEY, OXON

# LOVE HAIR? LOVE FASHION? BE A HAIRDRESSER

**Apprenticeships available now!**



Call Forrester's: **01491 837 523**  
Drop in: **25 High Street, Wallingford**

**Forrester's4hair.com**



**Apprenticeships**

# Tom Cottrell Landscapes

EST 1974 Family Run Business

**Telephone: 01491 836974**

<b>All tree aspects - Dave Cottrell</b> Felling • Reducing • Reshaping • Thinning, Removal • Pollarding • Shrub & Tree Pruning • Dead Wood • Removal Hedge Management • Stump Grinding	<b>Garden &amp; Landscaping Services</b> Turfing • Hedge & Grass Cutting • Planting • Fencing • Patios • General Garden Maintenance • Garden Renovation & Construction • Woodchip Mulch • Seasoned Logs & Kindling Wood
-------------------------------------------------------------------------------------------------------------------------------------------------------------------------------------------------------	-------------------------------------------------------------------------------------------------------------------------------------------------------------------------------------------------------------------------------------------

**www.tomcottrelllandscapes.com**  
**Email: tomcottrelllandscapes@gmail.com**  
Orchard Cottage, High Road, Brightwell-cum-Sotwell, Nr Wallingford, Oxon OX10 0PS

# REFLEXOLOGY thrive & WELLBEING

**Clinical hand & foot reflexology**

**Reflexology can:**

- help you relax
- reduce stress and tension
- improve your sleep and mood

**ALSO OFFERING:**  
Wellbeing in the workplace  
Sleep consultancy  
Support for menopause

**www.thrive-reflexology.co.uk**  
**thrivereflexology@gmail.com**

# Paddocks pre-School

Paddocks Pre-school  
Paddock Road  
Wallingford  
OX10 9LT  
[www.paddockspreschool.com](http://www.paddockspreschool.com)

**A friendly preschool environment offering a wide range:**

- Flexible sessions for 2 – 5 year olds
- Universal 15 hours funding for 2, 3 & 4 year olds
- Extended 30 hours funding for 3 & 4 year olds
- Large Garden & Forest School
- After school care available
- Holiday play schemes for 2-8 year olds

**Ofsted Outstanding Provider**

For more information or to arrange a visit, please call **01491 825333** Charity Number: 1001964  
or email [info@paddockspreschool.com](mailto:info@paddockspreschool.com)

# Wallingford Methodist Church

St Leonard's Square, OX10 8AS

**Sunday Worship 10.30 am**  
**EVERYONE WELCOME**

The resumption of other activities is planned  
Please check the notice boards outside the church for details  
or the website **www.wallingfordmethodistchurch.org.uk**  
Contact our minister, Rev. Jocelyn Bennett, with any enquiries.

**Tel 01235 813242 email [jocelynbennett@methodist.org.uk](mailto:jocelynbennett@methodist.org.uk)**



# JIM PINK

Service Centre and Car Sales  
15 Wood Street, Wallingford OX10 0AY

**HYBRID/ELECTRIC SPECIALISTS**

- Free Battery Check
- Free Light Check
- Free Antifreeze Check
- Annual Service
- Batteries from £49.95 + VAT Fitted Free
- MOT testing
- 4 Wheel Laser Tracking
- Air Con Servicing (Inc. R1234YF type)
- **Air Conditioning Regas from £69 inc VAT**
- Diagnostics
- Tyres fitted at very competitive prices
- **We now have a fully qualified technician to work on Hybrid/Electric Cars**

**FREE COLLECTION or we can provide a COURTESY CAR**  
Call **01491 836017 • 01491 836022 • 07342 630396**  
email [info@jimpink.co.uk](mailto:info@jimpink.co.uk) **www.jimpink.co.uk**

customer care without compromise

# CHEQUERS GARAGE

Fullers Road, Aston Tirrold, Oxfordshire OX11 9EN  
[info@chequers-garagedidcot.co.uk](mailto:info@chequers-garagedidcot.co.uk)  
[www.chequers-garagedidcot.co.uk](http://www.chequers-garagedidcot.co.uk)

At Chequers Garage we look after our customers as well as their cars. That's why we have courtesy cars, offer local collection and delivery, explain your invoice in plain English and every car is washed before it is returned - not only will your car run well, it will look great too!

- MOT**
- SERVICE**
- TYRES**
- AIR CON**

**the Good Garage Scheme**

**Call today on 01235 850347**

# WALLINGFORD CHRISTIAN ASSEMBLY

BRINGS YOU: A MESSAGE OF HOPE FROM THE BIBLE

**Join us online**  
Every Sunday @ 17:00  
20 min message

*We invite you to hear a short message from the Bible, available from the comfort of your own home.*

**To watch live:**  
Zoom ID: 491 229 776 Passcode: 316

Not able to join on a Sunday catch up on demand  
[@Wallingford Christian Assembly](https://www.youtube.com/channel/UCWallingfordChristianAssembly)

[@GodsGoodNews](https://www.facebook.com/GodsGoodNews)  
(God's Good News for South Oxfordshire)  
[www.wallingfordchristianassembly.org.uk](http://www.wallingfordchristianassembly.org.uk)

*Faith cometh by hearing and hearing by the Word of God (Romans 10:17, the Bible)*





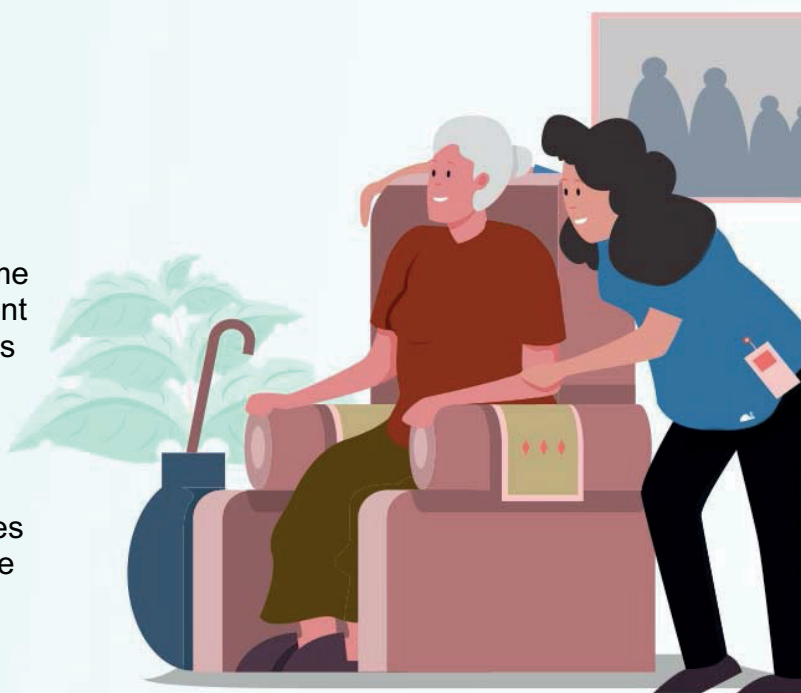
# Q1Care

## Do you, or a loved one, require support at home?

Q1Care prides itself in offering 'high quality' home care to enable people to stay safe and independent at home. We offer as much, or as little, support as required. From *companionship, practical help*, through to *complex needs*.

## Work with us?

Become a valued employee, join a team that cares and make a difference to your community. Please email: [heloise.slater@q1care.co.uk](mailto:heloise.slater@q1care.co.uk) for more information.



## Home Care across West Berkshire & South Oxfordshire

Email us: [info@q1care.co.uk](mailto:info@q1care.co.uk) / [heloise.slater@q1care.co.uk](mailto:heloise.slater@q1care.co.uk)

Call us: 0118 932 3865

Visit us: [www.q1care.co.uk](http://www.q1care.co.uk)



## CARE DRY CLEANERS

10B St. Martins Street, Wallingford OX10 0AL

Tel: 01491 837318

- Suede Leather • Alterations • Press Services • Wedding Dresses •
- Settee Covers • Rugs • Laundry • Duvets • Curtains

**250 varieties and colours of basket & patio plants all grown on the nursery**

**HANGING BASKET SPECIALISTS**

**BEDDING & CONTAINER PLANTS**

**VEGETABLES & HERBS**

**PERENNIALS, CLIMBERS & SHRUBS**

Seasonal Opening: April-July & September-November  
7 days a week - See website for details

e: [andy@purelyplants.co.uk](mailto:andy@purelyplants.co.uk) 01491 833 831 w: [www.purelyplants.co.uk](http://www.purelyplants.co.uk)  
Purely Plants Nursery, 142a Wantage Road, Wallingford, Oxfordshire OX10 0LU

## Get a job, change jobs – or discover what it is you'd like to do next.

Early, mid, and encore career coaching by a Certified Business Psychologist with executive level business experience

Work-life preference and abilities exploration, uncovering the hidden jobs market, CV development, and interview practice.

In person, in Wallingford, or online.

Alan Hayes MSc CBP

T: 0792 110 9073

**DISCOVER**  
CAREER COACHING

E: [info@discovercareercoaching.co.uk](mailto:info@discovercareercoaching.co.uk)



**MOSSINATOR®**  
ROOF CLEANING SYSTEMS

- Moss Removal
- Roof Cleaning & Treatments
- Solar Panel & Skylight Cleaning
- Render & Brickwork Cleaning
- Installation of Bird Control

Contact us to find out how we can help transform your property:  
**01865 362797 • [www.mossinator.co.uk](http://www.mossinator.co.uk)**



**CLEAN MACHINE**



- Vacuum Cleaners • Repairs • Bags & Accessories
- Power Washers • Steam Cleaners • Carpet Cleaners
- Scrubber • Driers • Window Cleaning Poles • Sanders



@cleanmachineltd



@CleanMachineLtd

2 St. Peter's Place, St. Peter's Street Wallingford, OX10 0BG Telephone:

**01491 825600 • email: [info@machinesthatclean.com](mailto:info@machinesthatclean.com)**

**[www.machinesthatclean.com](http://www.machinesthatclean.com)**



THE WALLINGFORD BOOKSHOP  
10C ST. MARTIN'S STREET  
WALLINGFORD, OXFORDSHIRE OX10 0AL  
Telephone / Fax: 01491 834383  
Email: [books@wallingfordbookshop.com](mailto:books@wallingfordbookshop.com)

We offer friendly informed assistance and an excellent range of books, audios and fine art stationery.

Many titles not stocked can be obtained within 24 hours.

# GRAPE MINDS

Hand-selected wines, spirits and beers



- **Free Delivery**  
(for 6 or more bottles)
- **Party Services**  
(sale or return, free glass hire & more)
- **Friendly advice**
- **Tasting evenings**
- **Wine open to try**



**Retailer of the Year 2022**  
Oxfordshire Business Awards

**10 St Martin's Street, Wallingford OX10 0AL**  
**01491 824549**

[www.grapemindsdrinkalike.co.uk](http://www.grapemindsdrinkalike.co.uk)

## Manor Café at Howbery

Open: 9am-4pm, Mon-Fri

MANOR CAFÉ  
at  
Howbery



- ✓ Hot and cold drinks, homemade cakes: **all day**
- ✓ Breakfast: **9.00am - 10.30am**
- ✓ Paninis, baguettes and baps: **11.00am - 2.00pm**
- ✓ Hot and cold lunch options: **11.30am - 1.30pm**

Order online or at service counter | Outside and indoor seating areas  
Takeaway service | Beautiful grounds | Ample parking

[www.howberypark.com](http://www.howberypark.com)



*Shellfish Com  
Restaurant & Bar*

*28 High Street  
Wallingford*

[www.shellfishcom.co.uk](http://www.shellfishcom.co.uk)

01491 832 807

[wallingford@shellfishcom.co.uk](mailto:wallingford@shellfishcom.co.uk)



## THE GEORGE HOTEL

Wallingford



High Street • Wallingford • Oxfordshire • OX10 0BS

Tel: 01491 836665



e-mail: [info@george-hotel-wallingford.com](mailto:info@george-hotel-wallingford.com)

[www.george-hotel-wallingford.com](http://www.george-hotel-wallingford.com)



**Red Lion**  
Brightwell cum Sotwell

Corinne & Mouse Welcome you.  
*Pop in and Say Hello*

The Street, Brightwell-cum-Sotwell, Oxfordshire OX10 0RT

01491 837 373

[www.redlionbrightwell.co.uk](http://www.redlionbrightwell.co.uk)

FB: RedLionBrightwellcumSotwell



EST. 1995

**Mr & Mrs Park's**

FAMILY BUTCHERS

**High welfare local produce**

**Knowledgeable and friendly service**

**A great range of local cheese, wines and much much more.**

**Catering available including hog roasts and barbecues as well as picnic spreads in the warmer weather.**

**Taking orders for Easter now**

*Check out our website or follow us on Facebook or Instagram to learn more.*

5 The Pound, Cholsey, Wallingford, Oxfordshire, OX10 9NS

01491 651300 • [info@mrandmrsparks.co.uk](mailto:info@mrandmrsparks.co.uk) • [www.mrandmrsparks.co.uk](http://www.mrandmrsparks.co.uk)



April already...! A wonderful time of year for the gourmand, as the new season's produce starts to become available, and we approach bank holiday season in earnest. There's always a temptation to write about wines for Easter at this point, but if you've ever tried to pair wine with chocolate, you'll know it's impossible unless it's sweet, fortified or preferably both. So instead, let's consider spring lamb, greens, and fresh herbs, and a wine which provides the perfect foil to them all.

This month, I've chosen the Domaine des Mailloches Bourgueil Vieilles Vignes, and as a first tribute to its excellence, the glass I poured myself to accompany the writing of this article has already disappeared. Bourgueil is a slightly under the radar appellation, producing supple, serious reds from the region around Tours in the Loire Valley. Wines are made of Cabernet Franc, which is a versatile, delicious and ageworthy grape found also in Bordeaux, particularly in St-Émilion, though in the Loire their character is somehow both richer and gentler, focusing on raspberry fruit and layers of savoury herbs.

Domaine des Mailloches have been producing Cabernet France here for 6 generations, and the grapes from which this cuvee is produced come from "vieilles vignes", vines between 80 and 100 years old. These vines are found in three vineyard sites, and the art of the winemaker shines in the selection of expressive grapes from near the river in perfect proportion with the reserved, more structured grapes from the clay and limestone soils on the hillsides. These are blended after fermentation, and aged in tank for up to 18 months before bottling.

The result is a wine that offers raspberry and plum flavours with an unmistakeably sage-y herbal lift. Tannins and acidity are both present, but soft, meaning this is a wine you can serve a few degrees below room temperature. It's silky in the mouth, and the depth of flavour means it's a perfect complement to those fresh greens, and the sweet tender notes of roast lamb.

The Loire is so synonymous with its famous whites that the reds are easy to overlook, but it's a real shame to do so. This wine is sophisticated and beautifully made, and its relative obscurity means you get a huge amount of value for the bottle. For something versatile with all the flavours of spring, it's unbeatable at this price. Cheers!

*Michael Jelley is the Director of Grape Minds Wallingford*



**WOW  
SPECIAL  
OFFER**

Wine Name: Bourgueil Vieilles Vignes 2018 Producer: Domaine des Mailloches

Grapes: Cabernet Franc Region: Loire Valley, France

Exclusive Price: £12.99/bottle until the next issue. Just mention Window on Wallingford in store!

**WALLINGFORD  
TEA & COFFEE**



We roast  
High Grown Coffees  
and we stock Quality Teas  
together with a range of  
Herbal beverages and Spices  
plus a wide variety of  
Tea and Coffee accessories

Wallingford Tea & Coffee  
Company Limited  
6a St. Martin's Street  
Wallingford, Oxon. OX10 0AL  
Telephone: 01491 836263  
kitchtea@gmail.com

**Londis**

38 Sinodun Road, Wallingford

Tel: 01491 837932

**Fruit & Vegetables • Newspapers • Magazines  
Beers & Wines • Mobile Top-up Vouchers  
Plus the National Lottery**



**best value locally**

Opening hours:  
Mon-Sat. 6.00am-8.00pm  
Sunday 6.30am-1.00pm

**No Problem  
No Call Out Charge**

**Gutters Cleared**

We remove leaves - moss - grass - growth & debris

**Photos**

Before & After

We do a camera survey first



**Conservatories & up to 4 Storeys**

Tall buildings, schools, nursing homes  
and industrial units.

**£5million insurance & a Receipt**

Peace of mind that we're a proper business.

**Timed Appointment**

You can track our arrival online

Get an instant price

**01491 815 450**

or book online [gutterpro.co.uk](http://gutterpro.co.uk)





**New 2023  
STARTING  
MON 23 JAN  
Sessions**

Parent & Toddler

# Stay & Play

Come and join us Monday mornings 09:30am-10:30am

Book your place for a fun-filled morning: [www.cranfordhouse.net](http://www.cranfordhouse.net)



**CRANFORD  
HOUSE**

Excellence in Independent Education  
for Boys and Girls aged 3-18

[www.cranfordhouse.net](http://www.cranfordhouse.net)

## HAVE TROUBLE WITH YOUR TREES?

NEED SOME HELP? ASK THE EXPERTS

- Tree removal
- Tree thinning
- Stump grinding
- Hedge trimming

- Tree pruning
- Tree felling
- Landscaping
- Fencing

We are city & guilds nptc qualified and insured  
you can feel safe dealing with us.

Call now to see how we can help Free no obligation quote


## 1<sup>st</sup> CLASS TREE SURGEONS

E. [quote@firstclasstreesurgeons.co.uk](mailto:quote@firstclasstreesurgeons.co.uk)

T. 07889 881 525  
[firstclasstreesurgeons.co.uk](http://firstclasstreesurgeons.co.uk)

**Mallams**  
1788

## Thinking of selling your artwork?



Design & Modern Art Specialist  
Max Fisher, is available to give  
free confidential valuations on  
any piece(s) you are considering  
selling at auction.

**Home visits also available**  
Enquiries:  
01865 241 358 or  
[max.fisher@mallams.co.uk](mailto:max.fisher@mallams.co.uk)  
[www.mallams.co.uk](http://www.mallams.co.uk)

# WEPS

WALLINGFORD ELECTRICAL & PLUMBING SUPPLIES

---

OPEN TO THE  
TRADE & PUBLIC

---

01491 827825

SALES@WEPS.ORG.UK

UNIT 1 MOSES WINTER WAY



## KJ MOBILE HAIR

*Katie Drew*  
Cutting Technician

Phone/Text 07730400595  
Email: [kjmobilehair86@googlemail.com](mailto:kjmobilehair86@googlemail.com)



**HAYNES**  
Car Care Centre

servicing...batteries...tyres...fantastic value

Bushells Business Park, Lester Way,  
Wallingford Oxon OX10 9DD

[www.haynes-car-care.co.uk](http://www.haynes-car-care.co.uk)

- All Makes Servicing and MOT's
- Parts & Accessories
- Air Con Re-Gas
- Courtesy Car
- Batteries & Tyres
- 4 Wheel Laser Tracking

Proud Sponsors of Wallingford Vehicle Rally & BunkFest



01491 836 097