



The Community magazine of Wallingford. Delivered **FREE** to over 4000 homes and businesses



## Personalised Mugs

[www.rainbowprint.co.uk](http://www.rainbowprint.co.uk)

Sponsors of

Oxfordshire Wildlife Rescue

Family Crest Gifts, Prints, Coasters

Teddies etc..







# Sunshine Painting & Decorating

**LANCE THOMPSON**  
FRIENDLY RELIABLE SERVICE

**For All Your Decorating Needs  
Call For A Free Estimate.**  
**07780 221950**

lance.sunshine@btopenworld.com      www.sunshinedecorating.co.uk  
f @sunshinedecorator      @sunshine\_pd  
FULLY INSURED | CHOLSEY, OXON

# Masterfloors

Contract and Domestic Flooring Specialists



20 St. Martin's Street  
Wallingford  
Oxon. OX10 0AL  
Tel: 01491 833701  
Free estimates



**nicf**  
national institute of carpet & fitters

www.masterfloorswallingford.co.uk



OAK FRAME SPECIALISTS

## COUNTRYSIDE OAK

TRANSFORM YOUR HOME WITH AN OAK FRAME PORCH

*The quality of the work is excellent, and the experience was very smooth, highly professional"*

TEL: 01491 659093      EMAIL: hello@countrysideoak.co.uk  
WEBSITE: www.countrysideoak.co.uk



# HOMEBASE

PROPERTY

★ WHATEVER YOUR PROPERTY NEEDS ★

**SALES**

**LETTINGS & MANAGEMENT**

01491 824470 | info@hb-pm.co.uk  
16B St Mary's St, Wallingford, OX10 0EW

## Selling or Renting out Your Property?



- Virtual furniture & accessories styling
- Rental furniture & accessories staging
- Complete design, supply & install service

Our styled and staged properties stand out from the crowd, meaning they sell quicker and more profitably

Call: Fiona on 07779 329352  
Visit: [www.fushiadesign.com](http://www.fushiadesign.com)  
Email: [fiona@fushiadesign.com](mailto:fiona@fushiadesign.com)



FUSHIA DESIGN  
Interior Design Service



# Wallingford

— TILES & BATHROOMS

## Tile & Bathroom Showroom



**Call Now 01491 377 272**  
[showroom@wallingfordtilesandbathrooms.co.uk](mailto:showroom@wallingfordtilesandbathrooms.co.uk)



# MERRY CHRISTMAS

& HAPPY NEW YEAR  
WINDOW ON WALLINGFORD



Welcome to your  
community magazine

To advertise in Window on Wallingford please  
contact us on: [info@windowonwallingford.co.uk](mailto:info@windowonwallingford.co.uk)

## Adverts:

Must be sent in JPEG or PDF formats in their  
highest quality.

## Advert sizes:

95 mm x 53 mm  
95 mm x 110 mm  
192 mm x 50 mm  
210 mm x 297 mm  
210 mm x 148 mm

## Articles:

Supplied in MS word. Please provide any photos or  
images including logos separately (jpeg files) that  
you would like in your article.

**Deadline date to submit:** 10th January 2022

**Editor:** Naomi Reddyhoff  
[info@windowonwallingford.co.uk](mailto:info@windowonwallingford.co.uk)

**Marketing, Accounts & Administration:** Jessica Dovey  
[jess@windowonwallingford.co.uk](mailto:jess@windowonwallingford.co.uk)

**Distribution:** Naomi Reddyhoff  
[info@windowonwallingford.co.uk](mailto:info@windowonwallingford.co.uk)

**Advertising Sales:** Lesley Longden  
[lesley@windowonwallingford.co.uk](mailto:lesley@windowonwallingford.co.uk)

**Feature Writer:** Rosa Maitland  
[info@windowonwallingford.co.uk](mailto:info@windowonwallingford.co.uk)

 @windowonwallingford

 @window\_on\_wallingford

Whilst every effort is made to ensure the accuracy of information  
printed in the magazine, the Editor and Publisher do not accept  
any responsibility for the consequences of any errors that may  
occur. Material published in the Window on Wallingford  
Magazine is copyright, but normally the Editor will be pleased to  
grant permission for it to be reproduced, if asked on each occa-  
sion. The opinions published in this magazine are not necessarily  
those of the Editor, Publisher or WoW.

Adverts will continue to run unless cancelled.

## Hi Everyone

2021 has been a slightly strange and most amazing year. Some sadness and  
losses, some joyfulness and gains. Overall, though, I believe it has turned out  
okay in the end.

Booster jabs, travel, jobs, firework displays and lots of new businesses opening,  
especially in Wallingford.

I would like to take this time to thank all our Delivery Volunteers. Without you there  
would be no magazine to read. Thank you very, very much for all your past and  
continued delivering.

It is with sadness that we say goodbye to two of our long-standing Distributors:  
Michael Collins and David Simmons are stepping down after many years of service.  
Team WoW thank you for all that you have done for the magazine, you will be  
missed, we wish you all the best.

### Now I need to put out a plea for some more volunteer distributors please.

It takes about 3 hours a month to drop the magazine off to deliverers, you will need  
a car and a little bit of muscle to lift the magazines. Please get in contact with us if  
you can help. [info@windowonwallingford.co.uk](mailto:info@windowonwallingford.co.uk)

We hope you like the design of the magazine this month. Chris, our designer, and  
setter, decided to do something different.  
Personally, I love it. We also get to showcase two local artists at the same time.  
Mandy Reekie for her fabulous Wallingford Christmas cards and Claire Cross for her  
wonderful Wallingford World.

So, we move forward to a New Year, 2022, I'm positive there are many exciting  
things to come, a bit more normality and some new normality. We will see you then.

Have a Cracking Christmas and a Delightful New Year.

Stay safe, have fun.

Team WoW




### About the cover artist

I've lived here in Wallingford with my husband  
Michael for almost five years. In 2012 I gave up my  
part time job in a school after sadly losing my sister Kate to Motor Neurone  
Disease. She was only 57 and losing her so tragically made me rethink my life and  
future and spurred me on to do something more creative that I felt passionate  
about and, to be honest, I've barely looked back.


The reaction to my work has been amazing and I am lucky to have been so busy  
painting lovely joyful portraits for people. I also regularly sell prints of local places  
of interest and my Christmas cards are now for sale, so please get in touch if you'd  
like to order anything. Many thanks folks.

**email [mandyreekie61@gmail.com](mailto:mandyreekie61@gmail.com), [www.Facebook.com/MandyReekieArt](https://www.Facebook.com/MandyReekieArt)**




## Sims Solar


Your local MCS accredited installer of  
Solar Photovoltaic (PV) and Battery Storage Systems



- Providing immediate savings on energy costs
- Future proofing against rising energy costs
- Benefiting from the Smart Export Guarantee (payments made on what you actually export)
- Battery backup to keep your lights on
- Never so affordable
- Now installing EV charging stations

For independent advice and free quotation, please contact Paul on:  
01491 836065, 07717 004240 or through our web site at  
[www.simssolar.co.uk](http://www.simssolar.co.uk)







Vacuum cleaners - repairs bags & accessories  
Power washers Steam cleaners Carpet cleaners  
Scrubber driers Window cleaning poles Sanders



**CLEAN MACHINE**

1 & 2 St. Peters Place, Wallingford OX10 0BG

**01491 825600 Hire & Sales**

[www.machinesthatclean.com](http://www.machinesthatclean.com)

e-mail: [info@machinesthatclean.com](mailto:info@machinesthatclean.com)



@cleanmachineltd



Find us on  
Facebook

/CleanMachineLtd

## C. A. HOLTOM Building Contractor

Established 1988

FOR ALL TYPES OF

Building - Extensions - Plastering - Refurbishment

Alterations - Brickwork - Patios - Drainage

Tel: 01491 651141 / 07990912966

Email: [choltom1@sky.com](mailto:choltom1@sky.com)



**FITZCOUNT LAND**

Wallingford based Land, Planning &  
Property Development Specialists

Contact [adam@fitzcountland.co.uk](mailto:adam@fitzcountland.co.uk) 07493170307

# WEPS

WALLINGFORD ELECTRICAL & PLUMBING SUPPLIES

**OPEN TO THE  
TRADE & PUBLIC**

**01491 827825**

**SALES@WEPS.ORG.UK**

**UNIT 1 MOSES WINTER WAY**

**LOVE HAIR? LOVE FASHION?  
BE A HAIRDRESSER**

**Apprenticeships available now!**



Call Forresters: **01491 837 523**

Drop in: **25 High Street, Wallingford**

**Forresters4hair.com**



**Apprenticeships**

**Tom Cottrell Landscapes**

EST 1974 Family Run Business

**Telephone: 01491 836974**

**All tree aspects - Dave Cottrell**

Felling • Reducing • Reshaping  
• Thinning, Removal • Pollarding  
• Shrub & Tree Pruning • Dead Wood  
• Removal Hedge Management  
• Stump Grinding

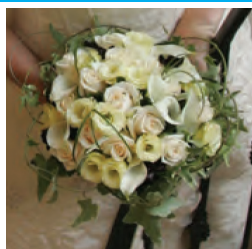
**Garden & Landscaping Services**

Turfing • Hedge & Grass Cutting  
• Planting • Fencing • Patios  
• General Garden Maintenance  
• Garden Renovation & Construction  
• Woodchip Mulch  
• Seasoned Logs & Kindling Wood

**[www.tomcottrelllandscapes.com](http://www.tomcottrelllandscapes.com)**

**Email: [tomcottrelllandscapes@gmail.com](mailto:tomcottrelllandscapes@gmail.com)**

Orchard Cottage, High Road, Brightwell-cum-Sotwell, Nr Wallingford, Oxon OX10 0PS



INSPIRATION CREATION TUITION

1 Ayres Yard, Station Road, Wallingford, Oxon OX10 0JZ

T: 01491 838005 E: [keri@wallingfordflowers.co.uk](mailto:keri@wallingfordflowers.co.uk)

[www.wallingfordflowers.co.uk](http://www.wallingfordflowers.co.uk)

## HOWARD CHADWICK FUNERAL SERVICE

A caring family owned and managed Funeral Service

- Dedicated Private Chapel of Rest •
- Golden Charter Pre-Paid Funeral Plans •
- Specialists in Memorial Stones and Designs •

**33 Benson Lane, Crowmarsh Gifford,  
Wallingford OX10 8ED**

**Tel: 01491 825222**

[www.chadwicksfuneralservice.co.uk](http://www.chadwicksfuneralservice.co.uk)



Golden Charter  
Funeral Plans

## Winterbrook Garden Services Ltd

Garden Design, Construction &  
Maintenance

Fencing  
Patios

Full Pruning Service

Tel: 01491 838189

Mobile: 0775 36 36 333

[winterbrookgs@gmail.com](mailto:winterbrookgs@gmail.com)



## Winterbrook Garden Nurseries

High Road, Brightwell-cum-Sotwell,  
OX10 0PS

Independent plant nursery  
specialising in herbaceous  
perennials  
& garden curios

[www.winterbrookgardennurseries.com](http://www.winterbrookgardennurseries.com)



@winterbrookgardennurseries







---

# Keep doing what you love at Benson House

We will never compromise what matters to you and your family

Benson House Care Home gives you much more than a lovely new home. Whether you enjoy afternoon tea with family, tending to the garden, having a stretch in a yoga class or pulling up a chair with a favourite novel, there's something for everyone. Plus you'll have the added reassurance of help when you need it because we always put residents' wellbeing, independence, personal preferences and safety at the heart of everything we do.

Our care  
home is open  
for viewings

Call us on freephone 0808 223 5401  
Find us online [caringhomes.org](https://caringhomes.org)  
Churchfield Lane, Benson, Wallingford,  
Oxfordshire, OX10 6SH

**Benson House**  
  
CARING HOMES



# The Christmas 'Tree of Gratitude' Sunday 5th December 2021

With kind permission from Wallingford Town Council, the tree will be positioned at the Rest Gardens again, next to Past & Present, and opposite Waitrose in St. Martin's Street, where it will remain throughout the Christmas period until the New Year. For those residents new to Wallingford, the 'Christmas Tree of Gratitude' is for leaving messages for our loved ones who have died, loved ones who are ill, and it also includes animals who are important members of our families. Christmas can be a sad, lonely and painful time for people living with loss.

## We will be at the tree for you to write your message on the Wallingford Shopping Day, Sunday 5th December, 11am-2pm.

From then on, the baubles will be available at the Town Information Centre (under the Town Hall) for you to collect. Messages may also be sent to me by email or landline (details below).

**Theresa Jordan**

**1 Thames Street, Wallingford OX10 0BH**

**Email: roytheresalodge@aol.com Landline: 01491 836240**

## Citizens Advice information on vanishing energy suppliers

Many people have recently had the disconcerting experience of seeing their energy supplier break up and go out of business during the recent energy price fluctuations. It sounds pretty drastic, but the situation isn't as bad as it seems.

**citizens  
advice**

If you are one of those affected, remember these key facts: first of all, the gas or electricity supply itself won't be interrupted, so don't be concerned about that. Next, you should know that Ofgem, the industry regulator, will automatically move you to a new supplier. This usually takes a few weeks.

Wait for your new supplier to contact you. They will explain what will happen with your new account. But contact the new supplier yourself if you haven't heard from them within two weeks. You can check on [www.citizensadvice.org.uk](http://www.citizensadvice.org.uk) ("check who's taken over your energy supply") if you're not sure who your new supplier is.

While you're waiting to hear from the new supplier, it's a good idea to take meter readings (and a photo of the readings) as they might prove useful later. Make a note of your account balance too. Keep any old bills you have, as these can help prove your payment history, credit balance or debt.

If you aren't happy with your new supplier or tariff, you can switch suppliers. Look at "**switch energy supplier**" on our website or ring the **Citizens Advice Consumer Helpline on 0808 223 1133**.

Many people are seeing their energy bills increase significantly. If you are one of them, and worried about being able to meet these higher energy payments, please contact **Citizens Advice on our Adviceline number 0808 278 7907**.

Citizens Advice has slightly different advice for small businesses whose energy suppliers have gone out of business. Please visit the Citizens Advice website [www.citizensadvice.org.uk](http://www.citizensadvice.org.uk)

## Slimming World groups are back open in the community

Slimming World groups are back open in the community face to face and the local Consultants are so excited to welcome new and returning members back, as they are well aware how hard the last 20 months have been for so many.

With the national obesity rate more than doubling in the last 25 years here in the UK, and 72% of the population struggling with their weight since the pandemic, Slimming World are on a mission to help and support the local communities to losing weight in a safe, supportive and fun way.

**Slimming  
WORLD**

touching hearts, changing lives

In **Wallingford & Cholsey, Slimming World** groups run on various days and times to give members flexibility and choice when it comes to deciding which group they'd like to attend. The local groups meet every week and support members to make changes to their shopping, cooking, eating and activity habits. Their healthy eating plan, Food Optimising, is easy to follow, generous and flexible and it makes slimming much easier than other weight loss programs which their members have tried. It is based on sound nutrition principles. It uses normal everyday healthy foods – no fads or gimmicks, just healthy eating in a way people can follow for life. They also help members to gradually increase their physical activity levels in ways which suit their lifestyle and at their own pace, with their activity programme, **Body Magic**. A warm welcome awaits at all of the Slimming World groups, no booking required. They look forward to welcoming you soon.



# At the Heart of Christmas - St Mary's and St Leonard's Wallingford

At the Heart of Christmas is the theme which runs through our Christmas services and activities for 2021. We very much hope that COVID restrictions this year will enable us to celebrate Christmas with a greater in-person presence than was possible last year. Here are a few highlights in addition to our usual Christmas services:

## Preparing for Christmas

As we prepare for Christmas we have once again set up our online Advent Challenge with a different activity or challenge every day. To access it, go to the Advent & Christmas page of our website [www.marylemore.co.uk](http://www.marylemore.co.uk)

## Christmas Shopping Sunday – 5th December

It will be good to see Wallingford once more bustling with this event. St Mary's will be open from 13:00 to 15:00 for teas, coffees and cake. We shall also be offering activities for children and families.

## Christingle – 12th December

This has always been a very popular event as we fill our church with light and support the Children's Society charity. This year it is on Sunday 12th December at 10:00. To make a Christingle, go to the Advent & Christmas page of our website [www.marylemore.co.uk](http://www.marylemore.co.uk)

## Tree of Remembering

For many of us, Christmas is also a time when we look back and often remember people who have died, people who have been a special part of our lives but are no longer with us. So from 1st December our Tree of Remembering will be in St Mary's. This tree offers the opportunity to remember friends and family who have died by hanging a star on the tree with the person's name. The tree will be available to everyone until 31st December. Fuller details available in St Mary's.

## Longest Night Service – 21st December

2021 has been a difficult year as we have continued to cope with COVID and its many sad repercussions. So we are holding a reflective Christmas carol service (in addition to our usual service of Lessons & Carols) for those for whom this might be a difficult time of year. We hope that this will help those who take part to find space and hope, which the Christmas story offers. This service - The Longest Night - will take place in St Mary's on Tuesday 21st December at 19:00.

## Other Christmas services : all at St Mary's unless otherwise indicated

**Sunday 28th Nov** – Advent Carol Service 18:30

**Sunday 19th Dec** – Nine Lessons & Carols 18:30

**Christmas Eve** - Crib Services 15:00 and 16:30

- Midnight Communion 23:30

**Christmas Day** – Holy Communion 08:00 (St Leonard's)

- Christmas Family Communion 10:00

**At the heart  
of Christmas**



**St Mary's & St Leonard's  
Wallingford**

*open to God, open to all*

Finally, underpinning our program of services and events is the theme: At the Heart of Christmas. From Christmas Eve until Epiphany (6th January) there will be a series of stories and meditations which explore themes close to the heart of Christmas. To find out more, or to receive these daily messages into your in basket, please go to the Advent & Christmas page of our website [www.marylemore.co.uk](http://www.marylemore.co.uk)

## Wildlife (hospital) on our doorstep – can you help?

**Oxfordshire Wildlife Rescue (OWR)** now has a dedicated wildlife hospital pretty much on our doorstep (well, Wildway Road in Blewbury, OX11 9HW).

OWR is a registered charity which rescues, cares for and rehabilitates any sick, injured or orphaned British wildlife. Last year alone, over 3,200 animals were rescued – from tiny mouse pups to full-grown deer!

At the moment, we are looking after a lot of young hedgehogs, trying to get them to a healthy weight which will allow them to survive their winter hibernation. So, if you can help with any of the following, it would really help save lives:

- Tins or pouches of meat (ideally chicken) flavour cat, dog, kitten or puppy food. No fish please – it makes them poorly!
- Old towels for little hoglets (very young hedgehogs) to snuggle in
- Clean newspaper for hedgehog bedding



**Please drop donations at the hospital - there's a bin for them by the gate. Or if you can't get to Blewbury, please phone local volunteer Susan on 0790 320 7184. Follow "Oxfordshire Wildlife Rescue" on Facebook for news of our patients and activities.**





With thoughts turning towards holidays again, please do get in touch as we would love the opportunity to quote and help with your travel plans. From closer to home to far flung destinations, villas to cottages, hotels to tailor made tours, we can help with anything. We provide full financial protection, free expert advice and guidance in an uncertain world and can book companies such as TUI, EasyJet Holidays and Jet2 at no extra cost to you. We also work with hundreds of fantastic independent travel companies with an incredible range of holidays and experiences.

Do get in touch to discuss any plans you may have for this year, 2022 or even 2023. Next year is already filling up fast and we recommend early booking to get the best deals.

The Old Counting House, 82e High St, Wallingford OX10 0BS  
[www.fullcircletravel.co.uk](http://www.fullcircletravel.co.uk)  
01491 833227



Faith cometh by hearing and hearing by the Word of God (Romans 10:17, the Bible)

Wallingford Christian Assembly brings you:  
A message of Hope from the Bible

Join us online  
Every Sunday @ 17:00  
20 min message

We invite you to hear a short message from the Bible, available from the comfort of your own home.

To watch live:  
Zoom ID: 491 229 776  
Passcode: 316

Not able to join on a Sunday – catch up on demand:  
@Wallingford Christian Assembly

@GodsGoodNews (God's Good News for South Oxfordshire)

Wallingford Christian Assembly  
[www.wallingfordchristianassembly.org.uk](http://www.wallingfordchristianassembly.org.uk)

**Illumin-Nation Ltd**  
5 St Peters Place, St Peters Street  
Wallingford, Oxon OX10 0BG

[allan.priddle@btconnect.com](mailto:allan.priddle@btconnect.com)  
[www.illumin-nationltd.co.uk](http://www.illumin-nationltd.co.uk) 01491 833505

## Wallingford Methodist Church

St Leonard's Square  
[www.wallingfordmethodistchurch.org.uk](http://www.wallingfordmethodistchurch.org.uk)

**Sunday Worship 10.30 am and 6.30 pm.**  
**Junior Church and Creche at 10.30 am.**  
EVERYONE WELCOME

**Thursdays 10.30 - 12.00**  
Call in for coffee and a chat

For details of other activities, including mid-week prayer & house groups, please contact our minister, Rev. Jocelyn Bennett  
Telephone: 01235 813242

Dr. A. Ratti BDS (Hons) Kings College London

## ST MARY'S DENTAL PRACTICE

**New patients welcome**  
Affordable quality private dental service  
from a caring team  
New maintenance plan available from Jan 2018  
Call for more information  
**01491 825 252**  
[www.stmarysdental.co.uk](http://www.stmarysdental.co.uk)



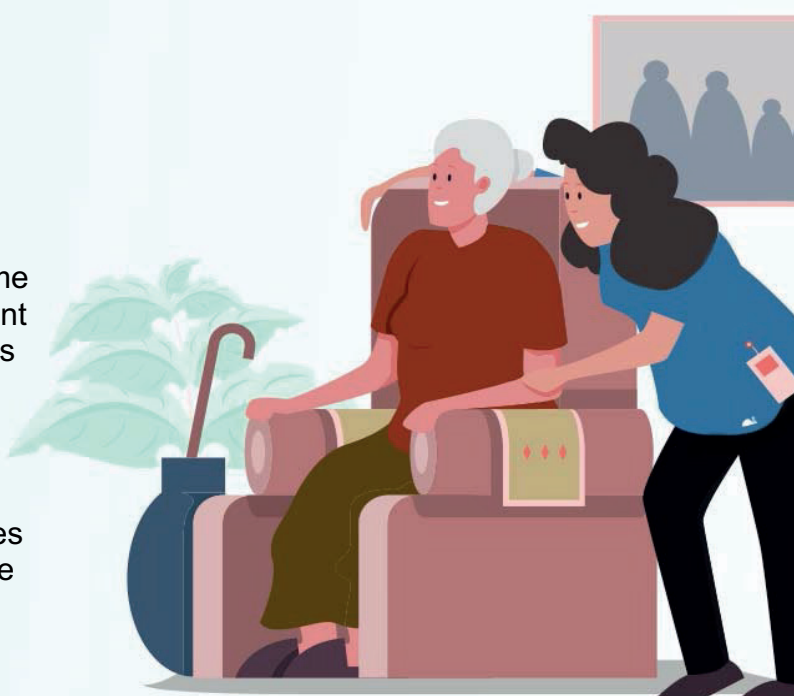
# Q1Care

## Do you, or a loved one, require support at home?

Q1Care prides itself in offering 'high quality' home care to enable people to stay safe and independent at home. We offer as much, or as little, support as required. From *companionship, practical help*, through to *complex needs*.

## Work with us?

Become a valued employee, join a team that cares and make a difference to your community. Please email: [heloise.slater@q1care.co.uk](mailto:heloise.slater@q1care.co.uk) for more information.



**Home Care across West Berkshire & South Oxfordshire**  
Email us: [info@q1care.co.uk](mailto:info@q1care.co.uk) / [heloise.slater@q1care.co.uk](mailto:heloise.slater@q1care.co.uk)  
Call us: 0118 932 3865  
Visit us: [www.q1care.co.uk](http://www.q1care.co.uk)



 Q1Care



# Wakey wakey my beauties

**Sweet dreams...** In the words of Princess Aurora, "If you dream something more than once, it's bound to come true." Well it's time to stop dreaming, because the Sinodun Players are back in the Corn Exchange and ready to wow you with their annual pantomime - *Sleeping Beauty*! With rehearsals in full swing, construction of the ground-breaking set is nearing completion. Meanwhile lighting and special effects are in the last stages of design. The costumiers are creating spectacular contemporary outfits, and the soundtrack is almost finalised.

**Old meets new...** You can expect the usual atmosphere of a traditional panto, with the addition of some futuristic twists and plenty of laughs. The classic French fairy tale has been re-worked by Wallingford based Pete Orton and Barbara Wood. We spoke to director Gloria Wright about the importance of the return of pantomime, for the Sinodun Players and audiences alike. "We are all looking forward to welcoming this traditional entertainment back at the Corn Exchange, after what has been a difficult time for us all."

**New age time travellers...** The new-age version of *Sleeping Beauty*, promises to be a high-quality performance, typical of the Sinodun Players. Their talented youth section 'Encore,' are also performing in a diverse variety of roles. The innovative set is something very new for the Corn Exchange too, and is sure to amaze you when it is unveiled on opening night! The re-worked script features more than one departure from the traditional story, but with plenty of humour. A host of unconventional characters even includes a cat taking a pivotal role! Add a good handful of contemporary tunes and you'll find it impossible to stop your toes from tapping!

**Key players...** The Sinodun Players have been a key part of the cultural life of Wallingford since 1948, acquiring the Corn Exchange in 1975. Previous members include Dame Agatha Christie, who served as President from 1951 to 1976. Here you can enjoy live entertainment or the latest films, in an iconic setting. A much-needed diversion in today's high tech and permanently connected world. Theatre groups are a valuable but often neglected resource. They create social hubs, combatting loneliness and exclusion. Not to mention, encouraging empowerment by sharing and learning new skills. Behind the scenes are a huge number of people with a diverse range of skills, from sewing and painting to rigging lights and sound engineering. Fancy showing off your talents while having fun working with a great bunch of people? Why not visit their website and explore the opportunities to become involved?

**Hard times...** The last 18 months has been a tough time for the entertainment industry in the UK. Ringing the death knell for some theatre companies, unable to weather the storm. Now is the time for the amazing people of Wallingford to come together and play a part in ensuring the future of theatre in our town. Ticket sales will provide essential funds to help the Players continue their service to the community. They also ensure that the beautiful grade two listed Corn Exchange will be here for generations to come.

"So book your tickets now, says Gloria, and support your local theatre." "You'll also be giving yourself, your family and friends a fun night out, no matter what age you are".

**Booking now open online at [www.cornexchange.org.uk](http://www.cornexchange.org.uk)**  
**Email: [info@cornexchange.org.uk](mailto:info@cornexchange.org.uk)**

## SHOW DATES & TIMES 2022:

**Performances – Friday 14th to Saturday 29th January**

**Tuesday – Friday performances at 7.30pm**

**Saturday Matinee performances at 2pm**

**Saturday Evening performances at 6.30pm**

**No performances Sunday & Monday**



**FREELANCE.**

**KEV DYER**  
Freelance Writing Services

+44 7590 663 403  
[info@kevdyer.com](mailto:info@kevdyer.com)  
[www.kevdyer.com](http://www.kevdyer.com)

• Columns • Features • Press Releases  
• Newsletters • Web Content • Blogs



# WOW WHAT'S ON!

## Wallingford Local Producers Market

Wallingford Local Producers Market is looking forward to our second **Christmas in Centre 70**. For those all-important locally-made gifts, do come and see what we have to offer. During this last year we have welcomed a number of new faces and many familiar faces are still with us. Whether you want to buy soft furnishings and other craft items, art works, ceramics, jewellery or special food items as gifts, or just do your weekly shopping, WLPM has it all. If you wish to check who will be attending a market, follow us on Facebook, or sign up to receive our weekly newsletter at [newsletter@wlpm.org.uk](mailto:newsletter@wlpm.org.uk)

## British Modern Military History Society

*Please note we will not be recording or streaming any of our live meetings or Zoom talks.*

It is planned that the first of these two talks will be on Zoom, and the second in Woodcote Village Hall. This may change – please check [www.bmmhs.org](http://www.bmmhs.org) for the latest information.

Our afternoon **Zoom meeting on Tuesday 4 January 2022 at 7.30pm** will be a talk by Jo Hook on Arnhem.

On **Wednesday 12 January 2022 at 7.30pm Guy Walters** will give a talk on The Real Great Escape. In early 1942 the Germans opened a top-security prisoner-of-war camp in occupied Poland for captured Allied airmen. Called Stalag Luft III, the camp soon came to contain some of the most inventive escapees ever known. In this talk Guy Walters takes a fresh look at this remarkable event and asks the question, what was the true story, not the movie version? Check out our website on [www.bmmhs.org](http://www.bmmhs.org) for details of all our talks, and to register for talks, email us on [zoom@bmmhs.org](mailto:zoom@bmmhs.org)

## Wallingford & District Art Club

Get into the festive mood with an online demonstration (via Zoom) on **Tuesday December 7th** from contemporary artist Vicki Norman. Vicki is based in Shropshire and, as well as being a professional artist, enjoys teaching others. For this demo, she will be demonstrating how to set up and paint a Festive Still Life in a loose impressionist style.

If you would like to join us for the demo or to find out how to become a full member of this friendly club, please visit our website [www.wallingfordartclub.org.uk](http://www.wallingfordartclub.org.uk) or contact [admin@wallingfordartclub.org.uk](mailto:admin@wallingfordartclub.org.uk)

**Wallingford & District Art Club** will be welcoming in 2022 with their first online demonstration of the year on **Tuesday, January 18th**. The guest artist will be Les Darlow who specialises in the use of soft pastels to create beautifully expressive landscapes and seascapes. If you would like to join us for this demo, want to develop your artistic side as your New Year resolution and join a group of like-minded people, please visit our website [www.wallingfordartclub.org.uk](http://www.wallingfordartclub.org.uk) or contact [admin@wallingfordartclub.org.uk](mailto:admin@wallingfordartclub.org.uk)

## Wallingford Photographic Club

The Club meets via Zoom every Thursday evening starting at 7.30 pm, with Zoom access from 7.15pm.

We are hoping in the near future to combine the Zoom meetings with actual meetings at the Pavillion, 2 Benson Lane, Crowmarsh Gifford, Wallingford. Please check the website when these face-to-face meetings actually start.

With the run up to Christmas do not miss the following meetings which promise to be fascinating:

### 3rd December – South West USA – An Alternative Grand

**Circle.** The Speaker Bernard Novell talks about his three week tour of the canyons of the SW USA including a 2,500 mile drive from San Francisco, California to Santa Fe, New Mexico. Six states, eight National Parks, the geology, a scenic flight and a dawn balloon ride captured by camera over some of the most stunning scenery on our Planet.

### 10th December – Members Online Competition – “Autumn”

**Theme.** We will be repeating the highly successful experiment from last season, where members submit up to two images (colour or monochrome) for the competition and vote for each image via their phones or computer. Results are determined by popular votes from members.

### 17th December – Christmas Social.

Planned to be via Zoom.

And a tempting taster for the new year...

### 7th January – Members Practical Evening- 8 x10.

Eight members will give presentations for 10 minutes on a wide variety of topics, from Photo Collages and Composites, My Workshop Year, Woodland, The Way I Saw 2020, Before and After..., What Lies Beneath, Forde Abbey to Lockdown Travel.

Please visit [www.wallingfordphoto.club](http://www.wallingfordphoto.club) to learn more about the club and find out how to get involved.

Anne Lusby

## Wallingford Country Market

**Friday morning in St. Mary-le-More Church, (Market Place), between 9.30 am - 12 noon.** With Christmas on the horizon, why not let Wallingford Market help take the strain? Christmas orders can be placed for seasonal and other home baked goods from November onwards. In addition, as well as our regular seasonal plants and produce items, fresh Christmas decorations and wreaths will be available from December. Our Crafters are busy making small hand-crafted gifts and cards.

Do pop in one morning - you may be surprised at what you will find.

Our last market for **2021 will be Friday, 17th December**, but orders can be placed for delivery the following week by arrangement with the producer.

We return after the Christmas break on **Friday, 14th January, 2022**. Country Markets BAKE, CRAFT, GROW. We are currently looking for new producers. If you have any of these skills and feel that you may like to join our team, we would love to hear from you. For further enquiries, please contact Alison Broadbridge, our Market Manager, (email: [alison.broadbridge@gmail.com](mailto:alison.broadbridge@gmail.com)), or come in and speak with her, or any of us, one Friday morning. We wish all our customers an enjoyable Christmas and a very happy and peaceful New Year!

## Winter Recitals Wallingford

After an enforced absence in 2021, this popular series is back in 2022 with sparkling pianist Anita D'Attellis performing with her friends. The first two are on **January 15 and 29**, with 2 more to follow in February and March. They will be at St Mary's Church Wallingford with a 7.30 pm start.

Full details are at [www.anitapiano.com](http://www.anitapiano.com). A welcome return!





**KJ MOBILE  
HAIR**

*Katie Drew  
Cutting Technician*

Phone/Text 07730400595  
Email: [kjmobilehair86@googlemail.com](mailto:kjmobilehair86@googlemail.com)

**ADP FLOORING**

**Adrian Pitson**

Carpet, Vinyl, Wood, LVT Flooring expertly fitted

• Over 30 years experience • Supply & fit • Professional & reliable

[adpflooring@hotmail.com](mailto:adpflooring@hotmail.com) • 07528 210 562

**Fireplace Magic**

**Stoves & Fireplace Sales**

- Solid fuel, gas or electric fires
- Installation
- Chimney sweeping
- Woodburner servicing
- Chimney lining
- HETAS registered

Visit our showroom at  
**45 Prospect Street  
Caversham RG4 8JB  
Tel: 0118 9463060**

[www.fireplacemagic.co.uk](http://www.fireplacemagic.co.uk)




**THE WALLINGFORD BOOKSHOP**

10C ST. MARTIN'S STREET  
WALLINGFORD, OXFORDSHIRE OX10 0AL  
Telephone / Fax: 01491 834383  
Email: [books@wallingfordbookshop.com](mailto:books@wallingfordbookshop.com)

We offer friendly informed assistance and an excellent range of books, audios and fine art stationery.

Many titles not stocked can be obtained within 24 hours.



**GA**

**THE POSITIVE  
OUTCOMES GROUP**

Electrical  
Plumbing  
Fire and Security

**Call: 01491 835875**

Email - [reception@groupga.co.uk](mailto:reception@groupga.co.uk)  
Unit H Moses Winter Way, Wallingford, OX10 9FE




**Daniel Hoadley  
Garden Services**



- Hedge Cutting + Reductions
- Fencing + Repairs
- Clearance + Tidy up
- Lawn Mowing + Weeds

**07498235485**

**THE  
COOKHOUSE  
— DELI —  
WALLINGFORD**

We supply traditional delicatessen styled goods, varying from speciality store cupboard ingredients all the way through to indulgent treats in local cheeses, locally brewed ales and perfect accompaniments to help create the perfect family kitchen.

14 Market Place, Wallingford OX10 0AD

**TUNELESS CHOIR**

*singing like no one is listening*

Tuneless Choirs are for those who have always been told they can't sing in tune but LOVE to do it anyway!

**WALLINGFORD TUNELESS CHOIR**

**Singing in person  
every Thursday evening**

St Mary-le-More Church, Market Place, Wallingford, OX10 0EG  
Registration starts from 7.45pm. Singing starts at 8pm.

Price: **£10** the first time you attend for all new members  
(Includes registration, song book and singing session)  
**£7** pay as you go  
or **£5** per session when booking an 8 week block

**Contact us:**  
**Tracy Noble on 07843 144737**  
[wallingford@tunelesschoir.com](mailto:wallingford@tunelesschoir.com)  
[www.tunelesschoir.com/wallingford](http://www.tunelesschoir.com/wallingford)








# Scout Christmas Postal Service 2021

This year we are able to offer deliveries to the following areas: Wallingford, Winterbrook, Cholsey, Moulsoford, Brightwell-cum-Sotwell, Benson, Preston Crowmarsh, Roke, Rokemarsh, Berrick Salome, Shillingford, Warborough and Ewelme. As good as our service is we can not extend beyond these areas.

If you are new to this service it is run by local scouts with a huge band of willing volunteers. It costs 30p per card, just put the money with your cards in the Scout post boxes found in local shops and businesses. These will be collected during Dec and all cards will be delivered by Christmas Eve.

Boxes will be in place **from Dec 4th** and the last collection will be on **Thursday 20th Dec** (approx 15.30). Please only put cards in the boxes for our delivery areas and ensure they have a complete address, including post codes.

Post boxes in Wallingford can be found in KP Stationers, House of Cards, Feet First Shoe Repairs and Londis (Sinodun Rd). Other post boxes can be found in surrounding villages that have a Scout Group taking part.

In 2019 we delivered over 4500 cards. It would be fantastic if we could come back this year and beat that number. It is a great community service and fund raiser for the local groups involved. Please support it and make use of it for all your local cards.



## Grand opening by the Mayor of Wallingford

A team of volunteers has restored the telephone box ready for the Queen's Jubilee next year.

The phone box will be looked after by the museum and display a modern day history of the estate it is located in.

The team has also landscaped the area and sown wild flower seeds to support biodiversity in the area.

A great community team effort



Photographs of the before and after.



# Can you help inspire our Next Generation?

Scout Groups have been providing a wealth of activities and experiences to the children of Wallingford with the local branch in Benson running for nearly a hundred years.

Scouting offers young people the opportunity to learn new skills, gain independence, enjoy the outdoors and most importantly, have lots of fun! Activities include night hikes in Swyncombe Woods, canoeing on the river, pond dipping and much more.

But, the future of local Scout Groups, like 1st Benson, is reliant on a team of volunteer leaders. We are currently running short of leaders, which has meant less sessions are available and as our community expands, our waiting list is sadly getting longer.

We urgently need new leaders to ensure we can keep running existing sessions and provide opportunities for as many children as possible in our growing community.

You don't have to be a parent or have experience working with children to be a leader as full training and support is provided (DBS checks also a requirement). It's an incredibly rewarding experience and we welcome leaders from all backgrounds.

If you are interested in getting involved please get in touch to find out more by emailing Chris at [jointtheadventure@oxonscouting.org.uk](mailto:jointtheadventure@oxonscouting.org.uk)



**Only £895 for  
a fully fitted  
electric door.**

**Gotta get a Garolla.**

**NOW ONLY  
£895** WAS £1,354  
INC VAT

**WHAT'S INCLUDED WITH EVERY DOOR:**

FREE EXPERT MEASURING & FITTING  
TWO REMOTE CONTROLS  
ACOUSTIC & THERMAL INSULATION  
AVAILABLE IN 21 COLOURS  
FREE DISPOSAL OF YOUR OLD DOOR

Offer valid for openings up to  
2.6m wide & inc: 2 remote  
controls, 55mm white slats,  
internal manual override.

Garolla garage doors are strong and solidly built. They're made to measure in our own UK factories. The electric Garolla door rolls up vertically taking up only 8 inches inside your garage. Our expert installers will fit your new door and take away the old one so there's no mess.

Give us a call today and we'll come and measure up completely Free.

**GAROLLA**  
**ROLLER  
SHUTTER  
DOORS**   
**GOTTA GET A GAROLLA**

CALL US TODAY ON  
**01235 280 072**  
MOBILE **07537 149 128**

[www.garolla.co.uk](http://www.garolla.co.uk)





# Come and join us!

Starting this September our new Nursery joins the Junior School  
Specialist teaching, excellent facilities and outstanding pastoral care.



## CRANFORD HOUSE

Excellence in Independent Education  
for Boys and Girls aged 3 - 18  
[www.cranfordhouse.net](http://www.cranfordhouse.net)

## HAVE TROUBLE WITH YOUR TREES?

NEED SOME HELP? ASK THE EXPERTS

- Tree removal
- Tree thinning
- Stump grinding
- Hedge trimming
- Tree pruning
- Tree felling
- Landscaping
- Fencing

We are city & guilds nptc qualified and insured  
you can feel safe dealing with us.

Call now to see how we can help Free no obligation quote

### 1<sup>st</sup> CLASS TREE SURGEONS

E. [quote@firstclasstreesurgeons.co.uk](mailto:quote@firstclasstreesurgeons.co.uk)

T. 07889 881 525  
[firstclasstreesurgeons.co.uk](http://firstclasstreesurgeons.co.uk)

## Thinking of selling your artwork?

**Mallams**  
1788



Design & Modern Art Specialist  
Max Fisher, is available to give  
free confidential valuations on  
any piece(s) you are considering  
selling at auction.

**Home visits also available**  
Enquiries:  
01865 241 358 or  
[max.fisher@mallams.co.uk](mailto:max.fisher@mallams.co.uk)  
[www.mallams.co.uk](http://www.mallams.co.uk)



Mary Mountstephen

LEARN, GROW, FLOURISH

**Mary Mountstephen MA (SEN) MA (RES)**

- Specialist in Learning Differences in Children Y1-Y8
  - Former Primary SENCO
  - Free initial consultation
- Different levels of assessment to suit individual needs
  - Individual coaching/ tutoring available
- Multi-sensory approaches that stimulate learning progress
  - Personalised support packs
- Expert at 'solving the learning puzzle'
- Building confidence through success



e: [kcsmary1@gmail.com](mailto:kcsmary1@gmail.com)  
m: 07813899348  
[www.marymountstephen.com](http://www.marymountstephen.com)

**Home Instead.**  
*To us, it's personal*

Live well,  
*your way*  
with Care at Home

Your home is where you feel the most comfortable and the happiest. It is the place you know the best. If you want to stay living comfortably at home, Home Instead can help make that possible.

### Home Care is Safe Care

- Home Help • Companionship
- Personal Care • Dementia Care
- Live-In Care

Maidenhead, Henley & Wallingford  
01865 364 418

[www.homeinstead.co.uk/wallingford](http://www.homeinstead.co.uk/wallingford)

"Want to join our amazing team?  
Get in touch - we are recruiting now!"

