

Personalised Mugs

www.rainbowprint.co.uk

Sponsors of

Oxfordshire Wildlife Rescue

Family Crest Gifts, Prints, Coasters

Teddies etc..





We are hiring!



We are looking for staff who have
a passion for working with the elderly

We're looking for dedicated, warm hearted people to work in our luxury care home, Benson House, Caring Homes purpose-built home in the village of Benson. Providing residents with high quality residential, nursing and dementia care.

If you are looking to join a fantastic Care Home family and if making people's lives better, is what gets you up in the morning, you should come and join a like minded team at Benson House care home.

We have vacant positions across the home including:

- Senior Care Assistants
- Care Assistants
- Hospitality
- Kitchen
- Domestic Assistants

If you want to be part of our team and have the drive and the talent to support our residents at Benson House then we want to hear from you!



Hi Everyone

It's February already and we're on the run up to spring, such a lovely season when everything starts to spring into life.

We've got some interesting articles in the magazine this month. Coffee Culture is back at the Royal Standard, Wallingford Accessible Boat Club is after some more volunteers, there is lots going on at the Corn Exchange.

You can read how Ashley from Wallingford Tiles & Bathrooms decided to open a new showroom in the middle of the pandemic, and how he got on with that. If you'd like to try something new there's Wallingford WI, the Photographic Club and plenty of other interesting things and places to join!

It's the month of Love, Valentine's Day, so if you want to treat yourself to nice bottle of wine, Grape Minds is a good place to start and there are lots of lovely restaurants to visit too, you'll find them in the Dining out Section of the magazine.

We are still needing some new volunteers, distributors, and deliverers, so if you have a couple of hours spare each month, please get in contact with us. info@windowonwallingford.co.uk

Have a fabulous February.

Stay safe, have fun.

Naomi xx

WINDOW ON WALLINGFORD



Welcome to your
community magazine

To advertise in Window on Wallingford please
contact us on: info@windowonwallingford.co.uk

Adverts:

Must be sent in JPEG or PDF formats in their highest quality.

Advert sizes:

95 mm x 53 mm
95 mm x 110 mm
192 mm x 50 mm
210 mm x 297 mm
210 mm x 148 mm

Articles:

Supplied in MS word. Please provide any photos or images including logos separately (jpeg files) that you would like in your article.

Deadline date to submit: 7Th February 2022

Editor: Naomi Reddyhoff

info@windowonwallingford.co.uk

Marketing, Accounts & Administration: Jessica Dovey

jess@windowonwallingford.co.uk

Distribution: Naomi Reddyhoff

info@windowonwallingford.co.uk

Advertising Sales: Lesley Longden

lesley@windowonwallingford.co.uk

Feature Writer: Rosa Maitland

info@windowonwallingford.co.uk



@windowonwallingford



@window_on_wallingford

Whilst every effort is made to ensure the accuracy of information printed in the magazine, the Editor and Publisher do not accept any responsibility for the consequences of any errors that may occur. Material published in the Window on Wallingford Magazine is copyright, but normally the Editor will be pleased to grant permission for it to be reproduced, if asked on each occasion. The opinions published in this magazine are not necessarily those of the Editor, Publisher or WoW.

Adverts will continue to run unless cancelled.

WE NEED
YOU!

We are still needing some new volunteers, distributors, and deliverers, so if you have a couple of hours spare each month, please get in contact with us.

info@windowonwallingford.co.uk

**Sunshine
Painting
& Decorating**

LANCE THOMPSON
FRIENDLY RELIABLE SERVICE

For All Your Decorating Needs
Call For A Free Estimate.
07780 221950

lance.sunshine@btopenworld.com www.sunshinedecorating.co.uk

@sunshinedecorator @sunshine_pd

FULLY INSURED | CHOLSEY, OXON



Domestic Maintenance

Window Cleaning
 Conservatory Roof Cleaning
 Gutter Clean / Repair
 Patio / Driveway Clean
 Waste Removal
 Gardening
 Hedge Cutting
 Painting and Decorating
 Fencing
 and much more...

For a **FREE** quotation please call Sam on
07926 415 176

Also follow SB Domestic Maintenance on Facebook for an up to date portfolio of completed works and monthly special offers



77-78 High Street, Wallingford OX10 0BX
 admin@thebodytrainingstudio.co.uk
 01491 826682



Have you a Lasting Power of Attorney for Finance and Health?



HELP-PEN-HAND

Learn about LPAs for just £35.
 Then you can do it yourself – if daunted, I'll help you. Val Wolsey

01491 836820 | HelpPenHand@gmail.com

Shaun Guard TV & WIFI SERVICES

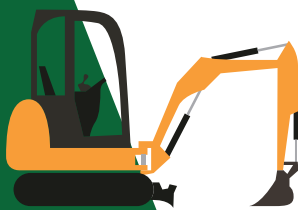
- **Aerials** - supplied, repaired & poor reception solved
- **Satellite** - Sky Q dish upgrades, discreet dish installation also foreign TV
- **Internet** - blackspots cured, data cables to your TVs / computer
- **TVs** - hung on your wall or set up & tuned

 OXFORD AERIALS

Call Wallingford
01491 833282
www.oxfordaerials.co.uk

G.R. Galliford

Graham
 07762 650 809
 01491 824583



Mini Digger
 with Operator
 Block Paving
 Driveways
 Patios
 Drop Kerbs
 Groundwork

g.galliford@btinternet.com



WATER'S EDGE

PLUMBING & HEATING

Plumbing and Heating Services

Based in Crowmarsh, fully qualified and insured.
 Contact our friendly office team for a quick response to your requirements or to arrange your **FREE QUOTE**

01491 821 626

www.watersedgeuk.co.uk | contactus@watersedgeuk.co.uk

- | | |
|------------------------|-------------------------|
| • General Plumbing | • Shower Installations |
| • Leak Repair | • Powerflushing |
| • Central Heating | • Gas Safety Services |
| • Boiler Repairs | • Underfloor Heating |
| • Boiler Installations | • Estate Agent Services |



Proud members of

Checkatrade.com
 Where reputation matters



Welcome to Wallingford WI

Wallingford WI is a friendly group of women of all ages. We meet on the first Wednesday of every month at Ridgeway Community Church on Wood Street.

A typical monthly meeting will begin with a guest speaker, followed by an opportunity to socialize over tea and biscuits. We have recently welcomed speakers on a wide range of topics, including chocolate, the Mitford sisters and emergency planning.

Outside of our monthly meetings, we offer a walking group, a craft group and a book group, and there are also informal coffee mornings for our members.

If you'd like to come along to one of our meetings as a visitor to see what we do, we'd love to meet you.

You can see details of our all upcoming meetings on our website at <https://www.wallingfordwi.co.uk/calendar>

There are over 3,800 WI members in Oxfordshire, and there are over 200,000 members in the UK. Joining Wallingford WI is a great way to make new friends locally, and you'll also be part of a powerful national organization of women.

Find out more about Wallingford WI on our website (www.wallingfordwi.co.uk/) or on Facebook (www.facebook.com/WallingfordWI)

Charlie Brampton, President, Wallingford WI

Thameside (Wallingford) u3a



In my recent news reports I had been anticipating a steady return to normality, but the Omicron variant has made us think again.

We cancelled the January coffee morning and have postponed our annual celebration lunch until the end of February. At the time of writing we shall proceed with the January Speaker Meeting. Our events in December were very well received: GreenMathew gave us a splendid musical resume of "600 Years of Christmas Music" and there was an outing to Sonning Mill for "Top Hat".

We do have a full schedule of events for this year. "The Last Supper at Pompeii" will be the talk in February, followed by "How Tropical Rainforests Work". All being well we shall have a visit to the Foundling Museum and Museum of Surgery in London this month and in March we'll go to the Cirencester Museum and old prison.

Interest Groups continue to do well and we are hoping to start one looking at Climate Change as soon as practicable, and we have already started a new Ipad group. In January we hope to hold a social evening as a "thank you" to all the volunteers and conveners without whom we would not be able to make this u3a so successful.

If you have ceased full-time work and are interested in what we do have a look at our website at thamesidewallingfordu3a.org or come to a coffee morning on the first Friday of the month at Centre 70 (10.30am-Noon). You will also be welcome at the speaker meetings at St. Mary's Church on the third Wednesday (2.00pm -3.30pm)

Neil Kelly, Deputy Chairman. Thameside (Wallingford) u3a

Henley and District Stamp Club

This month I would like to dispel one of the myths that I gather surrounds Stamp club meetings, i.e. that everyone sits round looking at each other's albums. Nothing is further from the truth. There is a speaker(s) who 'gives a display'. This is a story illustrated by Philatelic Material.

The speaker will have researched their subject, probably for many years. Their Pages, go into the club 'frames' up to 72 x A4 each half, for people to look at during the coffee break. They are interesting and entertaining. If you have an interest in Philately or Postcards or the subject do come and see for yourself.

February 9th TBA (please see website)

Feb 23rd Auction Viewing for our increasingly popular Auction which will be held on

March 9th. Visitors are welcome on both dates and the catalogue will be on the website.

Meetings are held the 2nd and 4th week of the month at Bix Village Hall at 7.30 p.m.

Visitors and new members are welcome. Further details can be obtained by phoning

01491 681739 or on our website: - www.henleyphilatelic.org.uk



Mallams
1788

Thinking of selling your artwork?



Design & Modern Art Specialist
Max Fisher, is available to give
free confidential valuations on
any piece(s) you are considering
selling at auction.

Home visits also available

Enquiries:

01865 241 358 or

max.fisher@mallams.co.uk

www.mallams.co.uk

Wallingford Tiles & Bathrooms

"Oh that's a good idea", replied my long-suffering wife, in response to me saying I wanted to open a new showroom in the middle of a pandemic. She definitely meant *"Oh that's not a good idea"*.

Never one to pass up the opportunity to do something potentially foolish we started work converting an old industrial building in to a beautiful showroom in December 2020. It was hard work. Long days removing heavy machinery, grease & grime, and replacing it all with eye-catching bathroom and tile displays.

We got there. The vision had become reality. We were ready to open first thing in January 2021! Immediately before the third national lockdown. We locked the doors. Well done me, I guess. My wife cleverly avoided saying *"told you so"*.

We made the best of lockdown. A significant positive has been developing a way of doing remote consultations, so you can start the ball rolling on getting your dream bathroom from the comfort of your own sofa.

Now we are open of course, and ever building on our reputation for great designs, beautiful and exclusive bathroom and tile ranges, as well as friendly expert service. A growing list of 5-star reviews and positive feedback is testament to the hard work we've put in, and is the reason we've been getting busier & busier.



So busy, in fact, that we've had to expand the showroom and add more stunning displays, which we've done over the Christmas & New Year break. Call in to the showroom for inspiration, or get in touch to make an appointment for a consultation with our professional designers. We can talk about what you want from your project, what is possible, and practical, and of course what will look great. We'd love to see you here.

Wallingford Tiles & Bathrooms
35 Wallingford Road, Goring,
Reading RG8 0HL

Riverside Repair Café, Saturday 19th February 10am-1pm

If you have something broken or needing repair, and would like help learning how to repair it*, you are welcome to bring it to the third Riverside Repair Café, **Saturday 19th February, 10am-1pm, in the garden of Eastgate House, 1 High Street, Wallingford.** Access is via the Green Door opposite the Boat House pub, just next to Wallingford Bridge. Volunteer repairers will be there rain or shine to help you with your repairs: Woodwork, Sewing, Sharpening, Bicycles, Small Electricals, China, etc.

Light refreshments available. The garden allows plenty of space for social distancing.

* Have something fixed that would otherwise go to landfill and learn a new skill at the same time. Please note all repairers/teachers are volunteers, so all repairs are free, but with no guarantees of success.



Winter Recitals Wallingford

On **Saturday 19 February** pianist Anita D'Attellis is joined by Meryl Davies (soprano) George White (viola) and Hannah Downing (reader) for an evening of Schubert and poetry, including the delights of the 'Arpeggione' Sonata, 'Shepherd on the Rock' and impromptus for piano.

It's at St Mary's Church with a 7.30 pm start. Tickets are £14 and we encourage you to book online at www.ticketsource.co.uk/wrw22. For more programme details go to www.anitapiano.com/wrw22, or call me Roger Morgan on 01491 837494 if you get stuck.

Proceeds are shared between Sue Ryder and St Mary's.

Wallingford Methodist Church

The popular pancakes and book sale resumes on **Saturday February 26th, 10-1pm at Wallingford Methodist Church, St Leonard's Square.**

Hundreds of secondhand books will be in the church, with pancakes in the hall, to aid social distancing.

Proceeds to young carers' charity B Free YC, and ShelterBox.

WALLINGFORD TEA & COFFEE



We roast
High Grown Coffees
and we stock Quality Teas
together with a range of
Herbal beverages and Spices
plus a wide variety of
Tea and Coffee accessories

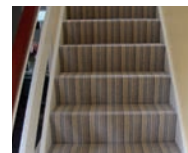
Wallingford Tea & Coffee
Company Limited
6a St. Martin's Street
Wallingford, Oxon. OX10 0AL
Telephone: 01491 836263
kitchtea@gmail.com

Masterfloors

Contract and Domestic Flooring Specialists



20 St. Martin's Street
Wallingford
Oxon. OX10 0AL
Tel: 01491 833701
Free estimates



www.masterfloorswallingford.co.uk

Manor Café at Howbery

Open: 9am-4pm, Mon-Fri

MANOR CAFÉ
at
Howbery



- ✓ Hot and cold drinks, homemade cakes: all day
- ✓ Breakfast: 9.00am - 10.30am
- ✓ Paninis, baguettes and baps: 11.00am - 2.00pm
- ✓ Hot and cold lunch options: 11.30am - 1.30pm

Order online or at service counter | Outside and indoor seating areas
Takeaway service | Beautiful grounds | Ample parking

www.howberypark.com

HOMEBASE PROPERTY

★ WHATEVER YOUR PROPERTY NEEDS ★

SALES

LETTINGS & MANAGEMENT

01491 824470 | info@hb-pm.co.uk
16B St Mary's St, Wallingford, OX10 0EW

Selling or Renting out Your Property?



- Virtual furniture & accessories styling
- Rental furniture & accessories staging
- Complete design, supply & install service

Our styled and staged properties stand out from the crowd,
meaning they sell quicker and more profitably

Call: Fiona on 07779 329352
Visit: www.fushiadesign.com
Email: fiona@fushiadesign.com



Wallingford — TILES & BATHROOMS

Tile & Bathroom Showroom



Call Now 01491 377 272
showroom@wallingfordtilesandbathrooms.co.uk

Wallingford Photographic Club

Are you interested in learning more about photography or getting creative with your smartphone or camera? Come along to Wallingford Photographic Club in 2022: we are an informal and inclusive group of photographers with a weekly programme of talks, presentations, competitions and practical sessions. It's not all about the kit- you'll learn so much from the speakers and members, and the feedback on any photos you choose to present, if you're keen to have a go; composition, use of light, camera settings and more.

We are meeting online still, but we are offering a full programme and coming up in February we have a talk from Roger Hance on switching camera type to invigorate his photography (on 10th), followed by a club competition (themed 'Street' photography) on 17th, with Chris Palmer joining us on 24th to talk about relating his emotional response to the landscape.

The club meets via Zoom every

Thursday from 7.30pm until around 9.30pm.

Please visit www.wallingfordphoto.club to find out more, or find us on **Facebook** and **Instagram**.



Wallingford Accessible Boat Club

Wheelyboat Crews Wanted!

Wallingford Accessible Boat Club seeks to recruit additional volunteers for 2022 season

The Wallingford Accessible Boat Club (WABC) is aiming to increase its capacity to enable disabled and elderly people to get out on the river during the 2022 season by recruiting more volunteers to train up as crew for its Wheelyboat WOW-one.

John Jenkins MBE, Chair of Trustees for the Wallingford based charity explained: *"We had a great end to the season last year taking over 60 people out on the river in our Wheelyboat, all trips including one or more local disabled persons, and the unique experience shared by many gave so much pleasure, we really want to do more of the same this coming season. However, we have to attract additional help for the superb group of volunteers we already have, so are embarking on a recruitment drive for additional Wheelyboat crews."*

Jenkins continued: *"A Wheelyboat crew consists of a complement of a skipper, a crewman and shoreside support all trained to RYA (Royal Yachting Association) standards. We are looking for local people ideally who have some boating experience, enjoy being out on the water, helping others and have a little spare time available. We can train the right people to the necessary standards as needed. So if anyone out there is keen to get involved in a fun charity providing a great service to a large number of people then please get in touch."*

Those interested in this opportunity should contact John Jenkins MBE at enquiries@wabc.org.uk or call **07976 297835** as soon as possible.



**WALLINGFORD
VOLUNTEER DRIVERS**

NEW YEAR – NEW NAME

We have been called Wallingford Volunteer Centre since we were set up in 1988. Over the years this has caused some confusion for prospective clients and professional bodies who want to refer people to us. Traditionally Volunteer Centres have a much wider remit than providing transport, such as recruiting volunteers for other organisations or providing help with gardening, DIY, befriending etc. Last year the trustees decided the time had come to change the name and decided on one which more accurately reflects the work we do.

WALLINGFORD VOLUNTEER DRIVERS

There are legal implications to making a change of this nature and I'm pleased to say both the Charity Commission and our Bank have now approved the new name. Rest assured that there will be no change to our work, which is to provide transport for elderly and vulnerable people in the area. During this Covid pandemic we are prioritising transport for people who need to attend medical appointments and we have Covid precautions in place for the passenger and driver.

WE NEED MORE VOLUNTEER DRIVERS.

COULD YOU HELP?

Our clients are people who do not have access to their own transport and need to attend medical appointments both locally and to the Oxford and Reading hospitals. Volunteers use their own cars and mileage allowance is paid for each journey. Parking arrangements are in place for volunteer drivers at the Oxford and Reading hospitals. Volunteers don't have to commit to a regular time or number of hours; we can work around other commitments and offer jobs to suit each person's lifestyle.

Want to know more? Contact Sylvia Wear 01491 836345 or email wallingfordvolunteerdrivers@gmail.com (preferred)

Wallingford & District Art Club

February demonstration will be given by professional artist David Johnson. The demos continue to be held online via Zoom, for now, and you are most welcome to join us on the 15th when David will be painting in acrylics.

If you would like further information on this or about any other club activities please visit our website

www.wallingfordartclub.org.uk

or contact

admin@wallingfordartclub.org.uk





**KJ MOBILE
HAIR**

*Katie Drew
Cutting Technician*

Phone/Text 07730400595
Email: kjmobilehair86@googlemail.com



Path created by teaching and learning by the Word of God (Romans 10:17, the Bible)

Join us online
Every Sunday @ 11.30
20 min message

We invite you to hear a short message from the Bible, available from the comfort of your own home.

Search Box:
Zoom ID: 495 229 376
Passcode: 116

Not able to join on Sunday - info@wca.org.uk

 [Wallingford Christians Assembly](https://www.facebook.com/WallingfordChristiansAssembly)

 @WallingfordChristiansAssembly

 @WallingfordChristiansAssembly

 Wallingford Christians Assembly

www.wallingfordchristiansassembly.org.uk


Londis

38 Sinodun Road, Wallingford Tel: 01491 837932

**Fruit & Vegetables • Newspapers • Magazines
Beers & Wines • Mobile Top-up Vouchers
Plus the National Lottery**

best value locally

Opening hours:
Mon-Sat. 6.00am-8.00pm
Sunday 6.30am-1.00pm




Illumin-Nation Ltd

5 St Peters Place, St Peters Street
Wallingford, Oxon OX10 0BG

allan.priddle@btconnect.com
www.illumin-nationltd.co.uk 01491 833505

Wallingford Methodist Church
St Leonard's Square
www.wallingfordmethodistchurch.org.uk

**Sunday Worship 10.30 am and 6.30 pm.
Junior Church and Creche at 10.30 am.
EVERYONE WELCOME**

Thursdays 10.30 - 12.00
Call in for coffee and a chat

For details of other activities, including mid-week prayer & house groups, please contact our minister, Rev. Jocelyn Bennett
Telephone: 01235 813242

Dr. A. Ratti BDS (Hons) Kings College London

ST MARY'S DENTAL PRACTICE

New patients welcome
Affordable quality private dental service
from a caring team
New maintenance plan available from Jan 2018
Call for more information
01491 825 252
www.stmarysdental.co.uk



Do you, or a loved one, require support at home?

Q1Care prides itself in offering 'high quality' home care to enable people to stay safe and independent at home. We offer as much, or as little, support as required. From *companionship, practical help*, through to *complex needs*.

Work with us?
Become a valued employee, join a team that cares and make a difference to your community. Please email: heloise.slater@q1care.co.uk for more information.



Home Care across West Berkshire & South Oxfordshire
Email us: info@q1care.co.uk / heloise.slater@q1care.co.uk
Call us: 0118 932 3865
Visit us: www.q1care.co.uk

Inspected and rated
Good
 Care Quality Commission

 Q1Care

New Year – New Adventure?



SCOUTS
Creating a Better World

Our Scout Group in Wallingford supports 120 young people by working with them to build 'skills for life'.

There are many things that help this happen and we are looking for more people who would like to play a part in the Group as volunteers.

There are several ways to get involved, for example:

- **Planning / helping at one or more annual fundraising events**
- **Admin jobs, e.g., checking utility bills or ordering badges**
- **Website admin and social media posts**
- **Roles for people to deliver and / or plan activities for Beavers, Cubs or Scouts**
- **Buildings and grounds maintenance**
- **Project management for roof refurbishment**
- **Trustee roles to help with decision making and planning for the group**

Our volunteers often choose to do something that they are already good at, or something that they want to develop a skill in; they choose a role which fits with other things they do or one where they spend time with others.

My name is Helen and I help manage the group. If you'd like to find out more, please get in touch with me.

Email : info@2ndwallingfordscouts.org.uk

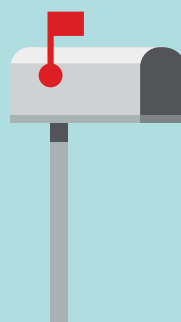
Scout Christmas Postal Service 2021

Thank you to all that kept us busy delivering your local cards.
It was great to be back up and running again and so many positive comments from volunteers, supporters and customers.

We delivered over 2500 cards raising over £1000 to be shared by the local groups involved.

A great boost to our funds and much appreciated.
As always we are challenged with some cards but we do go that extra mile to ensure they are delivered if we can. We look forward to providing the service next Christmas.

Very best wishes for 2022 from all of us at 2nd Wallingford Scouts.



British Modern Military History Society

Forthcoming Talks

Please note we will not be recording or streaming any of our live meetings or Zoom talks.

It is planned that the first of these two talks will be on Zoom, and the second in Woodcote Village Hall. This may have to change if the government guidelines on COVID restrictions change. We strongly advise checking www.bmmhs.org for the latest information.



Our **Zoom meeting on Tuesday 1 February will be at 7.30pm** – please note the change of time. The talk will be on Cold War Royal Navy Submarine Operations by Chris Munns, who served in the Submarine Service. The talk will cover the post WW2 transition to nuclear power and development of the British submarine capability, cooperation with the United States, the deterrent programme and Polaris, the growing Soviet submarine capability and threat, the development of RN submarine strategy and tactics to counter it, and the 'end' of the Cold War

On **Wednesday 9 February at 7.30pm the talk will be on SOE Jedburgh by Stephen Kippax.**

It is planned that this meeting will take place in Woodcote Village Hall. Due to COVID please note that we are likely to have a reduced number of places and also that the meeting may change to a Zoom talk at short notice.

Check out our website on www.bmmhs.org for details of all our talks, and to register for talks, email us on zoom@bmmhs.org
Thank you to everyone who has supported us and made donations to help keep us going.



singing like no one is listening

Tuneless Choirs are for those who have always been told they can't sing in tune but LOVE to do it anyway!



WALLINGFORD TUNELESS CHOIR

**Singing in person
every Thursday evening**

St Mary-le-More Church, Market Place, Wallingford, OX10 0EG
Registration starts from 7.45pm. Singing starts at 8pm.



Price: **£10** the first time you attend for all new members

(Includes registration, song book and singing session)

£7 pay as you go

or **£5** per session when booking an 8 week block



Contact us:

Tracy Noble on 07843 144737

wallingford@tunelesschoir.com

www.tunelesschoir.com/wallingford

Vacuum cleaners - repairs bags & accessories
Power washers Steam cleaners Carpet cleaners
Scrubber driers Window cleaning poles Sanders



CLEAN MACHINE

1 & 2 St. Peters Place, Wallingford OX10 0BG

01491 825600 Hire & Sales

www.machinesthatclean.com

e-mail: **info@machinesthatclean.com**



@cleanmachineltd



Find us on Facebook

/CleanMachineLtd

Daniel Hoadley Garden Services



- *Hedge Cutting + Reductions*
- *Fencing + Repairs*
- *Clearance + Tidy up*
- *Lawn Mowing + Weeds*

07498235485

C. A. HOLTOM Building Contractor

Established 1988

FOR ALL TYPES OF

Building - Extensions - Plastering - Refurbishment

Alterations - Brickwork - Patios - Drainage

Tel: 01491 651141 / 07990912966

Email: **choltom1@sky.com**

LOVE HAIR? LOVE FASHION? BE A HAIRDRESSER

Apprenticeships available now!



Call Forrester's: **01491 837 523**

Drop in: **25 High Street, Wallingford**

Forrester's4hair.com



Apprenticeships

Tom Cottrell Landscapes

EST 1974 Family Run Business



Telephone: 01491 836974

All tree aspects - Dave Cottrell

- Felling • Reducing • Reshaping
- Thinning, Removal • Pollarding
- Shrub & Tree Pruning • Dead Wood
- Removal Hedge Management
- Stump Grinding

Garden & Landscaping Services

- Turfing • Hedge & Grass Cutting
- Planting • Fencing • Patios
- General Garden Maintenance
- Garden Renovation & Construction
- Woodchip Mulch
- Seasoned Logs & Kindling Wood

www.tomcottrelllandscapes.com

Email: tomcottrelllandscapes@gmail.com

Orchard Cottage, High Road, Brightwell-cum-Sotwell, Nr Wallingford, Oxon OX10 0PS



INSPIRATION CREATION TUITION

1 Ayres Yard, Station Road, Wallingford, Oxon OX10 0JZ

T: 01491 838005 E: **keri@wallingfordflowers.co.uk**

www.wallingfordflowers.co.uk



HOWARD CHADWICK FUNERAL SERVICE



A caring family owned and managed Funeral Service

- *Dedicated Private Chapel of Rest* •
- *Golden Charter Pre-Paid Funeral Plans* •
- *Specialists in Memorial Stones and Designs* •

**33 Benson Lane, Crowmarsh Gifford,
Wallingford OX10 8ED**

Tel: 01491 825222

www.chadwicksfuneralservice.co.uk



**Golden Charter
Funeral Plans**

What's on AT THE CORN EXCHANGE, WALLINGFORD

CINEMA

All regular performances normally start at 7:30pm unless stated otherwise.
Tickets £8 for Adults and £5 for under 15s unless otherwise stated.

All events now have full seating. This is in line with the practices and guidelines elsewhere. We are asking patrons to still sanitise their hands, and of course wearing a face covering is now mandatory when inside the building. We'll continue to fog all public areas after each performance. We have recently installed new air filters as a safety precaution. We're grateful for patrons for their observation of all the Covid rules that we have implemented in the theatre. Please look out for new updates for the programme on the website www.cornexchange.org.uk.

Sunday, 30th January
Monday, 31st January
Tuesday, 1st February
Thursday, 3rd February
Friday, 4th February
Saturday, 5th February
Sunday, 6th February
Monday, 7th February
Tuesday, 8th February
Wednesday, 9th February
Friday, 11th February
Saturday, 12th February
Sunday, 13th February
Tuesday, 15th February
Wednesday, 16th February
Friday, 18th February
Sunday, 20th February
Monday, 21st February
Tuesday, 22nd February
Wednesday, 23rd February
Thursday, 24th February
Friday, 25th February
Saturday, 26th February

West Side Story
West Side Story
West Side Story
Mothering Sunday (15)
Easy Virtue (PG)
The 355 (12A)
The King's Man (15)
The King's Man (15)
The Electrical Life of Louis Wain (12A)
The Electrical Life of Louis Wain (12A)
Licorice Pizza
Licorice Pizza
Jules et Jim (12A)
Boiling Point (15)
Boiling Point (15)
Titane (18)
Nightmare Alley (15)
Nightmare Alley (15)
Nightmare Alley (15)
Parallel Mothers (15)
Parallel Mothers (15)
Belfast (12A)
Belfast (12A)

LIVE SCREENINGS

Wednesday, 2nd February, 7:30pm **Bill Murray's New Worlds**
All tickets £10

Thursday, 10th February, 7pm **NT Live: Leopoldstadt**
Tickets £15 (adults), £12.50 (seniors), £10 (under 18s)

Monday, 14th February, 7:15pm **The Royal Ballet: Romeo and Juliet**
Recorded live from the Royal Opera House, Covent Garden
Tickets £15 (adults), £12.50 (seniors), £10 (under 18s)

Thursday, 17th February, 7pm **NT Live: The Book of Dust – La Belle Sauvage**
Live broadcast from The Bridge Theatre, London, Director: Nicholas Hytner.
The Book of Dust – La Belle Sauvage by Philip Pullman, adapted by Bryony Lavery
Tickets £15 (adults), £12.50 (seniors), £10 (under 18s)

LIVE ON STAGE

Saturday, 19th December, 3pm **Didn't I use to be Simon Williams?**
Tickets £10 (talk only), £20 (premium tickets to include tea afterwards with Simon)

NEW YEAR, NEW BOOKS!

Happy 2022 from The Wallingford Bookshop and, as ever, with the new year comes new books! Fiction sees new titles from old hands and debut voices.

The Twyford Code is the second book by Janice Hallett and another one that make me wonder if she's been hanging around our lovely town. **The Appeal** was a twisty murder-mystery set in a small-town theatre group (not that I am suggesting that our very own Sinodun Players would ever encounter such a thing!) and now nearby Twyford. 40 years ago, a boy picks up a copy of a famous children's book and finds it covered in strange notes and markings. Taking it to his teacher, Miss Iles, he unwittingly sets about a chain of events leading to her disappearance... This is a twisty novel worthy of our own Agatha Christie!

Also local is Stacey Halls, who has just been named in the Women's Prize under-35 spotlight. **Her new novel, Mrs England**, is her best yet, set in an Edwardian household fracturing around its enigmatic matriarch.

Rosie Andrews debut novel, Leviathan, set in 1643 Norfolk where something is stirring, and superstition threatens to take hold. It has one of the most beautiful covers I have ever seen.

Brilliant nature writing and non-fiction continues to be published and as the year slowly becomes warmer and lighter **Seed to Dust by Marc Hamer** and **Land by Simon Winchester** are perfect. One of the quirky books I am looking forward to is **Worn: A People's History of Clothing by Sofi Thanhauser** – there has been an expansion in social history writing looking at our past in unusual ways and this is a very different way of viewing our relationship with clothing and fashion through time.

Much more my level is **A Duck Called Brian by Al Murphy** about a duck and his missing best friend, while I hope you have not had anything like **The Worst Day Ever by local author James Bishop** which involves aliens!

Happy reading!

Wallingford Bookshop 10c St Martin's Street, OX10 0AL

Winterbrook Garden Services Ltd

Garden Design, Construction & Maintenance
Fencing
Patios
Full Pruning Service
Tel: 01491 838189
Mobile: 0775 36 36 333
winterbrookgs@gmail.com



Winterbrook Garden Nurseries

High Road, Brightwell-cum-Sotwell,
OX10 0PS

Independent plant nursery
specialising in herbaceous
perennials
& garden curios

www.winterbrookgardennurseries.com

[f @winterbrookgardennurseries](https://www.facebook.com/winterbrookgardennurseries) [i](https://www.instagram.com/winterbrookgardennurseries)

Paddocks pre-School

Paddocks Pre-school
Paddock Road
Wallingford
OX10 9LT
www.paddockspreschool.com

A friendly preschool environment offering a wide range:

- Flexible sessions for 2 – 5 year olds
- Universal 15 hours funding for 2, 3 & 4 year olds
- Extended 30 hours funding for 3 & 4 year olds
- Large Garden & Forest School
- After school care available
- Holiday play schemes for 2-8 year olds



For more information or to arrange a visit, please call **01491 825333** Charity Number: 1001964
or email info@paddockspreschool.com



Skip Hire Caged Tipper Waste Management

☎ **01235 760555**

✉ info@asvogel.co.uk

🌐 www.asvogel.co.uk

[Mention Window on Wallingford when you call]



FITZCOUNT LAND

Wallingford based Land, Planning &
Property Development Specialists

Contact adam@fitzcountland.co.uk 07493170307

WEPS

WALLINGFORD ELECTRICAL & PLUMBING SUPPLIES

**OPEN TO THE
TRADE & PUBLIC**

☎ **01491 827825**

✉ SALES@WEPS.ORG.UK

UNIT 1 MOSES WINTER WAY

JIM PINK (WALLINGFORD) LTD

The Friendly Family Firm
Serving the Motorist since 1960

NEW & USED CAR SALES • SERVICING ALL MAKES
MOT CENTRE • AIR CONDITIONING SPECIALISTS
TYRES • BATTERIES • EXHAUSTS
CAR SALES • SERVICE CENTRE

Wood Street Garage, Wood Street, Wallingford

01491 836017

01491 836022

07342 630396

www.jimpink.co.uk

info@jimpink.co.uk



1960-2021

61
Years



Wallingford Tyres & Exhausts



**FRIENDLY, PROFESSIONAL SERVICE
AT COMPETITIVE RATES**

PHONE: **(01491) 824145** FOR A QUOTE

or call in at: AYRES YARD, STATION ROAD,
WALLINGFORD, OXON.

OR BY APPOINTMENT OUTSIDE WORKING HOURS

Mon.-Fri. 8.30 a.m.-5.30 p.m. Sat. 8.30 a.m.-1.00 p.m.

(Just past the Esso Garage on the way to Didcot)



Crosby Engineering

Latest Diagnostic Software

All Makes & Models Serviced & Repaired

Laser 4 Wheel Alignment

MOT

Air Conditioning servicing

Free Local collection

Audi BMW Mercedes VW Specialist

Family Run Business In Wallingford Since 1980

01491 834544

Unit F The Croft

Whiteley Road

Hithercroft Ind Est

Wallingford

Ox109rg



**CHEQUERS
GARAGE**

Fullers Road, Aston Tirrold,
Oxfordshire OX11 9EN

info@chequers-garagedidcot.co.uk
www.chequers-garagedidcot.co.uk

At Chequers Garage we look after our customers as well as their cars. That's why we have courtesy cars, offer local collection and delivery, explain your invoice in plain English and every car is washed before it is returned - not only will your car run well, it will look great too!

- MOT**
- SERVICE**
- TYRES**
- AIR CON**



the Good Garage Scheme

Call today on 01235 850347

**Only £895 for
a fully fitted
electric door.**

Gotta get a Garolla.



Garolla garage doors are strong and solidly built. They're made to measure in our own UK factories. The electric Garolla door rolls up vertically taking up only 8 inches inside your garage. Our expert installers will fit your new door and take away the old one so there's no mess.

Give us a call today and we'll come and measure up completely Free.

GAROLLA
ROLLER
SHUTTER
DOORS



GOTTA GET A GAROLLA

NOW ONLY

£895 WAS £1,354
INC VAT

WHAT'S INCLUDED WITH EVERY DOOR:

- FREE EXPERT MEASURING & FITTING
- TWO REMOTE CONTROLS
- ACOUSTIC & THERMAL INSULATION
- AVAILABLE IN 21 COLOURS
- FREE DISPOSAL OF YOUR OLD DOOR

Offer valid for openings up to
2.6m wide & inc: 2 remote
controls, 55mm white slats,
internal manual override.

CALL US TODAY ON
01235 280 072

MOBILE **07537 149 128**

www.garolla.co.uk

Slimming World
taste
the
freedom

WALLINGFORD & CHOLSEY

#SWtastethefreedom



slimmingworld.co.uk

new for
2022
super-charged
member
pack!

FREE

membership when
you buy a 12-week
countdown course

Monday Evenings
with Claire:
6pm & 7:30pm
Centre 70, Kinecroft
Wallingford
07900988199

Wednesday Mornings
with Bev:
9am & 10:30am
Centre 70, Kinecroft
Wallingford
07895059079

Wednesday Evenings
with Nicola:
4pm, 5:30pm & 7pm
Centre 70, Kinecroft
Wallingford
07861672320

Saturday Mornings
with Louise:
9am
Cholsey Pavilion
Cholsey
07368650463



THE WALLINGFORD BOOKSHOP
10C ST. MARTIN'S STREET
WALLINGFORD, OXFORDSHIRE OX10 0AL
Telephone / Fax: 01491 834383
Email: books@wallingfordbookshop.com

We offer friendly informed assistance and an excellent range of books, audios and fine art stationery.

Many titles not stocked can be obtained within 24 hours.

A.G.CURTAIN DESIGN LTD

www.agcurtaindesign.com



Made Exclusively For Your Home
Bespoke Curtains & Soft Furnishings

- 15 years serving clients in South Oxfordshire
- 1,000's of design lead fabrics to choose from
- Expert making and fitting service
- Curtains & Soft Furnishings
- Poles – tracks – finials & tie backs
- Cushions - lamp shades & headboards
- Made to order promptly & efficiently
- Free measure & quotation service

BEAUTIFUL
CURTAINS, BLINDS
&
SOFT FURNISHINGS
01491 834238



Blinds & Shutters
Modern & Contemporary

- Wooden & Venetian
- Roller & Vertical
- Perfect fit & Faux Wood
- Made to fit your windows
- Inside & Outside recess fit
- Manual & Remote controls
- For all rooms in your home or business

VISIT OUR RETAIL STORE AT 3 ST, PETERS PLACE, WALLINGFORD, OXON. OX10 0BG

SHOE
REPAIRS

ENGRAVING

KEY
CUTTING



FEET FIRST

21 St. Mary's Street, Wallingford
Contact Gary on: 01491 825224



WATCHSTRAPS
BATTERIES

STITCHING
REPAIRS

TRAVEL GOODS
LUGGAGE

Benson Angling Centre

Your Friendly Local Angling Centre

Unit 3, Benson Waterfront,
Benson Wallingford OX10 6SJ

Tel: 01491 838288

Email: dibby1949@yahoo.co.uk



Stockists of Drennan E.S.P. Dynamite Baits, Sticky Baits, Baitech, Dead Baits and Live Baits Available. We buy and sell all used angling items



**St Mary's & St Leonard's
Wallingford**
open to God, open to all

YouTube



8am St Leonard – Holy Communion

10am St Mary-le-More – Parish Communion with Children's Church, All Age Worship or Family Service (also live-streamed)

6.30pm St Leonard – Evensong

www.marylemore.co.uk

Team Rector: The Revd David Rice Tel: 01491 202188

WALLINGFORD RADIO
For the community of Wallingford Oxfordshire

Turn on, tune in

Listen online at

<https://wallingfordradio.co.uk>



**Mum and baby/toddler fitness classes
running in Cumnor, Didcot,
Wallingford & Oxford**

Contact Jen to book your free trial

www.mumtomumfitness.com

07771 848387 | jen@mumtomumfitness.com
mumtomumfitness | @mumtomumfitness

The
Little
Artichoke

Experienced local chef available
for small intimate events from
BBQs & buffets to fine dining
dinner parties

- We specialise in shellfish for you to finish at home, we have an extensive menu & weekly specials
- We are now taking orders for Christmas seafood for you to enjoy with your festive menus

Contact Jason or visit website for further information

07960 974057 | thelittleartichoke@outlook.com | www.thelittleartichoke.co.uk

Wallingford Wine of the Month

The wind is chill, the skies are grey, and the food we're all craving is hearty and substantial. Comfort is often cold as we wait for the first signs of spring, but on a crisp, chill evening there is still joy to be had. This month, I'm delighted to highlight the Oh! Syrah, a little gem of a red that straddles the old and new worlds, and fills every glass with intense and warming red fruit.

Syrah is a magnificent grape – so good they named it twice. In France it's always Syrah, in Australia it's always Shiraz, and the rest of the world chooses which style they'd like to emulate. The icons of the Northern Rhone, such as Hermitage, Côte-Rôtie and St-Joseph, are all wines of elegance and authority, whose Syrah is meaty, lean and powerful, with a precise edge of clean hedgerow fruit. By contrast, the Shiraz of the Barossa Valley in Australia is jammy, rich and turbo-charged; hedonistically fruity and as subtle as Shane Warne dissecting an Englishman's forward defensive. An Alfa Romeo versus a Mustang, a Coquille-St-Jacques versus a shrimp from the barbie. The metaphors are easy but satisfying, and so is the wine.

So why choose a South African example? Well, this really is one of the best wines in the shop, and it takes a little from each extreme to produce a bottle of finesse and exuberance that is a constant joy to share with people. We're lucky to work with a producer who has planted Syrah in the unusually cool area of Elgin on the southern tip of the continent, and the combination of long, sunny days and sea-cooled nights gives a real 'best of both worlds' character to this wine. The sunshine is shown in the intensity of its flavours, and the nose is one of concentrated red fruit, with just a hint of toast from the barrel. On the finish, the old-world elegance comes to the fore, and the lingering flavour is nuanced and delicious, begging for one more sip. It's deep, silky and wonderful, perfect with big umami flavours, or just sipping by the fire.

This wine has already established itself as a favourite of customers in Wallingford, and at £14.99 it's one of those bargains that tastes a lot more expensive than it is. Have a lovely month, and I hope you love the wine as much as I do. Cheers!

Michael Jelley is the Director of Grape Minds Wallingford

Wine Name: Oh! Syrah

Producer: Oneiric Wines

Grapes: Syrah

Region: Elgin, South Africa

Exclusive Price: £14.99/bottle until the next issue.

Just mention Window on Wallingford in store!



Introducing Coffee Culture at the Royal Standard

If you have got small children, you know how difficult it is to get some time to yourself, which is why Wallingford's latest coffee shop may be of interest to you.

Coffee Culture, located in the restaurant area of the **Royal Standard on St Marys Street**, has a soft play area that is perfect for under fives allowing them to play and interact with other children.

Meanwhile you can relax, enjoy a hot or cold drink and choose from their delicious selection of freshly prepared food, which includes a number of healthy eating, vegetarian and gluten-free snacks, treats, sandwiches and light meals.

In addition, they will be putting on a variety of activities from craft days to painting, designed to keep you – and your children – entertained.

Coffee Culture is open Tuesday to Friday, 9.30 til 4pm.

For more information, follow them on Facebook or drop in and speak to Rachel and Lisa. Alternatively, call them on 01491 599105.



Café Delorme

Fresh ground coffee and drinks

Doughnuts and pastries baked fresh daily

Takeaway menus with weekly specials Wed - Sat to order

Dining In from end June

Authentic French Bistro Evenings one Friday each month

f Book on Facebook or 01491 651088

Café Delorme, 2 The Pound, Cholsey OX10 9NS



Red Lion

Brightwell cum Sotwell

Corinne & Mouse Welcome you.

Pop in and Say Hello

The Street, Brightwell-cum-Sotwell, Oxfordshire OX10 0RT

01491 837 373

www.redlionbrightwell.co.uk

FB: RedLionBrightwellcumSotwell

Avanti ITALIAN

RESTAURANT



Dining In
Takeaway
Delivery Service

Tuesday to Saturday

Order online
avantiitalian.com
or call 01491835500



EST. 1995

Mr & Mrs Park's

FAMILY BUTCHERS

High welfare local produce

Knowledgeable and friendly service

A great range of local cheese, wines and much much more.

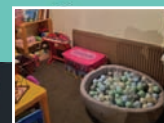
Check out our website or follow us on Facebook or Instagram to learn more.

5 The Pound, Cholsey, Wallingford, Oxfordshire, OX10 9NS

01491 651300 • info@mrandsrspark.co.uk • www.mrandmrspark.co.uk

COFFEE CULTURE

Where children can play and you can relax



GOOD COFFEE | SOFT PLAY AREA | GREAT FOOD

OPEN TUESDAY TO FRIDAY 9.30AM - 3PM

Royal Standard · 32 St Marys St · Wallingford OX10 0ET

GREAT FOOD, FINE LOCAL ALES AND A
WARM WELCOME AWAIT AT THE ROYAL
STANDARD PUB, ALONG WITH SKY AND
BT SPORTS SO YOU CAN FOLLOW ALL THE
LATEST SPORTS ACTION

**PROBABLY THE BEST
SUNDAY ROAST IN TOWN!**

CALL 01491 599105

ROYALSTANDARDWALLINGFORD.CO.UK



**ROYAL
STANDARD**

WALLINGFORD'S ROYAL: ANYTHING BUT STANDARD!

SUNDAY ROAST

SHILLINGFORD BRIDGE



2-Course Roast

Join us on the River Thames at Shillingford
Bridge Hotel!



@shillingfordbridgehotel

Shillingford Bridge Hotel,
Wallingford, OX10 8LZ

E: reservations@shillingfordbridge.co.uk

T: 01865 858567

**£19.50
per person**



Shellfish Com
Restaurant & Bar

28 High Street
Wallingford

www.shellfishcom.co.uk

01491 832 807

wallingford@shellfishcom.co.uk



LEARN, GROW, FLOURISH

Mary Mountstephen MA (SEN) MA (RES)

- Specialist in Learning Differences in Children Y1-Y8
 - Former Primary SENCO
 - Free initial consultation
- Different levels of assessment to suit individual needs
 - Individual coaching/ tutoring available
- Multi-sensory approaches that stimulate learning progress
 - Personalised support packs
 - Expert at 'solving the learning puzzle'
 - Building confidence through success



e:kcsmary1@gmail.com
m: 07813899348
www.marymountstephen.com



Live well,
your way
with Care at Home

Your home is where you feel the most comfortable and the happiest. It is the place you know the best. If you want to stay living comfortably at home, Home Instead can help make that possible.

Home Care is Safe Care

- Home Help • Companionship
- Personal Care • Dementia Care
- Live-In Care

Maidenhead, Henley & Wallingford
01865 364 418
www.homeinstead.co.uk/wallingford

"Want to join our amazing team?
Get in touch - we are recruiting now!"



Stoves & Fireplace Sales

- Solid fuel, gas or electric fires
- Installation
- Chimney sweeping
- Woodburner servicing
- Chimney lining
- HETAS registered



Visit our showroom at
45 Prospect Street
Caversham RG4 8JB
Tel: 0118 9463060

www.fireplacemagic.co.uk



THE POSITIVE
OUTCOMES GROUP

Electrical

Plumbing

Fire and Security

Call: 01491 835875

Email - reception@groupga.co.uk

Unit H Moses Winter Way, Wallingford, OX10 9FE



PC TECHNICIANS

WINDOWS | APPLE | ANDROID

WHAT YOU'LL FIND IN YOUR NEW COMPUTER SERVICE CENTRE:

One-to-One Tutorials

Our one-to-one tutorials are designed to help you learn a variety of topics at your own pace.

Repairs & Installation

We offer fixed price services instore, onsite, and over the Internet via remote access. We cover everything from virus removal to data transfer.

Tech Experts

Meet our tech experts who are available to answer your questions and offer advice on the latest tech without the tech jargon.

Click & Collect

100's of handpicked products available for same day click & collect. Everything from cables, mice and keyboards to hard drives and printers.

HOW TO FIND US



Unit B, The Croft, Whiteley Road,
Wallingford, OX10 9RG

OPEN Mon-Fri 8:30am-5:30pm

WWW.THEPCTECHNICIANS.CO.UK TEL: 01491 825449

NOW OPEN

FOLLOW US:



STARTING
FINAL PLACES
FOR RECEPTION
SEP 2021



Come and join us!

Come and join us at Reception Open Morning Friday 11 February

Specialist teaching, excellent facilities and outstanding pastoral care.



CRANFORD HOUSE

Excellence in Independent Education
for Boys and Girls aged 3 - 18
www.cranfordhouse.net

ADP FLOORING

Adrian Pitson

Carpet, Vinyl, Wood, LVT Flooring expertly fitted

• Over 30 years experience • Supply & fit • Professional & reliable

adpflooring@hotmail.com • 07528 210 562

**WE NEED
YOU!**

We are still needing some new volunteers, distributors, and deliverers, so if you have a couple of hours spare each month, please get in contact with us.

info@windowonwallingford.co.uk



HAVE TROUBLE WITH YOUR TREES?

NEED SOME HELP? ASK THE EXPERTS

- Tree removal
- Tree thinning
- Stump grinding
- Hedge trimming
- Tree pruning
- Tree felling
- Landscaping
- Fencing

We are city & guilds nptc qualified and insured
you can feel safe dealing with us.

Call now to see how we can help Free no obligation quote

1st CLASS TREE SURGEONS

E. quote@firstclasstreesurgeons.co.uk

T. 07889 881 525
firstclasstreesurgeons.co.uk



Experienced RHS Trained Gardener. I offer a specialist garden maintenance service, to include the basic services of mowing, pruning and weeding. Specialising in the overarching care and vision to keep the garden looking lively throughout the year.

Please call Dan on 07910 001 288

Quakers

Are you interested in exploring a different spiritual path?
As Quakers we help each other as we live our lives,
guided by experience rather than doctrine.

Come and find out

Sundays 10.30 am

Quaker Meeting House, 13 Castle Street, Wallingford

Website: midthamesquakers.org.uk



Car Care Centre

servicing...batteries...tyres...fantastic value

Bushells Business Park, Lester Way,
Wallingford Oxon OX10 9DD

www.haynes-car-care.co.uk

- All Makes Servicing and MOT's
- Parts & Accessories
- Air Con Re-Gas
- Courtesy Car
- Batteries & Tyres
- 4 Wheel Laser Tracking



Proud Sponsors of Wallingford Vehicle Rally & BunkFest

01491 836 097