

WOW



The
Little
Artichoke



Private Local Chef

Available for event catering, from canapes & fine dining to BBQs & buffets

Crockery, cutlery & BBQ hire available

Contact Jason or Claire or visit website for further information
07960 974057 | thelittleartichoke@outlook.com | www.thelittleartichoke.co.uk

C. A. HOLTOM Building Contractor

Established 1988

FOR ALL TYPES OF

Building – Extensions – Plastering – Refurbishment
Alterations – Brickwork – Patios – Drainage

Tel: 01491 651141 / 07990912966

Email: choltom1@sky.com



Illumin-Nation Ltd

5 St Peters Place, St Peters Street
Wallingford, Oxon OX10 0BG

allan.priddle@btconnect.com
www.illumin-nationltd.co.uk 01491 833505



Fireplace Magic

Stoves & Fireplace Sales

- Solid fuel, gas or electric fires
- Installation
- Chimney sweeping
- Woodburner servicing
- Chimney lining
- HETAS registered

Visit our showroom at
45 Prospect Street
Caversham RG4 8JB
Tel: 0118 9463060

www.fireplacemagic.co.uk

Masterfloors

Contract and Domestic Flooring Specialists



20 St. Martin's Street
Wallingford
Oxon. OX10 0AL
Tel: 01491 833701
Free estimates



www.masterfloorswallingford.co.uk



HOMEBASE

PROPERTY

★ WHATEVER YOUR PROPERTY NEEDS ★

SALES

LETTINGS & MANAGEMENT

01491 824470 | info@hb-pm.co.uk
16B St Mary's St, Wallingford, OX10 0EW



Sunshine Painting & Decorating

LANCE THOMPSON

FRIENDLY RELIABLE SERVICE

For All Your Decorating Needs
Call For A Free Estimate.
07780 221950

lance.sunshine@btoopenworld.com www.sunshinedecorating.co.uk

@sunshinedecorator @sunshine_pd

FULLY INSURED | CHOLSEY, OXON



SB

Domestic Maintenance

- Window Cleaning
- Conservatory Roof Cleaning
- Gutter Clean / Repair
- Patio / Driveway Clean
- Waste Removal
- Gardening
- Hedge Cutting
- Painting and Decorating
- Fencing
- and much more...

For a FREE quotation please call Sam on
07926 415 176

Also follow SB Domestic Maintenance on Facebook for an up to date portolio of completed works and monthly special offers



WOW

WINDOW ON WALLINGFORD



WINDOW ON WALLINGFORD

To advertise in Window on Wallingford please contact us on: info@windowonwallingford.co.uk

Adverts:

Must be sent in JPEG or PDF formats in their highest quality.

Advert sizes:

- 95 mm x 53 mm
- 95 mm x 110 mm
- 192 mm x 50 mm
- 210 mm x 297 mm
- 210 mm x 148 mm

Articles:

Supplied in MS word. Please provide any photos or images including logos separately (jpeg files) that you would like in your article.

Deadline date to submit: 8th July

Editor: Naomi Reddyhoff

info@windowonwallingford.co.uk

Marketing, Accounts & Administration: Jessica Dovey

jess@windowonwallingford.co.uk

Distribution: Naomi Reddyhoff

info@windowonwallingford.co.uk

Advertising Sales: Lesley Longden

lesley@windowonwallingford.co.uk

Magazine Design: Chris Wright

Cover Photo: Steve Holder



Picture from Bean & Brew by Charlie Light

@windowonwallingford

@window_on_wallingford

Whilst every effort is made to ensure the accuracy of information printed in the magazine, the Editor and Publisher do not accept any responsibility for the consequences of any errors that may occur. Material published in the Window on Wallingford Magazine is copyright, but normally the Editor will be pleased to grant permission for it to be reproduced, if asked on each occasion. The opinions published in this magazine are not necessarily those of the Editor, Publisher or WoW.

Adverts will continue to run unless cancelled.

Hi Everybody

Wallingford looked absolutely stunning for the Jubilee Weekend. There was lots going on and it seems that most people had a great time.

July is here, the school holidays are coming up, summer vacations and trips out. If you need a library book look at the article for home delivery, Wallingford book shop has some great summer reads. Junior Friday Club, Wallingford Museum, the Summer Reading Challenge. Lots for you and your family to Do over the holidays.

To help you keep trim Slimming World has given a lovely recipe, and don't forget to look in our dining out section for some lovely local places to eat.

Fancy a trip to France? Domaine de Pouroutounat in the South of France sounds like to perfect destination. Lesley went and has written about her visit, page 25.

The Sinodun Players will be performing, Bedroom Farce, by Alan Ayckbourn, directed by Erica Harley on 16th July, tickets from the Corn Exchange, as well as some great movies.

So have a most fantastic July, the start of Summer.
See you next month.

Stay safe, have fun

Naomi x

We Let...

...You Relax

Trusted to let and manage properties from our Wallingford office since 1992.

01491 824000 lettings@winterbookestates.co.uk

AASVOGEL
 Skip Hire
**Caged Tipper
 Waste Management**

01235 760555

info@aasvogel.co.uk www.aasvogel.co.uk

[Mention Window on Wallingford when you call]

GA

Electrical
 Plumbing
 Fire and Security

Call: 01491 835875

Email - reception@groupga.co.uk
 Unit H Moses Winter Way, Wallingford, OX10 9FE

**THE POSITIVE
 OUTCOMES GROUP**

ADP FLOORING

Adrian Pitson

Carpet, Vinyl, Wood, LVT Flooring expertly fitted

• Over 30 years experience • Supply & fit • Professional & reliable

adpflooring@hotmail.com • 07528 210 562

**250 varieties and colours
 of basket & patio plants
 all grown on the nursery**

**Purely
 Plants**

Seasonal Opening: April-July & September-November
 7 days a week - See website for details

HANGING BASKET
 SPECIALISTS
 BEDDING &
 CONTAINER PLANTS
 VEGETABLES
 & HERBS
 PERENNIALS,
 CLIMBERS & SHRUBS

e: andy@purelyplants.co.uk 01491 833 831 w: www.purelyplants.co.uk
 Purely Plants Nursery, 142a Wantage Road, Wallingford, Oxfordshire OX10 0LU

CARE DRY CLEANERS

10B St. Martins Street, Wallingford OX10 0AL
 Tel: 01491 837318

• Suede Leather • Alterations • Press Services • Wedding Dresses •
 • Settee Covers • Rugs • Laundry • Duvets • Curtains

Wallingford Methodist Church
 St Leonard's Square, OX10 8AS

**Sunday Worship 10.30 am
 EVERYONE WELCOME**

The resumption of other activities is planned
 Please check the notice boards outside the church for details
 or the website www.wallingfordmethodistchurch.org.uk
 Contact our minister, Rev. Jocelyn Bennett, with any enquiries.

Tel 01235 813242 email jocelynbennett@methodist.org.uk

Vacuum cleaners - repairs bags & accessories
 Power washers Steam cleaners Carpet cleaners
 Scrubber driers Window cleaning poles Sanders

CLEAN MACHINE

1 & 2 St. Peters Place, Wallingford OX10 0BG
01491 825600 Hire & Sales
www.machineshatclean.com
 e-mail: info@machineshatclean.com

@cleanmachineltd Facebook: /CleanMachineLtd

**A.G.CURTAIN
 DESIGN LTD**

www.agcurtaindesign.com

BEAUTIFUL
 CURTAINS, BLINDS
 &
 SOFT FURNISHINGS
 01491 834238

Made Exclusively For Your Home
 Bespoke Curtains & Soft Furnishings

Blinds & Shutters
 Modern & Contemporary

- 15 years serving clients in South Oxfordshire
- 1,000's of design lead fabrics to choose from
- Expert making and fitting service
- Curtains & Soft Furnishings
- Poles - tracks - finials & tie backs
- Cushions - lamp shades & headboards
- Made to order promptly & efficiently
- Free measure & quotation service

- Wooden & Venetian
- Roller & Vertical
- Perfect fit & Faux Wood
- Made to fit your windows
- Inside & Outside recess fit
- Manual & Remote controls
- For all rooms in your home or business

VISIT OUR RETAIL STORE AT 3 ST, PETERS PLACE, WALLINGFORD, OXON. OX10 0BG

WALLINGFORD RADIO
 For the community of South Oxfordshire

107.3FM

Turn on, tune in
 Listen online at
<https://wallingfordradio.co.uk>

OX10 Community CENTRE

In these troubled times IMAGINE...
A meeting space run by the community for the community



Many thanks to all those who filled in our questionnaire last month.

Here are some of the highlights:

- 202 people returned the survey by the end of May.
- Over 85% of respondents have noticed the number of empty buildings in Wallingford town centre and the loss of indoor community public space in recent years.
- Almost 72% of respondents feel they would benefit from public access to resources such as meeting rooms, community group space, networking events, adult education classes, practical skills courses, display spaces, storage facilities and hot desks etc.
- 16 respondents (8%) think we already have too many community spaces available in the daytime, evenings and weekends. 67% disagreed with this statement.
- 71% agreed it would be important to them that any community space would be run in an environmentally sustainable way.
- 50% said they would like to share their ideas about the development of a community centre in Wallingford.
- 142 respondents (70%) told us what they would like to see happening in such a new community space.

We are still analysing the data. The themes mentioned most often are adult education, community building, activities for children and young people, creative classes and workshops. Also, somewhere to meet others where you don't have to spend money.

We have registered as a Community Benefit Society (no. 8866) and are considering the possibility of purchasing the freehold (which includes the ground floor and basement), of Number 2, Market Place (formerly Barclays). A freehold would allow us to develop a long-term asset for the community, which can always be rented out to generate funds for other community projects. Buying a property is daunting, but we have only to look at the Corn Exchange to see what can be achieved by committed volunteers.

The ground floor has a large, fully accessible floor area. There are also new toilets, one spacious and well-laid out for wheelchair and pushchair access. The offices with glass walls are still in place, and could be rented for small retail or start-up businesses. Several people have shown an interest in using the basement space. The position could not be more central. This is what we are working towards, but if we lose this property we shall be better placed for a fast response on the next suitable opportunity.

The present owner allowed us to open the space on Saturday 4th June 2022 so that people could come and see what we are talking about. We think approximately 200 people came to have a look and most agreed the space is larger than they had imagined and has multiple interesting possibilities. We collected more ideas about how the space might be used.

Many thanks to Maff Potts and Camerados for helping us set up a public living room, St John the Evangelist for allowing us to do so in their courtyard, St Mary's Church and Just Trading for loan of tables and Purely Plants for the plants and flowers. Pastries were generously donated by The Old Post Office and Mollie's Cafe. We look forward to sharing the photographs taken by The Wallingford Project in due course.

Some people asked who we are. The short answer is we are a group of local residents, who love Wallingford, who live in the area and are aged from 17 to 70. If you would like to know more about us, and our thoughts and plans, please get in touch so that we can email you our Project Summary.

Thanks for reading

 OX10CommunityCentre@outlook.com

 [OX10Community](#)

 [OX10CommunityCentre](#)

If you have any skills in the following areas: website design and management, IT support, practical skills, fundraising and video editing, we would be delighted to hear from you.

You may not be ready to become a member yet, but ad-hoc support is always welcome and a great way to start building trust and relationships with the core team.



From
£895*
for a fully
fitted electric
garage door.

WAS £1,354 INCLUDING VAT.

Gotta get a Garolla.



Garolla garage doors are expertly made to measure in our own UK factories, they're strong and solidly built. The electric Garolla door rolls up vertically, taking up only 8 inches inside your garage, maximising valuable space. Our expert local installers will fit your new door and they'll take away the old one too, so there's no mess.

Give us a call today and we'll come and measure up **FREE** of charge.

GAROLLA
ROLLER
SHUTTER
DOORS



www.garolla.co.uk

CALL US TODAY ON:

01235 280 072

MOBILE:

07537 149 128

LINES OPEN 7 DAYS A WEEK

*Offer valid for openings up to 2.4m wide & including 2 remote controls, 55mm white slats, internal manual override.

When your
computer
sotps mkanig
sense...

PC TECHNICIANS

WINDOWS | APPLE | ANDROID

Call: 01491 825449

Click: www.thepctechnicians.co.uk

Visit: Unit B, The Croft, Whiteley Road, Wallingford, OX10 9RG

WHAT'S ON!

Wallingford Chamber Music's summer season now in full swing

There are 2 concerts in July - first up are **Cara Berridge (cello) and Elizabeth Burgess (piano) on 9 July**. Regulars will remember Cara playing with the popular Sacconi Quartet in May. They give us cello sonatas by Beethoven, Chopin and Debussy, and a couple of lighter pieces by Fauré. Then on 30 July we welcome the up-and-coming Echéa Quartet with a classic string quartet programme by Haydn and Beethoven along with Schubert's Quartettsatz. Both these concerts are selling well, so don't delay and get your tickets now. Buy online from our website www.wcm.org.uk. or for any queries email tickets@wcm.org.uk or phone Jules on **07968 703079**. We have a lovely brochure which you can pick up from the Town Information Centre or libraries. Tickets are £18. All concerts start at 8pm. There are extra benefits this year if you become a Friend, notably seat reservations - for this give me a call, **Roger Morgan on 01491 837494**.

St. Mary's Church, Aldworth - Afternoon Teas

Will start on **6th July and then every Wednesday in July, August & September. 2.30 – 4.30 p.m.** Delicious homemade cakes in the company of The Aldworth Giants. For further details and to book groups contact: **Gill Wilding 01635 578624 or gillwilding@hotmail.com**

Wallingford Allotments and Gardens Society (WAGS)

Saturday 11th Sept it's The Autumn Show!

We are seeking more exhibitors from our local area for the following competitive categories; Baking, Photography, Home-Grown Vegetables, Fruits, Plants as well as Arts and Crafts and Floristry.

The event is open to non-members and members, all ages and abilities are encouraged to have a go! Our external judges from the local community will be awarding prizes and trophies.

From early July, the Show Schedule and Entry Form will be available here: www.wags-wallingford.com/autumn-show. All Show enquiries to our Show Secretary, Sandra Halstead s.halstead2@btinternet.com tel **01491 836527** or message us on www.facebook.com/WallingfordAGS

If not taking part as an exhibitor, come along **2pm-4pm 11th Sept 2022**, entry is free of charge with all proceeds from refreshments and the raffle going towards the running of the event. **Centre 70, off Goldsmith's Lane**

Wallingford & District Art Club

Join Wallingford & District Art club on July 19th for an online demo by professional artist and tutor Jake Winkle. Jake is based in Dorset and uses watercolour in a bold and expressive style to bring life and energy to his paintings. He specialises in painting animals which will be the subject for this evening's session. He is inspired by life and movement, a reflection of the world around him that he then captures so beautifully in his work.

So, if you would like to watch an inspiring tutorial via **Zoom at 7.30pm on July 19th**, please contact admin@wallingfordartclub.org.uk For further information on the club's activities and how to become a full member, please visit our website www.wallingfordartclub.org.uk

Concerts@Cholsey

After two sell-out events, join us again at the **Cholsey Pavilion** for a relaxed and uplifting evening on **Sunday 10th July, when Simon Mayor and Hilary James** will delight you, our discerning audience, with a mixture of folk, blues, swing and classical showstoppers. Simon is one of this country's finest exponents of the mandolin, occasionally demonstrating Grappelli-like dexterity on the violin, while Hilary makes light work of many musical styles with her crystal-clear voice, as well as playing a mean mando-bass and guitar. Don't miss them; in fact, you should book early.

Doors open at 7.00 for 7.45 start and there is a well-stocked real-ale bar. **Tickets are £10 in advance or £12 at the door** and are now on sale from concerts@cholsey.com, or phone **01491 652295** for personal service. You can also ask to be added to the **Concerts@Cholsey** emailing list, which will send you news of future Cholsey concerts and many other live musical events within easy reach.

British Modern Military History Society

Forthcoming Talks - Please note we will not be recording or streaming any of our live meetings or Zoom talks.

The first of our July talks, on Tuesday 5 July at 7.30pm, will be on The Finnish Soviet Winter War 1939-1940 by David Caldwell-Evans. This talk will be on Zoom.

To register for Zoom talks please email info@bmmhs.org A donation of £5 is requested per talk to cover costs.

The second July BMMHS talk is at Woodcote Village Hall on Wednesday 13 July at 7.30pm, and is entitled Frontier Ablaze – How the British Army operated on India's NW Frontier in the 1930s. The speaker is Mike Tickner.

To register for this talk, email us on info@bmmhs.org Entry cost is £8, which includes your entry ticket to the talk, a Q & A session.

It is planned that this meeting will take place in Woodcote Village Hall. Due to COVID please note that we are likely to have a reduced number of places and also that the meeting may change to a Zoom talk at short notice.

We strongly advise checking www.bmmhs.org for the latest information



WATER'S EDGE
PLUMBING & HEATING

Plumbing and Heating Services

Based in Crowmarsh, fully qualified and insured. Contact our friendly office team for a quick response to your requirements or to arrange your **FREE QUOTE**

01491 821 626

www.watersedgeuk.co.uk | contactus@watersedgeuk.co.uk

- General Plumbing
- Leak Repair
- Central Heating
- Boiler Repairs
- Boiler Installations
- Shower Installations
- Powerflushing
- Gas Safety Services
- Underfloor Heating
- Estate Agent Services

Proud members of



Checkatrade.com
Where reputation matters




Wallingford
— TILES & BATHROOMS

**Tile & Bathroom
Showroom**



Call Now 01491 377 272
showroom@wallingfordtilesandbathrooms.co.uk

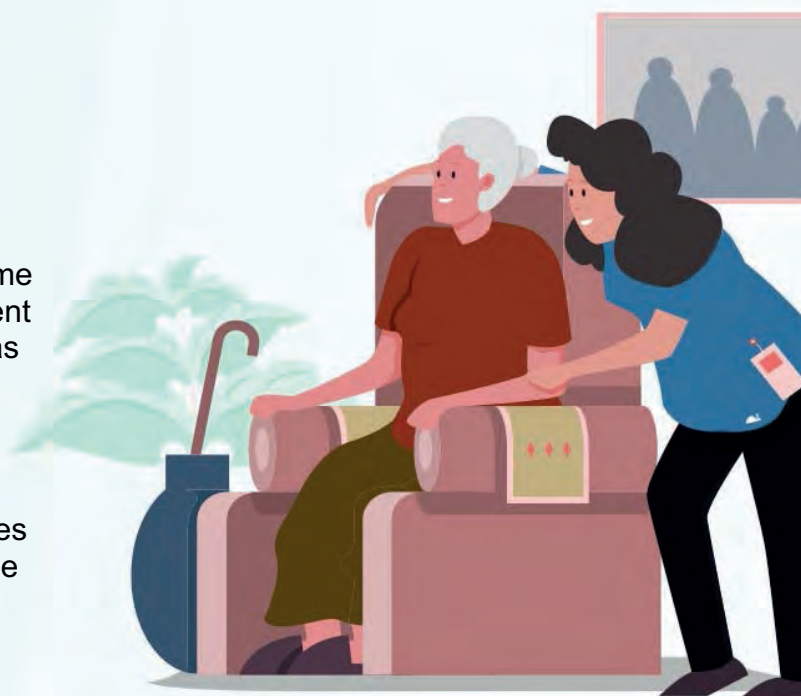


Do you, or a loved one, require support at home?

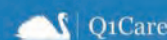
Q1Care prides itself in offering 'high quality' home care to enable people to stay safe and independent at home. We offer as much, or as little, support as required. From *companionship, practical help*, through to *complex needs*.

Work with us?

Become a valued employee, join a team that cares and make a difference to your community. Please email: heloise.slater@q1care.co.uk for more information.



Home Care across West Berkshire & South Oxfordshire
Email us: info@q1care.co.uk / heloise.slater@q1care.co.uk
Call us: 0118 932 3865
Visit us: www.q1care.co.uk



Winterbrook Garden Services Ltd

Garden Design, Construction & Maintenance

Fencing
Patios

Full Pruning Service

Tel: 01491 838189

Mobile: 0775 36 36 333

winterbrookgs@gmail.com



Winterbrook Garden Nurseries

High Road, Brightwell-cum-Sotwell,
OX10 0PS

Independent plant nursery
specialising in herbaceous
perennials
& garden curios

www.winterbrookgardennurseries.com

[f @winterbrookgardennurseries](https://www.facebook.com/winterbrookgardennurseries) [i](https://www.instagram.com/winterbrookgardennurseries)

Summer reading at The Wallingford Bookshop!



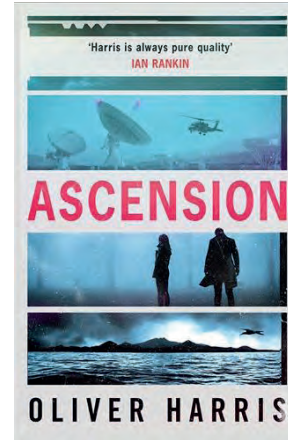
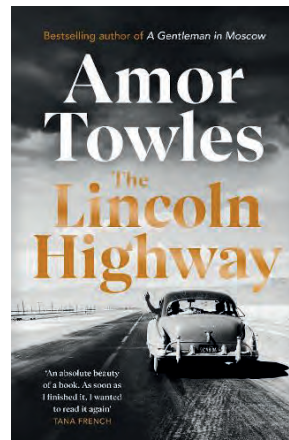
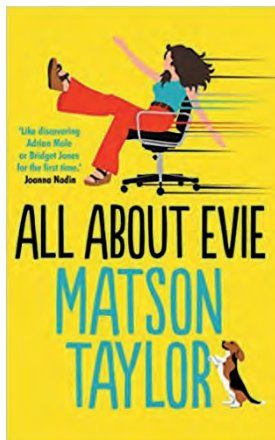
And finally, it is summer! Hopefully the weather will be kind, the ice creams cold and the strawberries sweet. Yes, I am all about food. And books. We have definitely seen an uptick in travel guide sales, so I guess everyone is off on holiday, so you'll all need a good book to read!

We have some old favourites returning and some cracking debut authors. One of my favourite books is **A Gentleman in Moscow** and Amor Towles latest, **The Lincoln Highway** (paperback, £8.99) does not disappoint. I love that Towles never writes the same book twice, all are different eras and protagonists but share the same beautiful writing. Jessie Burton's sequel to *The Miniaturist*, **The House of Fortune** (hardback, £16.99) is out in July – I was quoted on the original marketing for *The Miniaturist* which is one of my greatest claims to fame! Speaking of which, Wallingford appears as a character in the sequel to *The Miseducation of Evie Epworth* by Matson Taylor! Set in the 1970s, **All About Evie** (hardback, £14.99) sees Evie grown up and working in radio in London and navigating her twenties – Cosmo Wallingford is one of her (nice) suitors!

There are also some great beach thrillers, **Ascension** (paperback, £8.99) by Oliver Harris has a definite Le Carre vibe and **Northern Spy** (paperback, £8.99) by Flynn Berry is topically set during the Troubles in Ireland. **Triflers Need Not Apply** (paperback, £8.99) by Camilla Bruce follows one of the first female serial killers, who begins with her husband and cuts a swathe through the men of 1900s Chicago...

The children of Wallingford will be excited to know that there is a new Bunny vs Monkey coming in July – **The Rise of the Maniacal Badger!** There is also **Dead Good Detectives** by Jenny McLachlan of *Land of Roar* fame and **Monster Hunting for Beginners** by Ian Mark so they will be able to keep us all safe!

Have a lovely summer, eat ice creams and read books, whatever the weather!



Library books to your door

If you or someone you know are finding it difficult to get to the library, the Home Library Service can help!

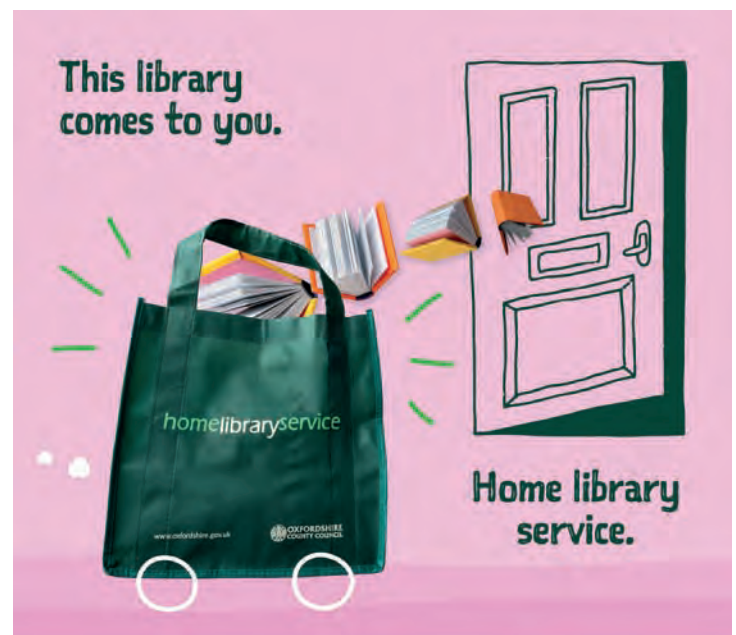
Run by Oxfordshire County Council, the Home Library Service is completely free and delivers books and other library materials to hundreds of people across the county.

Friendly volunteers choose items you like and visit every three weeks to deliver and collect them.

The service is open to people who struggle to physically visit a library. It's also available on a short-term basis after illness or hospitalisation, and to people with caring responsibilities.

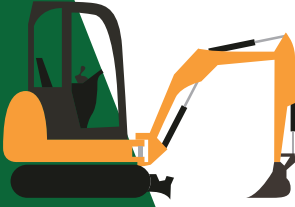
Registering is easy, simply call your local library or the Home Library Service on 01865 810259 or email homelibraryservice@oxfordshire.gov.uk

www.oxfordshire.gov.uk/homelibraryservice



G.R. Galliford

Graham
07762 650 809
01491 824583



Mini Digger
with Operator
Block Paving
Driveways
Patios
Drop Kerbs
Groundwork

g.galliford@btinternet.com

Fitzcount Land

Land Acquisition > Planning > Development Specialists

- Local knowledge , Oxon, Berks, Hants, Bucks, Beds, Wilts
- County Council specialists
- Planning consent, Promotion, Professional Services

We specialize in finding the best solution for your land to maximise its potential

All initial conversations free, without obligation, in complete confidence and with the upmost sensitivity.

Talk with Adam Goddard 07493 170307
adam@fitzcountland.co.uk

Over 20 years working for our customer partners

SHOE REPAIRS **ENGRAVING** **KEY CUTTING**

FEET FIRST

21 St. Mary's Street, Wallingford
Contact Gary on: 01491 825224

WATCHSTRAPS BATTERIES **STITCHING REPAIRS** **TRAVEL GOODS LUGGAGE**

Benson Angling Centre
Your Friendly Local Angling Centre

Unit 3, Benson Waterfront,
Benson Wallingford OX10 6SJ

Tel: 01491 838288
Email: dibby1949@yahoo.co.uk




Stockists of Drennan E.S.P. Dynamite Baits, Sticky Baits, Baitech, Dead Baits and Live Baits Available. We buy and sell all used angling items



Keri
THE FLORIST

INSPIRATION CREATION TUITION

1 Ayres Yard, Station Road, Wallingford, Oxon OX10 0JZ
T: 01491 838005 E: keri@wallingfordflowers.co.uk

www.wallingfordflowers.co.uk



TUNELESS CHOIR

singing like no one is listening

Tuneless Choirs are for those who have always been told they can't sing in tune but LOVE to do it anyway!




WALLINGFORD TUNELESS CHOIR

Singing in person every Thursday evening

St Mary-le-More Church, Market Place, Wallingford, OX10 0EG
Registration starts from 7.45pm. Singing starts at 8pm.



Price: **£10** the first time you attend for all new members
(Includes registration, song book and singing session)
£7 pay as you go
or **£5** per session when booking an 8 week block

Contact us:
Tracy Noble on 07843 144737
wallingford@tunelesschoir.com
www.tunelesschoir.com/wallingford



Aspøa
SCANDINAVIAN INTERIORS

10 ST MARY'S STREET WALLINGFORD

HOWARD CHADWICK FUNERAL SERVICE

A caring family owned and managed Funeral Service

- Dedicated Private Chapel of Rest •
- Golden Charter Pre-Paid Funeral Plans •
- Specialists in Memorial Stones and Designs •

33 Benson Lane, Crowmarsh Gifford, Wallingford OX10 8ED
Tel: 01491 825222



www.chadwickfuneralservice.co.uk

Golden Charter Funeral Plans

Wildlife Memories by Barry Collett

New Zealand (North Island)

In January 2004, to celebrate our fortieth wedding anniversary, my wife and I embarked on a six-week tour of New Zealand. We began by staying with some long-lost relatives in Nelson. In their garden I saw monarch and long-tailed blue butterflies, which for me were new and very exciting species.

After a brief spell on the South Island, we took the ferry to Wellington, hired a car and set off to explore the North Island. We visited the tiny village of Wallingford and I saw more butterflies nearby, such as the New Zealand red admiral and the yellow admiral.

Following the tourist trail, we visited the Waitomo Glowworm Caves, which are home to a species of glowworm (*Arachnocampa luminosa*) only found in New Zealand. This glowworm is actually a type of fungus gnat and it is the larvae, hanging down from the rooves of the caves in long strings, that are responsible for the glow. We took a boat trip through the caves and the blue-green bioluminescence emitted by the glowworms created a unique, eerie spectacle.

We then moved on to Rotorua to see the geysers and boiling mud, which were most impressive. We heard how, in the past, some bright spark had suggested that, with geothermal energy underfoot, wouldn't it be a good idea to tap some of it to meet the energy needs of the local hotel? So the scheme went ahead. The only drawback was that the geysers stopped working and nobody wanted to stay at a hotel famed for its nearby geysers when those geysers were no longer functioning. Walking away from the geysers, I noticed that, in the cracks in the warm rocks, a small woody shrub (*Leptospermum scoparium*; also known as the New Zealand tea tree) was growing. I recognized it because I had one growing on my rockery that I had grown from seed. It succumbed during a very cold snap a few years later. I suspect that it died of frostbite whilst pining for the warm rocks of New Zealand!

Our final major trip involved a boat journey from Auckland to the offshore island of Tiritiri Matangi in the Hauraki Gulf. Most of the islands in the Gulf had been converted from the native bush into pasture and general agricultural land. More recently, some of them have been returned to their original state by tree planting and the reintroduction of native ferns. Tiritiri is described as an 'open sanctuary' where people are free to wander at will. We saw lots of the endemic birds, such as the New Zealand bellbird, tui, saddleback and fantail (which is like a cross between a Harrier jump jet and a ballet dancer). We also saw the takahē, which was believed to have been extinct until it was rediscovered in the 1950s on Stewart Island off the southernmost tip of the South Island and extensively reintroduced to the mainland.

Next month: New Zealand (South Island).



WINDOW ON WALLINGFORD

OXFORDSHIRE SOUTH AND VALE CITIZENS ADVICE NEEDS VOLUNTEERS

citizens
advice

Are you looking for a new challenge and want to give something back to your community?

Oxfordshire South and Vale Citizens Advice is looking for volunteers to work in our friendly offices in Abingdon, Didcot, Henley or Thame.

We give people the knowledge and confidence they need to find their way forward - whoever they are and whatever their problem. Last year, our 127 volunteers supported over 9,200 people. We were able to help four in five to resolve their problems.

We are looking for:

- **Advisers:** after comprehensive training you will be giving advice to clients in person or via the telephone or webchat. We give advice on a broad range of topics including debt management, benefits, employment, housing and relationship issues. You will need good IT skills and a desire to help people in your local community.
- **Receptionists:** you will be meeting and greeting clients, inputting client data, sorting out the post and paperwork from clients, sending out reminder texts to clients and making and receiving phone calls.
- **IT specialists:** to help to maintain our IT systems and support the service. Help staff and volunteers with day-to-day IT issues, for example with trouble logging on, connecting to Wi-Fi, and locating or accessing files. We also would welcome support to maintain our local Citizens Advice website.
- **Training & HR Administrator:** to assist our Training & HR Manager we are looking for an experienced administrator to help produce training materials, organise training sessions, maintain training records and help with HR administration. You will ideally be used to using Microsoft Word and Powerpoint.

We would like you to be available for two sessions per week if possible, either mornings or afternoon or a whole day. We offer a rewarding, flexible and supportive working environment.

If you would like to make a contribution to your local community, gain new skills and meet new people, please follow this link: <https://www.citizensadvice.org.uk/local/oxfordshire-south-vale/volunteer/>

Or if you would like to discuss these volunteering roles please email: recruitment@osavcab.org.uk and one of our team will be in touch with you.

OXFORDSHIRE SOUTH AND VALE CITIZENS ADVICE – NEW TRUSTEES NEEDED

Role: Trustees

Organisation: Oxfordshire South and Vale Citizens Advice

Location: Head Office, Abbey House, Abingdon, OX14 3JD

If you would like to discuss this opportunity, please contact Jane Richardson, the Chair, via jane.richardson@osavcab.org.uk or email recruitment@osavcab.org.uk for an application form.

REACHING FOR THE STARS!

Childcare Choices
WE NOW OFFER TAX-FREE CHILD CARE!

Stagecoach Wallingford
Singing, dancing and acting classes for 4 - 18 year-olds

🌐 stagecoach.co.uk/wallingford
☎ 01235 390 810
📍 Wallingford School, OX10 8HH

STAGE COACH
Creative Courage For Life!

TRAFFALGAR ENTERTAINMENT | COMPANY

YouTube

St Mary's & St Leonard's Wallingford
open to God, open to all

8am St Leonard – Holy Communion
10am St Mary-le-More – Parish Communion with Children's Church, All Age Worship or Family Service (also live-streamed)
6.30pm St Leonard – Evensong

www.marylemore.co.uk

Team Rector: The Revd David Rice Tel: 01491 202188

Wallingford Tyres & Exhausts

FRIENDLY, PROFESSIONAL SERVICE AT COMPETITIVE RATES

PHONE: **(01491) 824145** FOR A QUOTE
or call in at: **AYRES YARD, STATION ROAD, WALLINGFORD, OXON.**
OR BY APPOINTMENT OUTSIDE WORKING HOURS
Mon.-Fri. 8.30 a.m.-5.30 p.m. Sat 8.30 a.m.-1.00 p.m.
(Just past the Esso Garage on the way to Didcot)

Have you a Lasting Power of Attorney for Finance and Health?

HELP-PEN-HAND

Learn about LPAs for just £35. Then you can do it yourself – if daunted, I'll help you. Val Wolsey

01491 836820 | HelpPenHand@gmail.com

LOVE HAIR? LOVE FASHION? BE A HAIRDRESSER

Apprenticeships available now!

FORRESTERS Call Forresters: **01491 837 523**
Drop in: **25 High Street, Wallingford**

Forresters4hair.com **Apprenticeships**

Dr. A. Ratti BDS (Hons) Kings College London

ST MARY'S DENTAL PRACTICE

New patients welcome
Affordable quality private dental service from a caring team
New maintenance plan available from Jan 2018
Call for more information
01491 825 252
www.stmarysdental.co.uk

Mum and baby/toddler fitness classes running in Cumnor, Didcot, Wallingford & Oxford

Contact Jen to book your free trial

🌐 www.mumtomumfitness.com
☎ 07771 848387 ✉ jen@mumtomumfitness.com
📱 [mumtomumfitness](https://www.facebook.com/mumtomumfitness) [@mumtomumfitness](https://www.instagram.com/mumtomumfitness)

THE WALLINGFORD BOOKSHOP
10C ST. MARTIN'S STREET
WALLINGFORD, OXFORDSHIRE OX10 0AL
Telephone / Fax: 01491 834383
Email: books@wallingfordbookshop.com

We offer friendly informed assistance and an excellent range of books, audios and fine art stationery.

Many titles not stocked can be obtained within 24 hours.

Summer Reading Challenge 2022

GADGETEERS

Presented by The Reading Agency.
Delivered in partnership with libraries.

Get curious and inventive this summer with a FREE children's reading challenge at your local Oxfordshire library!

From 9th July to 10th September, children across Oxfordshire can collect stickers and rewards as they read library books.

This year's theme "Gadgeteers" is all about creativity, science and innovation. Children who finish the challenge at an Oxfordshire Library will get a medal and certificate and be entered into the countywide prize draw. Join in to become a Gadgeteer!

Under 3s can take part in a mini challenge with their own special card and stickers.



Look out for fantastic new books and activities at your library.

Find out more at www.oxfordshire.gov.uk/summer-reading-challenge
Go to summerreadingchallenge.org.uk for more fun!



Wallingford Gardening Club - Closure

Over the past 66 years The Wallingford Gardening Club has achieved a loyal following; throughout these years, there have been many and varied speakers taking the club through a wide range of topics from propagation to compost, colour displays, garden design, bugs-n-slugs, plant hunters of the past and so on. During the summer months the club visited a multitude of gardens in the Oxon, Bucks and Berks area.

A highlight of each year being in May was the annual plant sale in the Market Place, where many bargains were obtained with expert horticultural advice.

So it is with regret, The Club has now decided to hang up their spades and forks, replacing wellies with slippers, this is because with an ageing membership and fewer new non-OAP recruits, there has been a reliance on the few to keep it organised and running. Since there have been no volunteers to replace the committee, four of whom will be octogenarians in 2022! we feel it better to conclude now, in a relatively strong position than slowly wither away like autumn leaves.

With all the formalities of closing a club out the way, at the final committee meeting it was agreed that the remaining funds be shared with three local primary schools St John's, Firtree Junior and St Nicholas, together with the MIND allotment and also Perennial (the only UK charity dedicated to helping those working in, or retired from, horticulture and their families when they need a helping hand).

So, with this done, it is with sadness the WGC closed its doors for the last time on 31st May 2022.

The Clubs website will still available to view till the end of the year and if anyone would like to take up the challenge and re-establish a gardening club in the town then feel free to contact us on gardenswallingford@gmail.com and we would be happy to share our knowledge.



FAMILY PAGE

Stagecoach has been in Wallingford for a year!

Stagecoach Abingdon has been teaching and inspiring children in singing, dancing and acting for over 20 years! Principal Tara, a performer and teacher herself, took over the school in 2018 and quickly expanded into Didcot in 2019 and Wallingford in September.

When asked what their favourite thing had been at Stagecoach this last year, students Octavia and Charlotte both talked about how much fun they had had doing our show, *'The Wind in the Willows'*, meeting each other and other new people and *'doing what I love'*.

During the term time classes, students have the opportunity to work with regular teachers each week, as well as special guest workshops, including West End professionals where they learn actual West End choreography (all included in term time fees). In addition to our annual show, performed at the Amey Theatre in Abingdon, parent presentations take place at the end of every term.

We offer exciting West End performances that students participate in. This November we'll be taking a group to perform in the Shaftesbury Theatre. Holiday workshops are also available, including a 'Show in a Week' each summer, and Easter and Christmas workshops. Of our 'Show in a Week', student Noah said *'When you're at a Summer Workshop it feels like home. You make friends for life and love every second of it!'*

Stagecoach is the world's largest network of performing arts schools, with more than 750 extra-curricular performing arts schools worldwide. Stagecoach aims to make a difference in its students' lives by teaching Creative Courage for Life, with many students going on to be professionals and world-renowned actors, singers and dancers. Early Stages classes are available for children aged four to six and Main Stages classes take place for six to 18-year-olds every weekend.

For more information about Stagecoach Abingdon, Didcot and Wallingford, please visit their website at www.stagecoach.co.uk/abingdon or call 01235 390 810.

Notable alumni are Emma Watson, Jamie Bell, Eleanor Tomlinson, Tuppence Middleton, Tom Fletcher, Dani Harmer, Josh Cuthbert, Danny Mac and Charlotte Jaconelli.

Find Stagecoach on Facebook at www.facebook.com/stagecoachtheatrearts and on Twitter at www.twitter.com/stagecoach_gbr.



Cranford House School Sixth Form

Nestled in the heart of South Oxfordshire's countryside, a newly opened independent Sixth Form is setting new standards for A-level teaching and learning. Nearly a decade in the making from concept to creation, the Cranford House Sixth Form is quickly gaining a reputation as a sought after institution where students thrive.

The moment you walk through the doors at the Sixth Form, you can feel the buzz, energy and excitement. In the corridors you hear laughter, chatter and debate. Students embrace challenges both in and out of the classroom with a sense of freedom and mature determination. There is a breadth and depth of A-level choices on offer which any conscientious student would expect, however the school's ability to offer such a wide flexibility of option choices makes this curriculum one where students feel empowered and secure. Enrichment opportunities from water sports, debating society, photography to EPQs allow students to branch out and explore their independence and develop new skills. This Sixth Form might be in its infancy but Cranford House has been a centre for teaching excellence for over 90 years and is known as South Oxfordshire's best kept little secret.



This Summer, pupils will be awarded the school's first set of A-level exam results. With Cranford House's reputation as the top ranking co-educational independent school in Oxfordshire at GCSE the future looks bright for their Sixth Form graduating class of 2022.

Experience first-hand what the school has to offer at their upcoming Whole School Open Morning, Saturday 8 October. Advanced booking is recommended for this popular event and can easily be done at www.cranfordhouse.net

Wallingford Christian Assembly, Atwell Close – Junior Friday Club

Friday Club has been run by Wallingford Christian Assembly for over 40 years since its beginnings in the Scout Hut. We are pleased that some of the current members have parents or even grandparents who attended as youngsters. It is an outreach provided free by the Wallingford Christian Assembly in Atwell Close. It has as its ethos the teaching of Christian values and Bible stories in a way that is fun and interesting. The club meets each Friday evening during term time for stories, games, crafts quizzes and singing. Our Junior Friday Club is for primary school children, but we also run a club for secondary school children – more about that in coming months. We help the children engage in craft activities linked to special days or Bible stories. The picture below (left) shows one of the Lego houses the children built to illustrate the story of the wise man who built his house upon the rock.



The picture above (centre) shows gifts that were made for the children to present for Mothers' Day. One of the annual highlights is the "outing" to places like the Cotswold Wildlife Park.

The picture above (right), shows one such occasion where children and their parents met up for a BBQ before going off to see the animals.

Friday club currently runs from 6pm to 7pm and we provide a free minibus service. If you would like further information please email us : info@w-c-a.org.uk. Alternatively you can follow us on Facebook : <https://www.facebook.com/WallingfordFridayClub>.

Paddocks Pre-School

Paddocks Pre-school
Paddock Road
Wallingford
OX10 9LT
www.paddockspreschool.com

A friendly preschool environment offering a wide range:

- Flexible sessions for 2 – 5 year olds
- Universal 15 hours funding for 2, 3 & 4 year olds
- Extended 30 hours funding for 3 & 4 year olds
- Large Garden & Forest School
- After school care available
- Holiday play schemes for 2-8 year olds



For more information or to arrange a visit, please call **01491 825333** Charity Number: 1001964
or email info@paddockspreschool.com

Tom Cottrell Landscapes

EST 1974 Family Run Business

Telephone: **01491 836974**

All tree aspects - Dave Cottrell

- Felling • Reducing • Reshaping
- Thinning, Removal • Pollarding
- Shrub & Tree Pruning • Dead Wood
- Removal Hedge Management
- Stump Grinding

Garden & Landscaping Services

- Turfing • Hedge & Grass Cutting
- Planting • Fencing • Patios
- General Garden Maintenance
- Garden Renovation & Construction
- Woodchip Mulch
- Seasoned Logs & Kindling Wood

www.tomcottrelllandscapes.com

Email: tomcottrelllandscapes@gmail.com

Orchard Cottage, High Road, Brightwell-cum-Sotwell, Nr Wallingford, Oxon OX10 0PS

JIM PINK (WALLINGFORD) LTD

The Friendly Family Firm
Serving the Motorist since 1960

NEW & USED CAR SALES • SERVICING ALL MAKES
MOT CENTRE • AIR CONDITIONING SPECIALISTS
TYRES • BATTERIES • EXHAUSTS
CAR SALES • SERVICE CENTRE

Wood Street Garage, Wood Street, Wallingford

01491 836017

01491 836022

07342 630396

www.jimpink.co.uk

info@jimpink.co.uk



1960-2022
62
Years



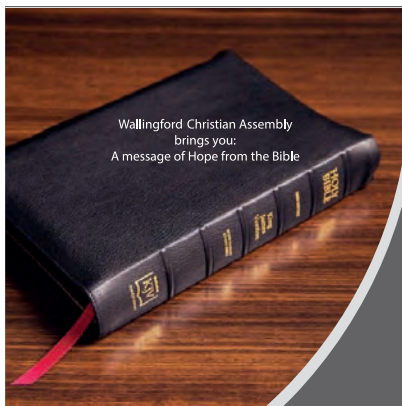
www.thecabinpreschool.co.uk

Reading Road
Woodcote, RG8 0QY

- Within primary school grounds
- Flexible sessions for children aged 2—5 years
- Government funding for 2, 3 & 4 year olds
- Term Time 8:30—15:30

01491 680854 info@thecabinpreschool.co.uk

Registered Incorporated Charitable Organisation: 1164579



Wallingford Christian Assembly
brings you:
A message of Hope from the Bible

Faith cometh by hearing and hearing by the Word of God (Romans 10:17, the Bible)

Join us online

Every Sunday @ 17:00
20 min message



We invite you to hear a short message from the Bible, available from the comfort of your own home.

To watch live:

Zoom ID: 491 229 776
Passcode: 316

Not able to join on a Sunday – catch up on demand:

[@Wallingford Christian Assembly](https://www.youtube.com/channel/UC...)



[@GodsGoodNews \(God's Good News for South Oxfordshire\)](https://www.facebook.com/GodsGoodNews)

Wallingford Christian Assembly
www.wallingfordchristianassembly.org.uk

SIMON THE STRINGER

Tennis and squash racket stringing across Oxfordshire and Berkshire.
Collection and delivery available.

info@simonthestringer.co.uk
www.simonthestringer.co.uk
Tel: 07711 948 550



Crosby Engineering

Latest Diagnostic Software
All Makes & Models Serviced & Repaired
Laser 4 Wheel Alignment
MOT

Air Conditioning servicing
Free Local collection

Audi BMW Mercedes VW Specialist
Family Run Business In Wallingford Since 1980

01491 834544

Unit F The Croft
Whiteley Road
Hithercroft Ind Est
Wallingford
Ox109rg

customer care without compromise

CHEQUERS GARAGE



Fullers Road, Aston Tirrold,
Oxfordshire OX11 9EN

info@chequers-garagedidcot.co.uk
www.chequers-garagedidcot.co.uk

At Chequers Garage we look after our customers as well as their cars. That's why we have courtesy cars, offer local collection and delivery, explain your invoice in plain English and every car is washed before it is returned - not only will your car run well, it will look great too!

- MOT
- SERVICE
- TYRES
- AIR CON



the Good Garage Scheme

Call today on 01235 850347



Wallingford's Platinum Jubilee and visit of our twinned town Mayor Frédéric Burghard from Luxeuil-Les-Bains.



Wallingford
Town Council

The Queen's Platinum Jubilee. Well, what a fantastic weekend of activities. The weather held and the community came together to celebrate.

It all started with the Mayor visiting playgroups and primary schools to give the children a very special commemorative coin, the delight and excitement of receiving these coins was special.

We invited the Mayor and his family from our twinned town Luxeuil-Les-Bains to reignite our relations for the weekend and attend variety of events, to experience Wallingford at its best. This culminated with the planting of three roses in the rose garden in Castle Gardens.

Frédéric our twinned Mayor planted a rose called Elizabeth to mark the visit and the jubilee. Marcus our mayor planted a rose for the community of Wallingford for all that they did during covid and Ken Lester our High Steward of Wallingford planted one for the Street Pastors who won the High Stewards Award this year.

Over the weekend our mayor and our twinned Mayor visited many well attended events such as the David Beasley photographic display in the Town Hall of Jubilees past - a real trip down memory lane. They had a back of stage visit to the Corn Exchange to hear all about the facility, how it works and what's on. The Hithercroft Sports Park had a free family day of fun which was great to experience all they have to offer, tennis, skittles, pétanque and much more.

Cholsey and Wallingford Railway was running with afternoon tea trips and to experience the newly installed Maidenhead Canopy was special indeed.

The carnival at home was again a great success with schools, homes and businesses taking part and showing off their creative skills.

The long weekend was topped off, even if the weather wasn't so great the spirits were high, with a picnic in Castle Gardens where we came together to experience some amazing talent on stage to entertain us, the children played, donkeys kept us calm and hunting the Queen's Corgis was a fun way to explore the grounds. The picnic ended with the whole of the community in Castle Gardens singing the National Anthem 'God Save The Queen'.

Mayor of Wallingford Marcus Harris said "This is why I love Wallingford and being Mayor, a special weekend where memories were made. The children's faces when they received the coins was a really lovely experience. Renewing our relationship with our twinned town Luxeuil-Les-Bains was a real success and we will work together to build on the foundations laid. Thank you to Cllr Ros Lester, the organising committee and everyone who played a part in making celebrating the 70 years of the Queen's reign a huge success."

Frédéric Burghard commented "Thank you so much for the warm welcome to me and my family. The whole weekend was well organised and kept us entertained, with so much to see and do. Wallingford is such a lovely town and the people, their spirits shone through over the weekend. We look forward to working more closely together into the future."





Wallingford Museum News



Wallingford Museum is planning some really exciting activities and events to offer our visitors through the summer months. On Saturday July 23 the Museum will join in with the National Festival of Archaeology, with a family archaeology drop in between 11 - 4 pm. Bring along your own finds, meet our experts and get hands - on with archaeology. No need to book.

We are going to offer the **Arts Award Discover at Wallingford Museum**, starting in the summer holiday. Arts Award is both a certificate and an award. Taking part is creative and fun and a great way to find out about Wallingford Museum and our local history and archaeology. To achieve an Arts Award Discover, children collect evidence in an individual arts log of their experiences. Along the way they will find different types of arts in Wallingford Museum, take part in museum arts activities, research local artists and makers and share their discoveries. Our **Big Art day on 20 August** will be part of the programme but also open to everyone. More information can be found on our web site.

BunkFest 2 - 4 September - museum extended opening hours

Tuesday 30th August - Friday 2nd September 2pm-5pm

Saturday 3rd September and Sunday 4th September 10.30am- 4pm

Special FREE BunkFest Castle History walk Friday 2nd September - meet at the museum 4pm.(Not suitable for dogs) Donations welcome

Special FREE BunkFest - gentle guided walk around our lovely historic town - Sunday 4th September - meet at the museum 11am. Donations welcome

Our popular Agatha Christie weekend will take place 9th to 11th September.

We are now taking bookings on the web site for Fabulous Fossils, which is being offered at the Museum on 24 September by the Oxford Geology Trust. Get your FREE event tickets soon for the budding paleontologists in your family. Booking Essential

Wallingford's Guided Historic Town Walks are rolling again, every Saturday morning at 11.00am, until 24 September. There is no advance booking, so just meet the guide under the Town Hall in Wallingford Market Place at 11.00am any Saturday. The round tour takes approximately an hour and a half.

The cost is £10 per person (cash only please) which includes an open season ticket to Wallingford Museum for 2022. All walk proceeds help to support this splendid volunteer-run museum.

Each walk is led by an expert guide from The Wallingford Historical and Archaeological Society, exploring the backstreets and bringing to life the history of the town and its buildings from Saxon times to the present day.

To request special group tours and find out about all museum events, please visit www.wallingfordmuseum.org.uk

Museum Bookshop

We have an excellent selection of good second-hand books (both fiction and non-fiction) at sensible prices. We look forward to seeing you - it's free to browse!

The Wallingford Historical and Archaeological Society

13 July (Weds) Janice Kinory: 'Oxford Past and Present - Images from the Historic Environment Image Resource (HEIR) Project'

<https://www.twhas.org.uk/meetings-programme.html>

Sue Wright, Wallingford Museum



WHAT'S ON

AT THE CORN EXCHANGE, WALLINGFORD



CINEMA

All regular performances normally start at 7:30pm unless stated otherwise.
Tickets £8 for Adults and £5 for under 15s unless otherwise stated.

All events now have full seating. This is in line with the practices and guidelines elsewhere. We are still asking patrons to sanitise their hands, and also wear a face covering when inside the building. We'll continue to fog all public areas after each performance. We have recently installed new air filters as a safety precaution. We're grateful for patrons for their observation of all the Covid rules that we have implemented in the theatre.
Please look out for new updates for the programme on the website www.cornexchange.org.uk.

Friday, 1st July, 7:30pm
Sunday, 17th July, 7:30pm
Monday, 18th July, 7:30pm
Tuesday, 19th July, 7:30pm
Wednesday, 20th July, 7:30pm
Friday, 22nd July, 7:30pm
Saturday, 23rd July, 7:30pm
Sunday, 24th July, 7:30pm
Monday, 25th July, 7:30pm
Tuesday, 26th July, 7:30pm
Friday, 29th July, 7:30pm
Saturday, 30th July, 7:30pm
Sunday, 31st July, 7:30pm

Jurassic World Dominion (12A)
Elvis (12A)
Elvis (12A)
Elvis (12A)
Good Luck to You, Leo Grandee (15)
Good Luck to You, Leo Grandee (15)
Nitram (15)
Nitram (15)
The Quiet Girl (12A)
The Quiet Girl (12A)
McEnroe
McEnroe
McEnroe

The Sinodun Players presents at The Corn Exchange Theatre Wallingford

BEDROOM FARCE



SPECIAL OFFER!!
OPENING NIGHT
TICKETS £9

by Alan Ayckbourn

Directed by Erica Harley

TUE 12 - SAT 16 JULY

Tickets online at cornexchange.org.uk



Scan to find
out more

Discover our unique dementia care

So many things define us as individuals, but dementia doesn't have to. We see the person behind it, and help them live the life they want, to the full. As the only care home group with its own accredited City and Guilds dementia training 'My World', innovative dementia friendly design, and support for the whole family, you can trust that we go further.

Freephone

0808 223 5401

Online

[caringhomes.org](https://www.caringhomes.org)

Churchfield Lane, Benson, Wallingford, Oxfordshire OX10 6SH

Benson House



CARING HOMES

Benson House

CARING HOMES

Benson House Care Home supports local charity with donation

Benson House is supporting the Oxfordshire Mind Charity with a donation of £500, after receiving the cheque as part of their shortlisting for the 'Best Exterior Space' in the prestigious Pinders 2022 Healthcare Design Awards.

Each shortlisted entry has an equal sum of money to donate to the charity of their choice, and Benson House chose to donate theirs to the Oxfordshire Mind Charity, an organisation who make sure anyone with a mental health issue has somewhere to turn for advice and support.

Benson House Home Manager said, "We felt strongly about donating the money to an organisation which supports those in the local community."

Julia Molloy, Community & Corporate Relations Assistant at Oxfordshire Mind Charity was overjoyed to receive the donation and said, "We are incredibly grateful to Benson House Care Home for choosing to donate their prize to Oxfordshire Mind. This donation will go towards the vital services we provide in supporting people with their mental health, whether this be through our information service, housing, benefits support, talking therapies or physical activities. Donations like these help us to continue the important work we do in supporting adults, children and young people throughout Oxfordshire who need access to our support and services."



Discover Benson House Care Home

Benson House our purpose-built luxury care home in Benson near Wallingford provides residential, nursing and dementia care on a permanent and short stay basis. The home is centred around our residents, their needs and wishes, with various lounges which are perfect for socialising, to a cinema room, bistro area and hairdressing salon, there's plenty to keep residents busy. Keeping things personal

The wonderful surroundings at Benson House are matched by the standard of care our team brings residents. We love learning as much as we can about the people we care for, so their time is tailored to their individual needs, interests and preferences. We give as much independence as possible, letting individuals choose how they wish to spend their time and when it comes to individual bedrooms, we help our residents to put their unique stamp on their room and keep things just how they like them.

Every need catered for

Mealtimes are an important part of daily life at Benson House. We know eating well and the social experience of dining are key to health and wellbeing. Our chefs select a different menu each day, creating lots of home-cooked dishes with fresh ingredients to choose from. Using their in-depth knowledge of nutrition, they cater for any special diets and needs. Whether you like three-meals-a-day or prefer to eat little and often, our menus and snack options provide complete flexibility.

Keep doing what you love

There are group activities to enjoy seven days a week, including crafts, quizzes, films and gardening. If residents prefer to spend one-on-one time with a member of the team, they can enjoy a walk in the garden, tea and cake and much more.

View our home

Our home is open for viewings and we're welcoming new residents and their families safely.

Call freephone 0808 223 5401 to find out more about our home and the care we offer.



 **Home Instead.**
To us, it's personal

Join our Care Team
Family at
 Home Instead



If you are compassionate, caring & love helping people, talk to us about joining our wonderful team who have been supporting local people in & around Wallingford since 2012.

♥ Excellent training Part time, flexible hours Great rates of pay ♥
 Award winning, friendly, family run company

Our care team support people young & old in a variety of ways – from companionship to dementia care, from live in to hourly support. Join our friendly team and make a difference to someone's life everyday.

Call us on 01491 877132 www.homeinstead.co.uk/henley

Workspace solutions for hire in Wallingford



A flexible work environment

Workstations
 Meeting Rooms
 Private Offices
 Registered Addresses

IDEAL FOR:

Meetings
 Desk hire
 Presentations
 Training

Hi-speed Wi-Fi and as much tea and coffee as you need!



www.oldcountinghouse.co.uk
 82e High Street, Wallingford

**No Problem
 No Call Out Charge**

Gutters Cleared

We remove leaves - moss - grass - growth & debris

12,500+



Photos Before & After
 We do a camera survey first



Go High
 4 Storeys, Commercial, Schools, Hotels & Industrial



Damp & Mould
 Can be caused by blocked gutters



Weight & Damage
 Up to 50kg of debris straining your gutters



Get an instant price

01491 815 450

or online gutterpro.co.uk

Domaine de Pouroutounat in the South of France

In March 2020 my husband and I had booked an eight week holiday at Domaine de Pouroutounat in France to celebrate our retirement! Then suddenly we were in lockdown and all plans went on hold. We have just returned from France where we were finally able to enjoy our much anticipated holiday, two years on.

Domaine de Pouroutounat is a stunning French farmhouse and holiday home in 7 acres of parkland and grounds nestling under the foothills of the Pyrenees. The property, which consists of a six bedroom farmhouse and an apartment above a barn, and the English owners' house, originally dates from the 1600s and has been lovingly restored. It is now a wonderful place to relax and enjoy this special area of southern France. We stayed in the converted barn, with timber beams and exposed stone walls. It is elegantly furnished with three double bedrooms, a newly refurbished en suite and main bathroom and a large open plan living room, kitchen and dining area which was perfect for the two of us, and then for our family and friends who visited during our stay. Everything was spotless. The beds were comfortable and the bed linen and towels were of the finest quality. New linen was provided each week. The owners, Jon and Vicky were on call if we needed anything, and made us feel very welcome from the moment we arrived.



The closest town is Mirepoix, about ten minutes away, a medieval town famous for its bustling cafe and restaurant scene and its Monday market, one of the largest in the area. It also has the most beautiful ancient cathedral with the second widest roof span in the world! About 45 minutes away is Carcassonne, a UNESCO World Heritage site – well worth a visit if just for the view of the medieval city perched on top of the hill. Surely the inspiration for Walt Disney's castle! The countryside in this part of France is stunning, with snow-capped mountains of the Pyrenees in the distance and rolling hills covered in vineyards around every corner. The quality of the local food and wine is exceptional and added greatly to our holiday experience. The Canal du Midi is just a short drive away with lovely canal paths to cycle or walk along. The city of Toulouse is only a 90 minute drive and visitors can fly cheaply into Toulouse or Carcassonne.

Back at the Domaine we had exclusive use of the lovely heated pool, with its outdoor kitchen and bbq, and plenty of sunbeds and umbrellas – these came in handy when on the final days of our stay it reached 31 degrees!

If you are looking for a holiday home for the whole family (the Domaine has nine bedrooms across the two properties) or just a lovely place to stay for a smaller group in this part of France then call Jon and Vicky on +33 758 907714 or email reservations@domainedepouroutounat.com For more information, images and a video, go to their website www.domainedepouroutounat.com

Lesley Longden



WOW DINING OUT/IN

GRAPE MINDS

Hand-selected wines, spirits and beers



- Free delivery for 6 or more bottles
- Party services (sale or return, free glass hire & more)
- Friendly advice
- Tasting evenings
- 500+ different bottles
- Wine open to try

10 St Martin's Street, OX10 0AL 01491 824549
www.grapemindsdrinkalike.co.uk

SUNDAY ROAST



2-Course Roast

Join us on the River Thames at Shillingford Bridge Hotel!



@shillingfordbridgehotel

Shillingford Bridge Hotel,
Wallingford, OX10 8LZ

E: reservations@shillingfordbridge.co.uk

T: 01865 858567

£19.50
per person



THE COOKHOUSE — DELI — WALLINGFORD

We supply traditional delicatessen styled goods, varying from speciality store cupboard ingredients all the way through to indulgent treats in local cheeses, locally brewed ales and perfect accompaniments to help create the perfect family kitchen.

14 Market Place, Wallingford OX10 0AD

Manor Café at Howbery
Open: 9am-4pm, Mon-Fri



- ✓ Hot and cold drinks, homemade cakes: all day
- ✓ Breakfast: 9.00am - 10.30am
- ✓ Paninis, baguettes and baps: 11.00am - 2.00pm
- ✓ Hot and cold lunch options: 11.30am - 1.30pm

Order online or at service counter | Outside and indoor seating areas
 Takeaway service | Beautiful grounds | Ample parking

www.howberypark.com

Londis

38 Sinodun Road, Wallingford

Tel: 01491 837932

- Fruit & Vegetables
 - Beers & Wines
 - Newspapers
 - Magazines
 - Mobile Top-up Vouchers
- Plus the National Lottery



best value locally

Opening hours:
 Mon-Sat. 6.00am-8.00pm
 Sunday 6.30am-1.00pm

WALLINGFORD TEA & COFFEE

We roast High Grown Coffees and we stock Quality Teas together with a range of Herbal beverages and Spices plus a wide variety of Tea and Coffee accessories

Wallingford Tea & Coffee Company Limited
 6a St. Martin's Street
 Wallingford, Oxon. OX10 0AL
 Telephone: 01491 836263
kitchtea@gmail.com



Slimming World Hunters Chicken



Ingredients

- 1½ tbsp red wine vinegar
- 1½ tsp sweet or hot smoked paprika
- 1½ tsp garlic granules
- 2 tbsp Worcestershire sauce
- 2 x 400g cans chopped tomatoes
- 4 smoked bacon medallions, visible fat removed
- 4 skinless and boneless chicken breasts
- 200g grated mozzarella (cow's milk)
- 400g green beans, trimmed
- 15g fresh flat-leaf parsley, chopped, to serve

Method

1. Preheat your oven to 200°C/ fan 180°C/gas 6. Put the vinegar, paprika, garlic, Worcestershire sauce and chopped tomatoes in a large, shallow, flameproof casserole dish. Place over a medium-high heat, bring to a simmer and cook for 20 minutes, stirring occasionally. Season to taste.
2. Meanwhile, gently bash the bacon medallions to flatten them out and lengthen slightly. Stretch a piece of bacon over each chicken breast.
3. Nestle the chicken breasts into the sauce and spoon a little sauce over the top. Divide the mozzarella over the chicken breasts and bake in the oven for 20 minutes, or until the chicken is cooked through.
4. When the chicken's almost ready, steam or boil the green beans for 3-4 minutes, then drain. Scatter the parsley over the chicken, then divide the chicken and sauce between 4 plates, and serve with the beans and baked potatoes.



JOIN ME:

WEDNESDAY'S

**Centre 70, Kinecroft, Wallingford,
OX10 0DT**

9:30am, 11am, 4pm, 5:30pm & 7pm

Call Nicola 07861 672320

Café Delorme

Fresh ground coffee and drinks

Doughnuts and pastries baked fresh daily

Takeaway menus with weekly specials Wed - Sat to order

Dining In from end June

Authentic French Bistro Evenings one Friday each month

f Book on Facebook or 01491 651088

Café Delorme, 2 The Pound, Cholsey OX10 9NS



EST. 1995

Mr & Mrs Park's

FAMILY BUTCHERS

High welfare local produce

Knowledgeable and friendly service

A great range of local cheese, wines and much much more.

Check out our website or follow us on Facebook or Instagram to learn more.

5 The Pound, Cholsey, Wallingford, Oxfordshire, OX10 9NS
01491 651300 • info@mrandmrsparks.co.uk • www.mrandmrsparks.co.uk

Avanti ITALIAN

RESTAURANT



Dining In
Takeaway
Delivery Service

Tuesday to Saturday

Order online
avantiitalian.com
or call 01491835500

COFFEE CULTURE

Where children can play and you can relax



GOOD COFFEE | SOFT PLAY AREA | GREAT FOOD

OPEN TUESDAY TO FRIDAY 9.30AM - 3PM

Royal Standard · 32 St Marys St · Wallingford OX10 0ET



Red Lion

Brightwell cum Sotwell

Corinne & Mouse Welcome you.
Pop in and Say Hello

The Street, Brightwell-cum-Sotwell, Oxfordshire OX10 0RT

01491 837 373

www.redlionbrightwell.co.uk

FB: RedLionBrightwellcumSotwell

GREAT FOOD, FINE LOCAL ALES AND A WARM WELCOME await at THE ROYAL STANDARD PUB, ALONG WITH SKY AND BT SPORTS SO YOU CAN FOLLOW ALL THE LATEST SPORTS ACTION

**PROBABLY THE BEST
SUNDAY ROAST IN TOWN!**

CALL 01491 599105
ROYALSTANDARDWALLINGFORD.CO.UK



**ROYAL
STANDARD**

WALLINGFORD'S ROYAL: ANYTHING BUT STANDARD!



**Welcoming Café specialising in
healthy Vegetarian & Vegan food**

facebook

Google
Reviews
4.8 ★★★★★

tripadvisor

Open Tuesday to Saturday
9:30-3:30

- Speciality Coffee
- Loose Leaf Teas
- Delicious Breakfasts
- Healthy Lunches
- Artisan Bread & Pastries
- Homemade Cakes
- Super Smoothies
- Amazing Ice Creams
- Milkshakes

53 St Mary's Street, Wallingford, OX10 0ER
www.ribizli.co.uk – 07926 870082



Shellfish Com
Restaurant & Bar

28 High Street
Wallingford

www.shellfishcom.co.uk

01491 832 807

wallingford@shellfishcom.co.uk

Wallingford Wine of the Month – M de Mangot Rosé

After a few false starts, summer is now in full swing, and that means barbecues, salads, al fresco dining, and most importantly: rosé! Rosé is a style of wine that has been experiencing a rapid and public evolution from the sweet crimson wines ubiquitous in the 1980s, through the increasingly fashionable dry and super-pale wines of Provence, to today, where rosé is made and drunk seriously across wide swathes of the world.

The easy thing to do would be to list the virtues of Provence, with its warm maritime climate, its long, dry, sunny summers, and its soil of limestone and clay that keeps vines just watered enough to produce excellent grapes ideal for making rosé. But we all know about Provence rosés: their dry, perfumed elegance are popular all year round. Instead, I'd like to focus on another wine from a more famous region, that is nevertheless much less known and equally worthy of our acclaim.

Bordeaux is a wonderful region for winemaking. It too has a moderate maritime climate, long summers and, in St-Émilion especially, sits on clay and limestone soils perfect for growing Merlot. Château Mangot is overseen by Yann and Karl Todeschnini, whose parents inherited and then reinvigorated the estate, securing its Grand Cru status in 1998. Advocates for biodiversity and organic viticulture way before it was cool, they have created a range of wines which show off the very best of the terroir of this renowned region. The M de Mangot rosé is a superb example. Produced by gently pressing red grapes at cool temperatures to release just a hint of the colour and aroma from the grape skins, while leaving the tannin and structure for the reds, they are deliberately making something as close to a white wine as the grapes allow.

This wine is possibly the most attractive bottle of Bordeaux we've ever seen – pale salmon pink, with its glass stopper and designer punt in the bottom, it can stand proudly alongside anything Provence can produce. But it's when you get into the bottle the magic really starts. This is certainly an elegant wine, but there's more power in the palate than a typical rosé shows. It's packed with dry berry character and an overlay of spring herbs gives a deliciously savoury mid-palate. The finish is long and moreish, leaving a lingering freshness that could easily last all afternoon.

If you're thinking pink, but want to explore the path slightly less trodden, this is a wonderful way to go. Pick up yours today, and mention **Window on Wallingford** for your exclusive price!



Michael Jelley is the Director of Grape Minds Wallingford

Wine Name: M de Mangot Rosé **Producer:** Château Mangot **Grapes:** Merlot **Region:** St-Émilion, Bordeaux
Exclusive Price: £16/bottle until the next issue **Mention WOW in store!**

CRAVING FOR SEAFOOD?

THE GEORGE

Tavern
BAR + KITCHEN

** SPECIAL PROMO **

**FRESH HALF SCOTTISH
LOBSTER & FRIES
ONLY £10**

RESERVATIONS 01491 836665

OPEN FOR FOOD DAILY

**THE GEORGE
HIGH STREET - WALLINGFORD - OX10 0BS**

Thinking of
selling your
Jewellery?

Mallams
1788



Mallams' specialist Louise Dennis FGA DGA, is available to give **free** confidential valuations on any piece(s) you are considering selling at auction.

Home Visits also available

Enquiries: 01865 241 358 or louise.dennis@mallams.co.uk
www.mallams.co.uk



Book your
**PERSONAL
TOUR**
Welcome!



Come and join us!

Discover what makes Cranford an extraordinary start to school life
Specialist teaching, excellent facilities and outstanding pastoral care.



CRANFORD HOUSE

Excellence in Independent Education
for Boys and Girls aged 3 - 18
www.cranfordhouse.net

HAVE TROUBLE WITH YOUR TREES?

NEED SOME HELP? ASK THE EXPERTS

- Tree removal
- Tree thinning
- Stump grinding
- Hedge trimming
- Tree pruning
- Tree felling
- Landscaping
- Fencing

We are city & guilds nptc qualified and insured
you can feel safe dealing with us.

Call now to see how we can help Free no obligation quote

1st CLASS TREE SURGEONS

E. quote@firstclasstreesurgeons.co.uk

T. 07889 881 525
firstclasstreesurgeons.co.uk

Shaun Guard

TV & WIFI SERVICES

- Aerials - supplied, repaired & poor reception solved
- Satellite - Sky Q dish upgrades, discreet dish installation also foreign TV
- Internet - blackspots cured, data cables to your TVs / computer
- TVs - hung on your wall or set up & tuned

 OXFORD AERIALS

Call Wallingford

01491 833282

www.oxfordaerials.co.uk

WEPS

WALLINGFORD ELECTRICAL & PLUMBING SUPPLIES

**OPEN TO THE
TRADE & PUBLIC**

 **01491 827825**

 **SALES@WEPS.ORG.UK**

UNIT 1 MOSES WINTER WAY



**KJ MOBILE
HAIR**

*Katie Drew
Cutting Technician*

Phone/Text 07730400595
Email: kjmobilehair86@googlemail.com

HAYNES

Car Care Centre

servicing...batteries...tyres...fantastic value

Bushells Business Park, Lester Way,
Wallingford Oxon OX10 9DD

www.haynes-car-care.co.uk

- All Makes Servicing and MOT's
- Parts & Accessories
- Air Con Re-Gas
- Courtesy Car
- Batteries & Tyres
- 4 Wheel Laser Tracking



Proud Sponsors of Wallingford Vehicle Rally & BunkFest

01491836097